

## Disclaimer

The following report(s) provides findings from an FDA-initiated query using its Mini-Sentinel pilot. While Mini-Sentinel queries may be undertaken to assess potential medical product safety risks, they may also be initiated for various other reasons. Some examples include determining a rate or count of an identified health outcome of interest, examining medical product use, exploring the feasibility of future, more detailed analyses within Mini-Sentinel, and seeking to better understand the capabilities of the Mini-Sentinel pilot.

Data obtained through Mini-Sentinel are intended to complement other types of evidence such as preclinical studies, clinical trials, post market studies, and adverse event reports, all of which are used by FDA to inform regulatory decisions regarding medical product safety. The information contained in this report is provided as part of FDA's commitment to place knowledge acquired from the Mini-Sentinel pilot in the public domain as soon as possible. Any public health actions taken by FDA regarding products involved in Mini-Sentinel queries will continue to be communicated through existing channels.

FDA wants to emphasize that the fact that FDA has initiated a query involving a medical product and is reporting findings related to that query does not mean that FDA is suggesting health care practitioners should change their prescribing practices for the medical product or that patients taking the medical product should stop using it. Patients who have questions about the use of an identified medical product should contact their health care practitioners.

The following report contains a description of the request, request specifications, and results from the modular program run(s).

If you are using a web page screen reader and are unable to access this document, please contact the Sentinel Operations Center for assistance at [info@sentinelssystem.org](mailto:info@sentinelssystem.org).

**Overview for Request MPR\_WP21\_v01**

|                                   |   |
|-----------------------------------|---|
| <b><u>Request ID</u></b>          | TO09y05_MPR_WP21_v01  |
| <b><u>Request Description</u></b> | This report investigated prevalence and incidence of promethazine use in the Mini-Sentinel Distributed Database (MSDD).   |
| <b><u>Data Source</u></b>         | Data from January 1, 2000 to May 31, 2013 from 18 Data Partners contributing to the Mini-Sentinel Distributed Database (MSDD) were included in this request. This request was distributed to all 18 Data Partners on March 4, 2014.   |
| <b><u>Study Design</u></b>        | This request was designed to investigate prevalence and incidence of promethazine use in the MSDD. Appendix A lists the generic names included in this request. The number of users, dispensings, days supplied, amount supplied, eligible members, member-years, and other counts were reported. Three scenarios were examined, which are described in Appendix B. |
| <b><u>Cohort Eligibility</u></b>  | Patients in the following age groups were included in the cohort: 0-5 months, 6-11 months, 12-23 months, 2-4 years, 5-9 years, 10-17 years, 18-44 years, 45-64 years, 65+ years.  |
| <b><u>Criteria</u></b>            |   |
| <b><u>Notes:</u></b>              | Please contact the Sentinel Operations Center Query Fulfillment Team ( <a href="mailto:qf@sentinelssystem.org">qf@sentinelssystem.org</a> ) for questions and to provide comments/suggestions for future enhancements to this document.   |

## Table of Contents

|                          |   |
|--------------------------|---|
| <b><u>Glossary</u></b>   | List of Terms and Definitions Found in this Report  |
| <b><u>Table 1a</u></b>   | Number of Prevalent Users, Dispensings, Days Supplied Amount Supplied, Eligible Members, Member-Years, Days Supplied per User, Dispensings per User, Days Supplied per Dispensing, and Number of Users per 1,000 Eligible Members by Drug Product from January 1, 2000 to May 31, 2013                      |
| <b><u>Table 1b</u></b>   | Number of Incident Users, Dispensings, Days Supplied Amount Supplied, Eligible Members, Member-Years, Days Supplied per User, Dispensings per User, Days Supplied per Dispensing, and Number of Users per 1,000 Eligible Members by Drug Product from January 1, 2000 to May 31, 2013                       |
| <b><u>Table 2a</u></b>   | Number of Prevalent Users, Dispensings, Days Supplied Amount Supplied, Eligible Members, Member-Years, Days Supplied per User, Dispensings per User, Days Supplied per Dispensing, and Number of Users per 1,000 Eligible Members by Drug Product and Age Group from January 1, 2000 to May 31, 2013        |
| <b><u>Table 2b</u></b>   | Number of Incident Users, Dispensings, Days Supplied Amount Supplied, Eligible Members, Member-Years, Days Supplied per User, Dispensings per User, Days Supplied per Dispensing, and Number of Users per 1,000 Eligible Members by Drug Product and Age Group from January 1, 2000 to May 31, 2013         |
| <b><u>Table 3a</u></b>   | Number of Prevalent Users, Dispensings, Days Supplied Amount Supplied, Eligible Members, Member-Years, Days Supplied per User, Dispensings per User, Days Supplied per Dispensing, and Number of Users per 1,000 Eligible Members by Drug Product and Sex from January 1, 2000 to May 31, 2013              |
| <b><u>Table 3b</u></b>   | Number of Incident Users, Dispensings, Days Supplied Amount Supplied, Eligible Members, Member-Years, Days Supplied per User, Dispensings per User, Days Supplied per Dispensing, and Number of Users per 1,000 Eligible Members by Drug Product and Sex from January 1, 2000 to May 31, 2013               |
| <b><u>Table 4a</u></b>   | Number of Prevalent Users, Dispensings, Days Supplied Amount Supplied, Eligible Members, Member-Years, Days Supplied per User, Dispensings per User, Days Supplied per Dispensing, and Number of Users per 1,000 Eligible Members by Drug Product and Year from January 1, 2000 to May 31, 2013             |
| <b><u>Table 4b</u></b>   | Number of Incident Users, Dispensings, Days Supplied Amount Supplied, Eligible Members, Member-Years, Days Supplied per User, Dispensings per User, Days Supplied per Dispensing, and Number of Users per 1,000 Eligible Members by Drug Product and Year from January 1, 2000 to May 31, 2013              |
| <b><u>Figure 1a</u></b>  | Prevalent Promethazine Use in the Mini-Sentinel Distributed Database (MSDD) between January 1, 2000 and May 31, 2013, by Drug Product and Year  |
| <b><u>Figure 1b</u></b>  | Incident Promethazine Use in the Mini-Sentinel Distributed Database (MSDD) between January 1, 2000 and May 31, 2013, by Drug Product and Year   |
| <b><u>Table 5a</u></b>   | Number of Prevalent Users, Dispensings, Days Supplied Amount Supplied, Eligible Members, Member-Years, Days Supplied per User, Dispensings per User, Days Supplied per Dispensing, and Number of Users per 1,000 Eligible Members by Drug Product, Age Group, and Year from January 1, 2000 to May 31, 2013 |
| <b><u>Table 5b</u></b>   | Number of Incident Users, Dispensings, Days Supplied Amount Supplied, Eligible Members, Member-Years, Days Supplied per User, Dispensings per User, Days Supplied per Dispensing, and Number of Users per 1,000 Eligible Members by Drug Product, Age Group, and Year from January 1, 2000 to May 31, 2013  |
| <b><u>Appendix A</u></b> | Generic Drugs Included in this Request  |
| <b><u>Appendix B</u></b> | Modular Program Specifications for Request MPR_WP21_v01   |
| <b><u>Appendix C</u></b> | Dates of Available Data for Each Data Partner up to Request Send Date (March 4, 2014)   |

### **List of Terms and Definitions Found in this Report**

**Amount Supplied** - number of units (pills, tablets, vials) dispensed. Net amount per NDC per dispensing. This is equivalent to the "RxAmt"

**Care Setting** - Contains the care settings considered for the individual diagnosis or procedure codes of interest. The following are valid entries:

IP: inpatient hospital stays; IS: non-acute institutional stays; ED: emergency department visits; AV: ambulatory visits; OA: other ambulatory

**Days Supplied** - Number of days supplied for all dispensings encountered by individuals in the prevalent or incident cohort. The number is reported by the pharmacist as the number of days that the medications supports, based on the number of doses. (To be included in the incident-based cohort, a member must have a dispensing that meets the criteria specified for incidence type and washout period. However, once a member is included in the incident cohort, all dispensings for that individual are counted as dispensings.)

**Dispensings** - Total number of dispensings for members included in the prevalent- or incident-based cohort. To be included in the incident-based cohort, a member must have a dispensing that meets the criteria specified for incidence type and washout period. However, once a member is included in the incident cohort, all dispensings for that individual are counted as dispensings.

**Eligible Members (incidence-based cohort)** - Number of members eligible for incident diagnosis (defined by the washout period) with drug and/or medical coverage during the query period.

**Eligible Members (prevalence-based cohort)** - Number of members with at least one day of drug and/or medical coverage during the query period.

**Enrollment Gap** - Number of days allowed between two consecutive enrollment periods without breaking a "continuously enrolled" sequence.

**Exposure** - NDC and/or procedure and/or diagnosis code values for the exposure(s) of interest.

**Incidence Type (incidence-based cohort)** - *Minimum incidence type* will only consider the first claim in the query period as long as it is the first claim in the user's entire available history. *Single incidence type* will consider the first claim in the query period that satisfies the washout period criteria. That is, incidence is defined as the first claim during the query period with no evidence of a prior claim during the previous washout period days. *Multiple incidence type* will use the washout period to establish incidence and consider all qualifying incident claims.

**"Incident with Respect to" Codes** - NDC and/or procedure and/or diagnosis codes to be used to refine the incident definition for the exposure(s) of interest. For example, if a requester is examining exposure to DRUG A but wants incidence of DRUG A to be defined with respect to DRUG A and DRUG B, the Incident with Respect to Code fields would include both DRUG A and DRUG B codes.

**Incident Only Care Setting** - Contains the care settings considered for the individual diagnosis or procedure codes included as "Incident with Respect to" codes.

**Member-Years (incidence-based cohort)** - Sum of all years of enrollment with drug and/or medical coverage in the query period preceded by a washout period.

**Member-Years (prevalence-based cohort)** - Sum of all years members are enrolled with drug and/or medical coverage during the query period.

**New Starts** - Number of incident dispensings during the query period. Patient must have no prior dispensings of interest in the washout period. For a single and minimum incidence type, an individual may have no more than one new start. For a multiple incidence type, an individual may have more than one new start.

**New Users** - Number of members with incident claims during the query period. Member must have no evidence of claims of interest (defined by incidence criteria) in the prior washout period. A patient may only be counted once in a query period.

**Query Period** - Period in which the modular program looks for diagnoses of interest.

**Washout Period (incidence-based cohort)** - Number of days a patient is required to have no evidence of prior claim of interest and continuous drug and/or medical coverage.

\*all terms may not be used in this report

**Table 1a. Number of Prevalent Users, Dispensings, Days Supplied, Amount Supplied, Eligible Members, Member-Years, Days Supplied per User, Dispensings per User, Days Supplied per Dispensing, and Number of Users per 1,000 Eligible Members by Drug Product to January 1, 2000 from May 31, 2013**

|   | Users     | Dispensings | Days Supplied | Amount Supplied | Eligible Members | Member-Years | Days Supplied per user | Dispensings per User | Days Supplied per Dispensing | Users per 1K Eligible Members |
|---|-----------|-------------|---------------|-----------------|------------------|--------------|------------------------|----------------------|------------------------------|-------------------------------|
| Promethazine (Liquid Only)                                  | 429,902   | 638,540     | 5,502,838     | 113,672,372     | 113,835,160      | 305,729,931  | 12.80                  | 1.49                 | 8.62                         | 3.78                          |
| Promethazine (Tablet Only)                                  | 4,205,903 | 9,031,834   | 75,857,255    | 293,177,122     | 113,835,160      | 305,729,931  | 18.04                  | 2.15                 | 8.40                         | 36.95                         |
| Promethazine/Codeine and Promethazine/Phenylephrine/Codeine | 3,140,637 | 4,952,083   | 54,193,791    | 945,124,772     | 113,835,160      | 305,729,931  | 17.26                  | 1.58                 | 10.94                        | 27.59                         |

**Table 1b. Number of Incident Users, Dispensings, Days Supplied, Amount Supplied, Eligible Members, Member-Years, Days Supplied per User, Dispensings per User, Days Supplied per Dispensing, and Number of Users per 1,000 Eligible Members by Drug Product from January 1, 2000 to May 31, 2013**

|   | New Users | Dispensings | Days Supplied | Amount Supplied | Eligible Members | Member-Years | Days Supplied per user | Dispensings per User | Days Supplied per Dispensing | New Users per 1K Eligible Members |
|---|-----------|-------------|---------------|-----------------|------------------|--------------|------------------------|----------------------|------------------------------|-----------------------------------|
| Promethazine (Liquid Only)                                  | 334,894   | 336,105     | 2,821,628     | 53,355,456      | 93,601,894       | 241,372,297  | 8.43                   | 1.00                 | 8.40                         | 3.58                              |
| Promethazine (Tablet Only)                                  | 3,284,369 | 3,291,329   | 18,406,770    | 78,732,179      | 93,601,894       | 236,227,123  | 5.60                   | 1.00                 | 5.59                         | 35.09                             |
| Promethazine/Codeine and Promethazine/Phenylephrine/Codeine | 2,473,343 | 2,474,098   | 27,301,836    | 453,770,928     | 93,601,894       | 236,013,817  | 11.04                  | 1.00                 | 11.04                        | 26.42                             |

**Table 2a. Number of Prevalent Users, Dispensings, Days Supplied, Amount Supplied, Eligible Members, Member-Years, Days Supplied per User, Dispensings per User, Days Supplied per Dispensing, and Number of Users per 1,000 Eligible Members by Drug Product and Age Group from January 1, 2000 to May 31, 2013**

|  | Users     | Dispensings | Days Supplied | Amount Supplied | Eligible Members | Member-Years | Days Supplied per user | Dispensings per User | Days Supplied per Dispensing | Users per 1K Eligible Members |
|--|-----------|-------------|---------------|-----------------|------------------|--------------|------------------------|----------------------|------------------------------|-------------------------------|
| <b>Promethazine (Liquid Only)</b>                                  |           |             |               |                 |                  |              |                        |                      |                              |                               |
| 0 to 5 Months  | 1,505     | 1,639       | 16,393        | 138,036         | 3,662,644        | 1,589,292    | 10.89                  | 1.09                 | 10.00                        | 0.41                          |
| 6 to 11 Months   | 5,231     | 5,833       | 57,516        | 563,990         | 3,587,212        | 1,697,810    | 11.00                  | 1.12                 | 9.86                         | 1.46                          |
| 12 to 23 Months  | 13,281    | 15,059      | 139,463       | 1,655,368       | 4,444,514        | 3,527,210    | 10.50                  | 1.13                 | 9.26                         | 2.99                          |
| 2 to 4 Years   | 71,668    | 87,302      | 659,038       | 9,644,989       | 7,402,184        | 11,291,676   | 9.20                   | 1.22                 | 7.55                         | 9.68                          |
| 5 to 9 Years   | 110,516   | 140,694     | 909,672       | 17,710,853      | 10,477,293       | 19,855,060   | 8.23                   | 1.27                 | 6.47                         | 10.55                         |
| 10 to 17 Years   | 50,519    | 62,778      | 423,552       | 9,936,528       | 15,005,187       | 33,943,372   | 8.38                   | 1.24                 | 6.75                         | 3.37                          |
| 18 to 44 Years   | 92,232    | 130,755     | 1,211,314     | 28,844,715      | 54,077,095       | 116,008,745  | 13.13                  | 1.42                 | 9.26                         | 1.71                          |
| 45 to 64 Years   | 75,782    | 129,225     | 1,326,203     | 30,800,572      | 31,931,924       | 86,087,673   | 17.50                  | 1.71                 | 10.26                        | 2.37                          |
| 65+ Years  | 35,228    | 65,255      | 759,687       | 14,377,321      | 9,737,147        | 31,273,211   | 21.56                  | 1.85                 | 11.64                        | 3.62                          |
| <b>Promethazine (Tablet Only)</b>                                  |           |             |               |                 |                  |              |                        |                      |                              |                               |
| 0 to 5 Months  | 115       | 117         | 433           | 1,305           | 3,662,644        | 1,589,292    | 3.77                   | 1.02                 | 3.70                         | 0.03                          |
| 6 to 11 Months   | 316       | 335         | 1,195         | 3,668           | 3,587,212        | 1,697,810    | 3.78                   | 1.06                 | 3.57                         | 0.09                          |
| 12 to 23 Months  | 1,036     | 1,186       | 4,341         | 11,424          | 4,444,514        | 3,527,210    | 4.19                   | 1.14                 | 3.66                         | 0.23                          |
| 2 to 4 Years   | 9,757     | 12,377      | 44,361        | 3,040,865       | 7,402,184        | 11,291,676   | 4.55                   | 1.27                 | 3.58                         | 1.32                          |
| 5 to 9 Years   | 56,321    | 75,758      | 343,969       | 11,753,681      | 10,477,293       | 19,855,060   | 6.11                   | 1.35                 | 4.54                         | 5.38                          |
| 10 to 17 Years   | 375,661   | 566,263     | 2,758,212     | 15,699,976      | 15,005,187       | 33,943,372   | 7.34                   | 1.51                 | 4.87                         | 25.04                         |
| 18 to 44 Years   | 2,219,155 | 4,406,446   | 31,744,244    | 124,396,474     | 54,077,095       | 116,008,745  | 14.30                  | 1.99                 | 7.20                         | 41.04                         |
| 45 to 64 Years   | 1,282,965 | 3,074,687   | 31,167,486    | 109,352,023     | 31,931,924       | 86,087,673   | 24.29                  | 2.40                 | 10.14                        | 40.18                         |
| 65+ Years  | 384,520   | 894,665     | 9,793,014     | 28,917,706      | 9,737,147        | 31,273,211   | 25.47                  | 2.33                 | 10.95                        | 39.49                         |
| <b>Promethazine/Codeine and Promethazine/Phenylephrine/Codeine</b> |           |             |               |                 |                  |              |                        |                      |                              |                               |
| 0 to 5 Months  | 268       | 286         | 6,558         | 39,202          | 3,662,644        | 1,589,292    | 24.47                  | 1.07                 | 22.93                        | 0.07                          |
| 6 to 11 Months   | 1,680     | 1,799       | 55,480        | 251,192         | 3,587,212        | 1,697,810    | 33.02                  | 1.07                 | 30.84                        | 0.47                          |
| 12 to 23 Months  | 8,875     | 9,941       | 304,328       | 1,415,645       | 4,444,514        | 3,527,210    | 34.29                  | 1.12                 | 30.61                        | 2.00                          |
| 2 to 4 Years   | 69,419    | 88,458      | 2,063,075     | 12,695,466      | 7,402,184        | 11,291,676   | 29.72                  | 1.27                 | 23.32                        | 9.38                          |
| 5 to 9 Years   | 125,365   | 161,212     | 2,889,368     | 25,005,396      | 10,477,293       | 19,855,060   | 23.05                  | 1.29                 | 17.92                        | 11.97                         |
| 10 to 17 Years   | 223,235   | 282,112     | 3,622,912     | 48,350,886      | 15,005,187       | 33,943,372   | 16.23                  | 1.26                 | 12.84                        | 14.88                         |
| 18 to 44 Years   | 1,367,453 | 1,897,675   | 19,002,539    | 355,818,661     | 54,077,095       | 116,008,745  | 13.90                  | 1.39                 | 10.01                        | 25.29                         |
| 45 to 64 Years   | 1,139,677 | 1,939,825   | 19,620,482    | 382,361,914     | 31,931,924       | 86,087,673   | 17.22                  | 1.70                 | 10.11                        | 35.69                         |
| 65+ Years  | 285,354   | 570,775     | 6,629,049     | 119,186,410     | 9,737,147        | 31,273,211   | 23.23                  | 2.00                 | 11.61                        | 29.31                         |

**Table 2b. Number of Incident Users, Dispensings, Days Supplied, Amount Supplied, Eligible Members, Member-Years, Days Supplied per User, Dispensings per User, Days Supplied per Dispensing, and Number of Users per 1,000 Eligible Members by Drug Product and Age Group from January 1, 2000 to May 31, 2013**

|  | New Users | Dispensings | Days Supplied | Amount Supplied | Eligible Members | Member-Years | Days Supplied per user | Dispensings per User | Days Supplied per Dispensing | 1K Eligible Members |
|--|-----------|-------------|---------------|-----------------|------------------|--------------|------------------------|----------------------|------------------------------|---------------------|
| <b>Promethazine (Liquid Only)</b>                                  |           |             |               |                 |                  |              |                        |                      |                              |                     |
| 0 to 5 Months  | 16        | 16          | 96            | 1,253           | 531,171          | 1,840        | 6.00                   | 1.00                 | 6.00                         | 0.03                |
| 6 to 11 Months   | 4,093     | 4,146       | 39,135        | 395,640         | 2,780,844        | 1,255,937    | 9.56                   | 1.01                 | 9.44                         | 1.47                |
| 12 to 23 Months  | 10,182    | 10,263      | 94,680        | 1,128,880       | 3,538,569        | 2,745,433    | 9.30                   | 1.01                 | 9.23                         | 2.88                |
| 2 to 4 Years   | 56,233    | 56,541      | 420,261       | 6,127,621       | 6,000,192        | 8,903,735    | 7.47                   | 1.01                 | 7.43                         | 9.37                |
| 5 to 9 Years   | 81,375    | 81,789      | 518,813       | 10,100,736      | 8,577,752        | 15,690,255   | 6.38                   | 1.01                 | 6.34                         | 9.49                |
| 10 to 17 Years   | 35,344    | 35,485      | 236,169       | 5,440,048       | 12,438,283       | 27,248,480   | 6.68                   | 1.00                 | 6.66                         | 2.84                |
| 18 to 44 Years   | 64,080    | 64,205      | 606,610       | 12,837,059      | 43,096,298       | 87,858,484   | 9.47                   | 1.00                 | 9.45                         | 1.49                |
| 45 to 64 Years   | 56,293    | 56,352      | 584,529       | 11,643,879      | 27,160,322       | 70,507,443   | 10.38                  | 1.00                 | 10.37                        | 2.07                |
| 65+ Years  | 27,278    | 27,308      | 321,335       | 5,680,340       | 8,671,238        | 26,833,623   | 11.78                  | 1.00                 | 11.77                        | 3.15                |
| <b>Promethazine (Tablet Only)</b>                                  |           |             |               |                 |                  |              |                        |                      |                              |                     |
| 0 to 5 Months  | 6         | 6           | 22            | 71              | 531,171          | 1,840        | 3.67                   | 1.00                 | 3.67                         | 0.01                |
| 6 to 11 Months   | 274       | 275         | 980           | 2,992           | 2,780,844        | 1,255,937    | 3.58                   | 1.00                 | 3.56                         | 0.10                |
| 12 to 23 Months  | 873       | 884         | 3,232         | 8,070           | 3,540,787        | 2,748,314    | 3.70                   | 1.01                 | 3.66                         | 0.25                |
| 2 to 4 Years   | 8,300     | 8,404       | 29,701        | 1,715,039       | 6,009,594        | 8,963,867    | 3.58                   | 1.01                 | 3.53                         | 1.38                |
| 5 to 9 Years   | 45,332    | 45,754      | 197,083       | 3,358,754       | 8,620,658        | 15,882,301   | 4.35                   | 1.01                 | 4.31                         | 5.26                |
| 10 to 17 Years   | 301,647   | 302,872     | 1,348,909     | 8,001,654       | 12,471,673       | 27,067,435   | 4.47                   | 1.00                 | 4.45                         | 24.19               |
| 18 to 44 Years   | 1,624,315 | 1,627,672   | 8,637,516     | 35,473,893      | 42,956,479       | 85,118,175   | 5.32                   | 1.00                 | 5.31                         | 37.81               |
| 45 to 64 Years   | 998,277   | 999,518     | 6,072,090     | 22,817,271      | 27,018,951       | 68,652,665   | 6.08                   | 1.00                 | 6.08                         | 36.95               |
| 65+ Years  | 305,345   | 305,944     | 2,117,237     | 7,354,435       | 8,609,311        | 26,208,878   | 6.93                   | 1.00                 | 6.92                         | 35.47               |
| <b>Promethazine/Codeine and Promethazine/Phenylephrine/Codeine</b> |           |             |               |                 |                  |              |                        |                      |                              |                     |
| 0 to 5 Months  | 7         | 7           | 87            | 1,260           | 531,171          | 1,840        | 12.43                  | 1.00                 | 12.43                        | 0.01                |
| 6 to 11 Months   | 1,162     | 1,168       | 32,872        | 161,997         | 2,780,844        | 1,255,936    | 28.29                  | 1.01                 | 28.14                        | 0.42                |
| 12 to 23 Months  | 6,473     | 6,487       | 194,758       | 923,531         | 3,540,303        | 2,747,561    | 30.09                  | 1.00                 | 30.02                        | 1.83                |
| 2 to 4 Years   | 50,696    | 50,748      | 1,174,403     | 7,152,459       | 6,005,275        | 8,924,359    | 23.17                  | 1.00                 | 23.14                        | 8.44                |
| 5 to 9 Years   | 90,172    | 90,260      | 1,597,252     | 13,687,472      | 8,585,079        | 15,684,573   | 17.71                  | 1.00                 | 17.70                        | 10.50               |
| 10 to 17 Years   | 170,928   | 171,019     | 2,201,802     | 28,827,318      | 12,424,785       | 26,971,459   | 12.88                  | 1.00                 | 12.87                        | 13.76               |
| 18 to 44 Years   | 1,019,207 | 1,019,509   | 10,300,697    | 187,179,132     | 43,026,128       | 85,972,802   | 10.11                  | 1.00                 | 10.10                        | 23.69               |
| 45 to 64 Years   | 902,290   | 902,453     | 9,157,809     | 170,161,947     | 27,013,327       | 68,229,014   | 10.15                  | 1.00                 | 10.15                        | 33.40               |
| 65+ Years  | 232,408   | 232,447     | 2,642,156     | 45,675,812      | 8,580,377        | 25,900,271   | 11.37                  | 1.00                 | 11.37                        | 27.09               |



**Table 3a. Number of Prevalent Users, Dispensings, Days Supplied, Amount Supplied, Eligible Members, Member-Years, Days Supplied per User, Dispensings per User, Days Supplied per Dispensing, and Number of Users per 1,000 Eligible Members by Drug Product and Sex from January 1, 2000 to May 31, 2013**

|  | Users     | Dispensings | Days Supplied | Amount Supplied | Eligible Members | Member-Years | Days Supplied per user | Dispensings per User | Days Supplied per Dispensing | Users per 1K Eligible Members |
|--|-----------|-------------|---------------|-----------------|------------------|--------------|------------------------|----------------------|------------------------------|-------------------------------|
| <b><i>Promethazine (Liquid Only)</i></b>                           |           |             |               |                 |                  |              |                        |                      |                              |                               |
| Female   | 251,500   | 381,784     | 3,365,219     | 70,793,047      | 57,627,906       | 157,581,830  | 13.38                  | 1.52                 | 8.81                         | 4.36                          |
| Male   | 178,357   | 256,702     | 2,137,240     | 42,869,744      | 56,171,047       | 148,087,657  | 11.98                  | 1.44                 | 8.33                         | 3.18                          |
| Unknown  | 45        | 54          | 379           | 9,581           | 36,207           | 60,444       | 8.42                   | 1.20                 | 7.02                         | 1.24                          |
| <b><i>Promethazine (Tablet Only)</i></b>                           |           |             |               |                 |                  |              |                        |                      |                              |                               |
| Female   | 2,931,160 | 6,829,990   | 58,311,802    | 221,553,960     | 57,627,906       | 157,581,830  | 19.89                  | 2.33                 | 8.54                         | 50.86                         |
| Male   | 1,273,776 | 2,200,247   | 17,532,837    | 71,577,297      | 56,171,047       | 148,087,657  | 13.76                  | 1.73                 | 7.97                         | 22.68                         |
| Unknown  | 967       | 1,597       | 12,616        | 45,865          | 36,207           | 60,444       | 13.05                  | 1.65                 | 7.90                         | 26.71                         |
| <b>Promethazine/Codeine and Promethazine/Phenylephrine/Codeine</b> |           |             |               |                 |                  |              |                        |                      |                              |                               |
| Female   | 1,875,622 | 3,031,835   | 32,924,521    | 579,313,437     | 57,627,906       | 157,581,830  | 17.55                  | 1.62                 | 10.86                        | 32.55                         |
| Male   | 1,264,528 | 1,919,576   | 21,263,147    | 365,692,344     | 56,171,047       | 148,087,657  | 16.82                  | 1.52                 | 11.08                        | 22.51                         |
| Unknown  | 487       | 672         | 6,123         | 118,991         | 36,207           | 60,444       | 12.57                  | 1.38                 | 9.11                         | 13.45                         |

**Table 3b. Number of Incident Users, Dispensings, Days, Supplied Amount Supplied, Eligible Members, Member-Years, Days Supplied per User, Dispensings per User, Days Supplied per Dispensing, and Number of Users per 1,000 Eligible Members by Drug Product and Sex from January 1, 2000 to May 31, 2013**

|  | New Users | Dispensings | Days Supplied | Amount Supplied | Eligible Members | Member-Years | Days Supplied per user | Dispensings per User | Days Supplied per Dispensing | New Users per 1K Eligible Members |
|--|-----------|-------------|---------------|-----------------|------------------|--------------|------------------------|----------------------|------------------------------|-----------------------------------|
| <b><i>Promethazine (Liquid Only)</i></b>                           |           |             |               |                 |                  |              |                        |                      |                              |                                   |
| Female   | 193,407   | 194,054     | 1,672,494     | 31,868,914      | 47,600,430       | 124,050,694  | 8.65                   | 1.00                 | 8.62                         | 4.06                              |
| Male   | 141,453   | 142,017     | 1,148,908     | 21,480,974      | 45,980,560       | 117,278,810  | 8.12                   | 1.00                 | 8.09                         | 3.08                              |
| Unknown  | 34        | 34          | 226           | 5,568           | 20,904           | 42,793       | 6.65                   | 1.00                 | 6.65                         | 1.63                              |
| <b><i>Promethazine (Tablet Only)</i></b>                           |           |             |               |                 |                  |              |                        |                      |                              |                                   |
| Female   | 2,276,606 | 2,281,682   | 13,023,763    | 53,000,034      | 47,600,430       | 120,321,492  | 5.72                   | 1.00                 | 5.71                         | 47.83                             |
| Male   | 1,007,022 | 1,008,905   | 5,378,997     | 25,716,263      | 45,980,560       | 115,864,161  | 5.34                   | 1.00                 | 5.33                         | 21.90                             |
| Unknown  | 741       | 742         | 4,010         | 15,882          | 20,904           | 41,470       | 5.41                   | 1.00                 | 5.40                         | 35.45                             |
| <b>Promethazine/Codeine and Promethazine/Phenylephrine/Codeine</b> |           |             |               |                 |                  |              |                        |                      |                              |                                   |
| Female   | 1,471,003 | 1,471,472   | 16,103,255    | 269,449,556     | 47,600,430       | 120,846,082  | 10.95                  | 1.00                 | 10.94                        | 30.90                             |
| Male   | 1,001,967 | 1,002,253   | 11,195,001    | 184,256,528     | 45,980,560       | 115,125,678  | 11.17                  | 1.00                 | 11.17                        | 21.79                             |
| Unknown  | 373       | 373         | 3,580         | 64,844          | 20,904           | 42,058       | 9.60                   | 1.00                 | 9.60                         | 17.84                             |

**Table 4a. Number of Prevalent Users, Dispensings, Days Supplied, Amount Supplied, Eligible Members, Member-Years, Days Supplied per User, Dispensings per User, Days Supplied per Dispensing, and Number of Users per 1,000 Eligible Members by Drug Product and Year from January 1, 2000 to May 31, 2013**

|  | Users   | Dispensings | Days Supplied | Amount Supplied | Eligible Members | Member-Years | Days Supplied per user | Dispensings per User | Days Supplied per Dispensing | Users per 1K Eligible Members |
|--|---------|-------------|---------------|-----------------|------------------|--------------|------------------------|----------------------|------------------------------|-------------------------------|
| <b><i>Promethazine (Liquid Only)</i></b> |         |             |               |                 |                  |              |                        |                      |                              |                               |
| 2000                                     | 29,179  | 39,661      | 405,749       | 6,167,678       | 8,716,758        | 7,435,296    | 13.91                  | 1.36                 | 10.23                        | 3.35                          |
| 2001                                     | 31,267  | 42,127      | 486,953       | 6,545,811       | 8,584,003        | 7,427,847    | 15.57                  | 1.35                 | 11.56                        | 3.64                          |
| 2002                                     | 29,082  | 38,366      | 450,478       | 6,313,593       | 8,674,100        | 7,523,475    | 15.49                  | 1.32                 | 11.74                        | 3.35                          |
| 2003                                     | 29,494  | 39,120      | 429,879       | 6,649,210       | 8,566,884        | 7,418,453    | 14.58                  | 1.33                 | 10.99                        | 3.44                          |
| 2004                                     | 17,852  | 23,276      | 207,332       | 5,327,654       | 9,292,592        | 7,970,052    | 11.61                  | 1.30                 | 8.91                         | 1.92                          |
| 2005                                     | 23,951  | 30,674      | 225,138       | 5,516,757       | 9,614,097        | 8,207,440    | 9.40                   | 1.28                 | 7.34                         | 2.49                          |
| 2006                                     | 33,132  | 39,145      | 297,877       | 7,183,251       | 23,539,707       | 19,335,404   | 8.99                   | 1.18                 | 7.61                         | 1.41                          |
| 2007                                     | 34,686  | 41,072      | 304,574       | 7,476,601       | 26,924,933       | 21,175,128   | 8.78                   | 1.18                 | 7.42                         | 1.29                          |
| 2008                                     | 64,827  | 76,820      | 580,250       | 13,889,947      | 54,046,721       | 43,343,517   | 8.95                   | 1.19                 | 7.55                         | 1.20                          |
| 2009                                     | 62,510  | 73,567      | 573,728       | 13,312,010      | 52,331,527       | 42,651,435   | 9.18                   | 1.18                 | 7.80                         | 1.19                          |
| 2010                                     | 53,902  | 64,183      | 499,898       | 11,613,035      | 50,469,209       | 41,193,439   | 9.27                   | 1.19                 | 7.79                         | 1.07                          |
| 2011                                     | 51,697  | 61,939      | 489,036       | 11,096,826      | 49,154,476       | 40,405,351   | 9.46                   | 1.20                 | 7.90                         | 1.05                          |
| 2012                                     | 43,986  | 52,458      | 413,353       | 9,491,377       | 47,918,338       | 38,913,017   | 9.40                   | 1.19                 | 7.88                         | 0.92                          |
| 2013                                     | 14,436  | 16,132      | 138,593       | 3,088,622       | 39,105,374       | 12,730,077   | 9.60                   | 1.12                 | 8.59                         | 0.37                          |
| <b><i>Promethazine (Tablet Only)</i></b> |         |             |               |                 |                  |              |                        |                      |                              |                               |
| 2000                                     | 132,325 | 270,958     | 2,206,188     | 7,335,362       | 8,716,758        | 7,435,296    | 16.67                  | 2.05                 | 8.14                         | 15.18                         |
| 2001                                     | 149,213 | 312,383     | 2,622,198     | 8,452,049       | 8,584,003        | 7,427,847    | 17.57                  | 2.09                 | 8.39                         | 17.38                         |
| 2002                                     | 168,897 | 353,861     | 3,078,113     | 9,769,295       | 8,674,100        | 7,523,475    | 18.22                  | 2.10                 | 8.70                         | 19.47                         |
| 2003                                     | 179,054 | 380,392     | 3,428,211     | 10,855,515      | 8,566,884        | 7,418,453    | 19.15                  | 2.12                 | 9.01                         | 20.90                         |
| 2004                                     | 154,437 | 322,047     | 3,486,855     | 17,913,067      | 9,292,592        | 7,970,052    | 22.58                  | 2.09                 | 10.83                        | 16.62                         |
| 2005                                     | 205,161 | 404,883     | 3,721,151     | 11,941,519      | 9,614,097        | 8,207,440    | 18.14                  | 1.97                 | 9.19                         | 21.34                         |
| 2006                                     | 357,476 | 538,017     | 4,476,822     | 15,988,381      | 23,539,707       | 19,335,404   | 12.52                  | 1.51                 | 8.32                         | 15.19                         |
| 2007                                     | 411,102 | 627,474     | 5,112,123     | 37,659,445      | 26,924,933       | 21,175,128   | 12.44                  | 1.53                 | 8.15                         | 15.27                         |
| 2008                                     | 814,088 | 1,202,458   | 9,444,620     | 39,293,196      | 54,046,721       | 43,343,517   | 11.60                  | 1.48                 | 7.85                         | 15.06                         |
| 2009                                     | 814,787 | 1,209,371   | 9,723,506     | 34,138,806      | 52,331,527       | 42,651,435   | 11.93                  | 1.48                 | 8.04                         | 15.57                         |
| 2010                                     | 770,052 | 1,158,460   | 9,560,244     | 33,497,321      | 50,469,209       | 41,193,439   | 12.42                  | 1.50                 | 8.25                         | 15.26                         |
| 2011                                     | 714,411 | 1,092,458   | 9,282,627     | 32,437,410      | 49,154,476       | 40,405,351   | 12.99                  | 1.53                 | 8.50                         | 14.53                         |
| 2012                                     | 607,847 | 909,487     | 7,604,835     | 26,505,041      | 47,918,338       | 38,913,017   | 12.51                  | 1.50                 | 8.36                         | 12.69                         |
| 2013                                     | 197,179 | 249,585     | 2,109,762     | 7,390,715       | 39,105,374       | 12,730,077   | 10.70                  | 1.27                 | 8.45                         | 5.04                          |

**Table 4a. Number of Prevalent Users, Dispensings, Days Supplied, Amount Supplied, Eligible Members, Member-Years, Days Supplied per User, Dispensings per User, Days Supplied per Dispensing, and Number of Users per 1,000 Eligible Members by Drug Product and Year from January 1, 2000 to May 31, 2013**

|  | Users   | Dispensings | Days Supplied | Amount Supplied | Eligible Members | Member-Years | Days Supplied per user | Dispensings per User | Days Supplied per Dispensing | Users per 1K Eligible Members |
|--|---------|-------------|---------------|-----------------|------------------|--------------|------------------------|----------------------|------------------------------|-------------------------------|
| <b>Promethazine/Codeine and Promethazine/Phenylephrine/Codeine</b> |         |             |               |                 |                  |              |                        |                      |                              |                               |
| 2000   | 137,246 | 176,572     | 3,944,849     | 35,971,464      | 8,716,758        | 7,435,296    | 28.74                  | 1.29                 | 22.34                        | 15.75                         |
| 2001   | 144,548 | 185,272     | 3,911,510     | 37,988,155      | 8,584,003        | 7,427,847    | 27.06                  | 1.28                 | 21.11                        | 16.84                         |
| 2002   | 140,222 | 180,276     | 3,710,138     | 37,249,355      | 8,674,100        | 7,523,475    | 26.46                  | 1.29                 | 20.58                        | 16.17                         |
| 2003   | 156,898 | 200,839     | 3,824,302     | 41,846,316      | 8,566,884        | 7,418,453    | 24.37                  | 1.28                 | 19.04                        | 18.31                         |
| 2004   | 136,290 | 176,891     | 1,958,359     | 37,115,885      | 9,292,592        | 7,970,052    | 14.37                  | 1.30                 | 11.07                        | 14.67                         |
| 2005   | 169,119 | 216,395     | 2,332,402     | 45,923,252      | 9,614,097        | 8,207,440    | 13.79                  | 1.28                 | 10.78                        | 17.59                         |
| 2006   | 270,746 | 340,234     | 3,322,347     | 69,363,032      | 23,539,707       | 19,335,404   | 12.27                  | 1.26                 | 9.76                         | 11.50                         |
| 2007   | 224,507 | 280,339     | 2,591,912     | 55,348,855      | 26,924,933       | 21,175,128   | 11.54                  | 1.25                 | 9.25                         | 8.34                          |
| 2008   | 568,930 | 699,818     | 6,168,526     | 130,057,220     | 54,046,721       | 43,343,517   | 10.84                  | 1.23                 | 8.81                         | 10.53                         |
| 2009   | 583,929 | 723,007     | 6,381,690     | 133,451,063     | 52,331,527       | 42,651,435   | 10.93                  | 1.24                 | 8.83                         | 11.16                         |
| 2010   | 448,107 | 557,013     | 5,004,879     | 102,243,290     | 50,469,209       | 41,193,439   | 11.17                  | 1.24                 | 8.99                         | 8.88                          |
| 2011   | 434,602 | 536,320     | 4,868,213     | 97,137,373      | 49,154,476       | 40,405,351   | 11.20                  | 1.23                 | 9.08                         | 8.84                          |
| 2012   | 370,165 | 454,376     | 4,144,486     | 81,462,485      | 47,918,338       | 38,913,017   | 11.20                  | 1.23                 | 9.12                         | 7.72                          |
| 2013   | 198,590 | 224,731     | 2,030,178     | 39,967,027      | 39,105,374       | 12,730,077   | 10.22                  | 1.13                 | 9.03                         | 5.08                          |

**Table 4b. Number of Incident Users, Dispensings, Days Supplied, Amount Supplied, Eligible Members, Member-Years, Days Supplied per User, Dispensings per User, Days Supplied per Dispensing, and Number of New Users per 1,000 Eligible Members by Drug Product and Year from January 1, 2000 to May 31, 2013**

|  | New Users | Dispensings | Days Supplied | Amount Supplied | Eligible Members | Member-Years | Days Supplied per user | Dispensings per User | Days Supplied per Dispensing | 1K Eligible Members |
|--|-----------|-------------|---------------|-----------------|------------------|--------------|------------------------|----------------------|------------------------------|---------------------|
| <b><i>Promethazine (Liquid Only)</i></b> |           |             |               |                 |                  |              |                        |                      |                              |                     |
| 2000                                     | 11,096    | 11,134      | 135,950       | 1,631,161       | 7,246,171        | 3,308,220    | 12.25                  | 1.00                 | 12.21                        | 1.53                |
| 2001                                     | 23,929    | 24,041      | 295,942       | 3,510,101       | 7,815,175        | 6,502,403    | 12.37                  | 1.00                 | 12.31                        | 3.06                |
| 2002                                     | 20,147    | 20,322      | 255,470       | 3,077,677       | 7,937,383        | 6,576,749    | 12.68                  | 1.01                 | 12.57                        | 2.54                |
| 2003                                     | 19,013    | 19,099      | 222,181       | 2,908,889       | 7,862,772        | 6,506,049    | 11.69                  | 1.00                 | 11.63                        | 2.42                |
| 2004                                     | 10,964    | 11,234      | 90,466        | 2,245,841       | 8,409,975        | 6,725,345    | 8.25                   | 1.02                 | 8.05                         | 1.30                |
| 2005                                     | 14,872    | 15,089      | 101,967       | 2,371,931       | 8,661,671        | 7,057,175    | 6.86                   | 1.01                 | 6.76                         | 1.72                |
| 2006                                     | 17,940    | 18,055      | 124,588       | 2,912,019       | 19,568,855       | 11,813,806   | 6.94                   | 1.01                 | 6.90                         | 0.92                |
| 2007                                     | 23,592    | 23,661      | 165,553       | 3,878,670       | 23,360,021       | 16,881,630   | 7.02                   | 1.00                 | 7.00                         | 1.01                |
| 2008                                     | 36,359    | 36,459      | 260,992       | 5,928,179       | 44,589,345       | 27,911,568   | 7.18                   | 1.00                 | 7.16                         | 0.82                |
| 2009                                     | 44,694    | 44,714      | 333,344       | 7,276,592       | 46,447,572       | 35,839,820   | 7.46                   | 1.00                 | 7.46                         | 0.96                |
| 2010                                     | 37,571    | 37,574      | 276,881       | 5,901,673       | 44,659,737       | 34,633,666   | 7.37                   | 1.00                 | 7.37                         | 0.84                |
| 2011                                     | 35,572    | 35,577      | 264,498       | 5,575,212       | 43,503,580       | 34,108,219   | 7.44                   | 1.00                 | 7.43                         | 0.82                |
| 2012                                     | 30,031    | 30,032      | 220,293       | 4,623,578       | 42,422,062       | 33,015,457   | 7.34                   | 1.00                 | 7.34                         | 0.71                |
| 2013                                     | 9,114     | 9,114       | 73,503        | 1,513,933       | 32,508,435       | 10,492,190   | 8.06                   | 1.00                 | 8.06                         | 0.28                |
| <b><i>Promethazine (Tablet Only)</i></b> |           |             |               |                 |                  |              |                        |                      |                              |                     |
| 2000                                     | 52,227    | 52,370      | 291,988       | 1,050,590       | 7,246,171        | 3,308,220    | 5.59                   | 1.00                 | 5.58                         | 7.21                |
| 2001                                     | 107,785   | 109,492     | 608,197       | 2,132,276       | 7,779,812        | 6,473,378    | 5.64                   | 1.02                 | 5.55                         | 13.85               |
| 2002                                     | 104,505   | 104,960     | 598,375       | 2,055,455       | 7,832,237        | 6,495,126    | 5.73                   | 1.00                 | 5.70                         | 13.34               |
| 2003                                     | 97,237    | 97,692      | 564,642       | 1,935,564       | 7,700,511        | 6,381,602    | 5.81                   | 1.00                 | 5.78                         | 12.63               |
| 2004                                     | 77,469    | 78,293      | 539,154       | 2,637,486       | 8,189,303        | 6,551,334    | 6.96                   | 1.01                 | 6.89                         | 9.46                |
| 2005                                     | 102,861   | 103,853     | 631,974       | 2,213,185       | 8,411,189        | 6,866,783    | 6.14                   | 1.01                 | 6.09                         | 12.23               |
| 2006                                     | 166,986   | 167,694     | 1,022,222     | 3,831,736       | 19,336,252       | 11,630,078   | 6.12                   | 1.00                 | 6.10                         | 8.64                |
| 2007                                     | 246,183   | 247,009     | 1,398,822     | 12,755,178      | 23,030,052       | 16,609,668   | 5.68                   | 1.00                 | 5.66                         | 10.69               |
| 2008                                     | 423,581   | 423,931     | 2,319,447     | 10,718,111      | 44,111,426       | 27,518,769   | 5.48                   | 1.00                 | 5.47                         | 9.60                |
| 2009                                     | 544,463   | 544,611     | 3,005,881     | 11,177,132      | 45,735,610       | 35,260,141   | 5.52                   | 1.00                 | 5.52                         | 11.90               |
| 2010                                     | 482,889   | 483,001     | 2,620,965     | 9,913,403       | 43,691,311       | 33,839,854   | 5.43                   | 1.00                 | 5.43                         | 11.05               |
| 2011                                     | 427,039   | 427,158     | 2,329,958     | 8,899,484       | 42,351,319       | 33,156,247   | 5.46                   | 1.00                 | 5.45                         | 10.08               |
| 2012                                     | 349,475   | 349,577     | 1,913,393     | 7,272,805       | 41,170,074       | 31,970,749   | 5.48                   | 1.00                 | 5.47                         | 8.49                |
| 2013                                     | 101,669   | 101,688     | 561,752       | 2,139,774       | 31,473,648       | 10,165,175   | 5.53                   | 1.00                 | 5.52                         | 3.23                |

**Table 4b. Number of Incident Users, Dispensings, Days Supplied, Amount Supplied, Eligible Members, Member-Years, Days Supplied per User, Dispensings per User, Days Supplied per Dispensing, and Number of New Users per 1,000 Eligible Members by Drug Product and Year from January 1, 2000 to May 31, 2013**

|  | New Users | Dispensings | Days Supplied | Amount Supplied | Eligible Members | Member-Years | Days Supplied per user | Dispensings per User | Days Supplied per Dispensing | 1K Eligible Members |
|--|-----------|-------------|---------------|-----------------|------------------|--------------|------------------------|----------------------|------------------------------|---------------------|
| <b>Promethazine/Codeine and Promethazine/Phenylephrine/Codeine</b> |           |             |               |                 |                  |              |                        |                      |                              |                     |
| 2000   | 55,868    | 55,897      | 1,234,937     | 11,267,904      | 7,246,171        | 3,308,220    | 22.10                  | 1.00                 | 22.09                        | 7.71                |
| 2001   | 117,968   | 118,000     | 2,543,551     | 23,699,307      | 7,774,689        | 6,462,573    | 21.56                  | 1.00                 | 21.56                        | 15.17               |
| 2002   | 101,144   | 101,214     | 2,141,850     | 20,287,107      | 7,813,810        | 6,465,108    | 21.18                  | 1.00                 | 21.16                        | 12.94               |
| 2003   | 107,092   | 107,140     | 2,097,399     | 21,668,730      | 7,674,167        | 6,336,604    | 19.59                  | 1.00                 | 19.58                        | 13.95               |
| 2004   | 82,373    | 82,437      | 944,116       | 16,648,555      | 8,157,578        | 6,503,699    | 11.46                  | 1.00                 | 11.45                        | 10.10               |
| 2005   | 103,719   | 103,809     | 1,135,614     | 21,019,311      | 8,362,026        | 6,789,541    | 10.95                  | 1.00                 | 10.94                        | 12.40               |
| 2006   | 128,208   | 128,295     | 1,284,994     | 25,413,465      | 19,205,517       | 11,493,810   | 10.02                  | 1.00                 | 10.02                        | 6.68                |
| 2007   | 145,963   | 146,025     | 1,345,339     | 27,210,110      | 22,924,439       | 16,488,662   | 9.22                   | 1.00                 | 9.21                         | 6.37                |
| 2008   | 284,292   | 284,392     | 2,501,431     | 51,356,353      | 44,082,832       | 27,443,425   | 8.80                   | 1.00                 | 8.80                         | 6.45                |
| 2009   | 420,707   | 420,797     | 3,711,797     | 74,566,594      | 45,788,411       | 35,246,689   | 8.82                   | 1.00                 | 8.82                         | 9.19                |
| 2010   | 296,090   | 296,125     | 2,657,133     | 51,983,612      | 43,784,675       | 33,879,176   | 8.97                   | 1.00                 | 8.97                         | 6.76                |
| 2011   | 280,401   | 280,420     | 2,540,179     | 48,707,269      | 42,547,606       | 33,265,066   | 9.06                   | 1.00                 | 9.06                         | 6.59                |
| 2012   | 233,819   | 233,840     | 2,118,418     | 40,042,303      | 41,415,869       | 32,133,762   | 9.06                   | 1.00                 | 9.06                         | 5.65                |
| 2013   | 115,699   | 115,707     | 1,045,078     | 19,900,308      | 31,525,915       | 10,197,482   | 9.03                   | 1.00                 | 9.03                         | 3.67                |

Figure 1a. Prevalent Promethazine Use in the Mini-Sentinel Distributed Database (MSDD) between January 1, 2000 and May 31, 2013, by Drug Product and Year

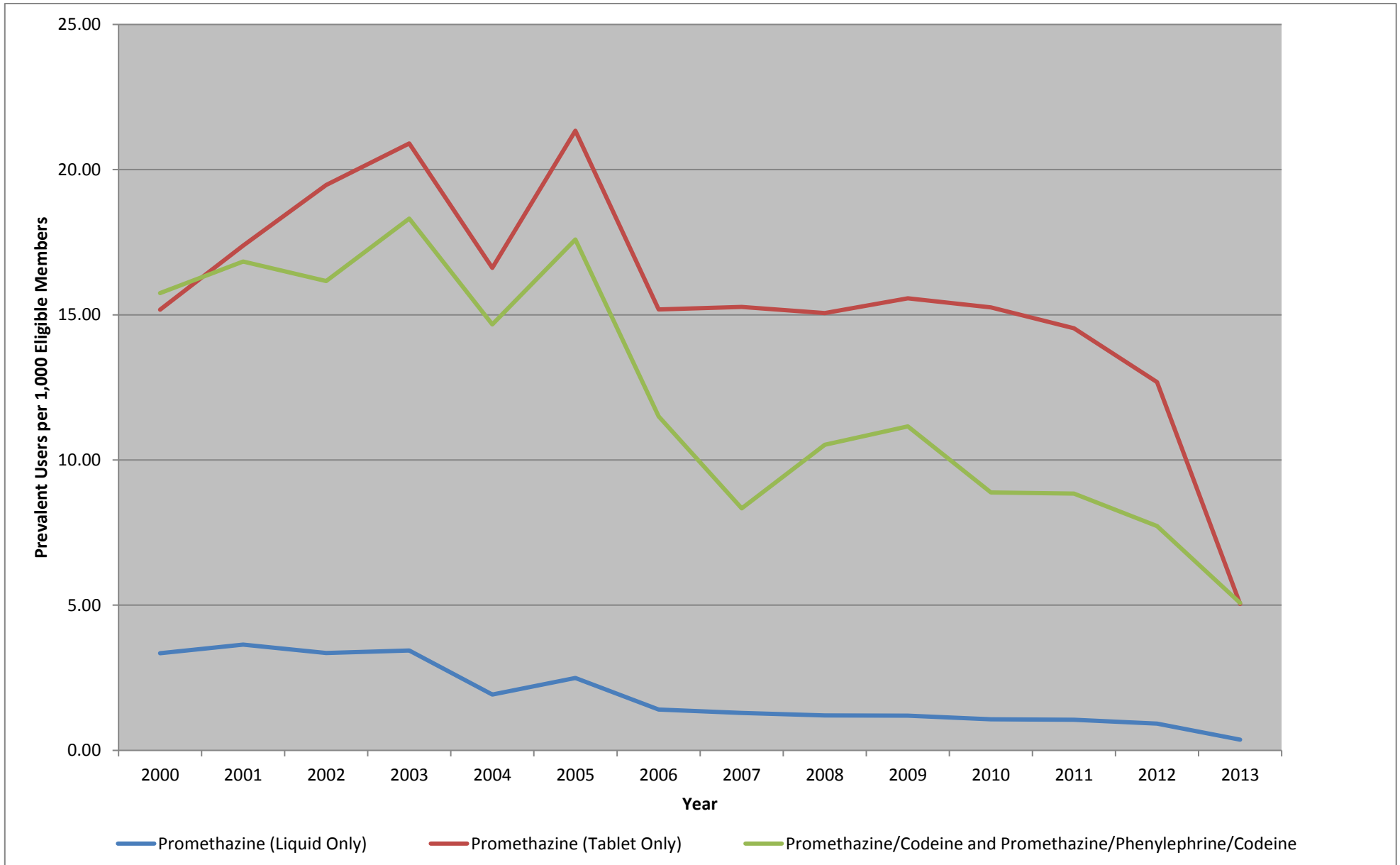
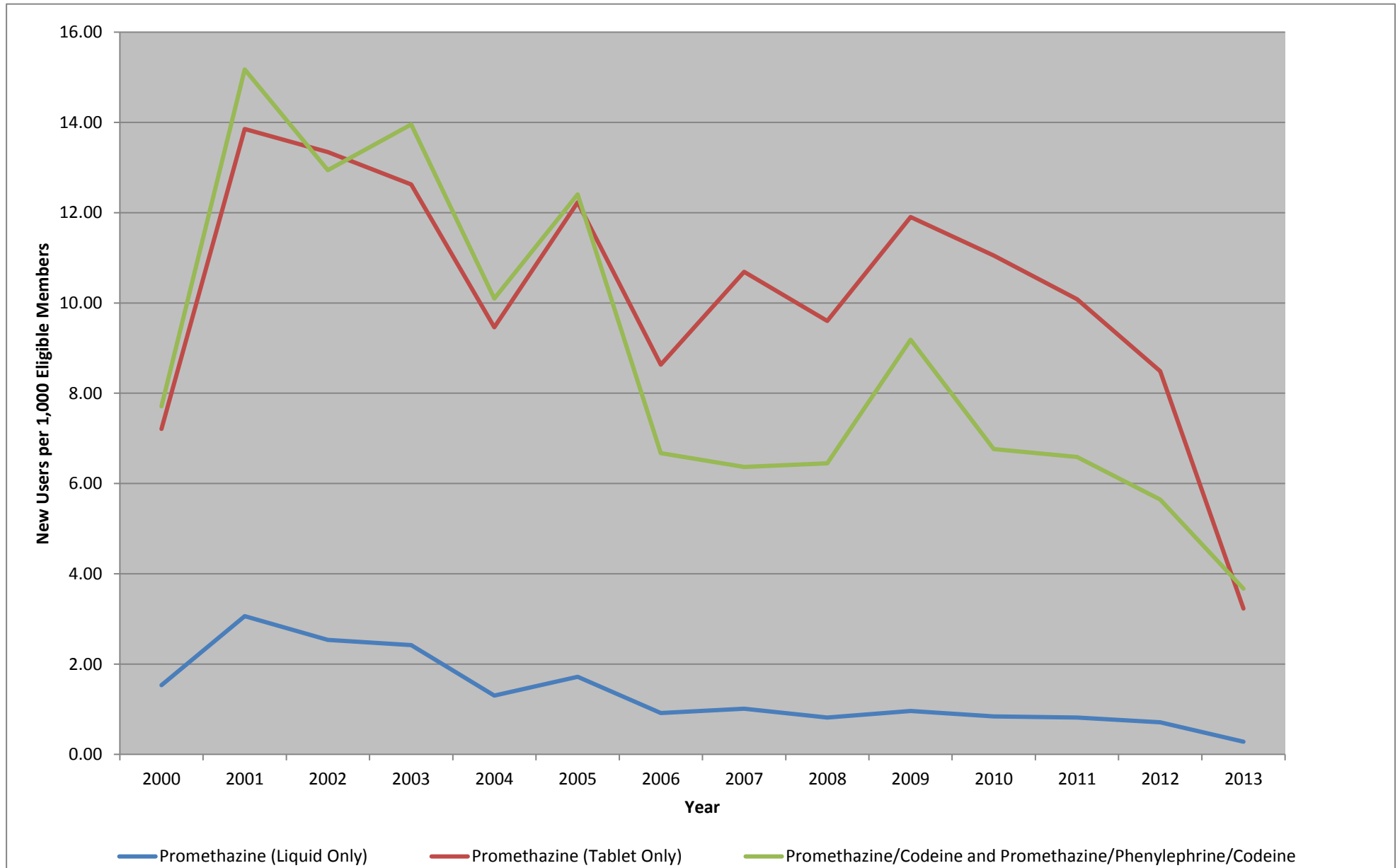


Figure 1b. Incident Promethazine Use in the Mini-Sentinel Distributed Database (MSDD) between January 1, 2000 and May 31, 2013, by Drug Product and Year





**Table 5a. Summary of Prevalent Promethazine Use in the Mini-Sentinel Distributed Database (MSDD) between January 1, 2000 and May 31, 2013, by Drug Product, Age Group, and Year**

|                                   | Users*       | Dispensings  | Days Supplied | Amount Supplied | Eligible Members** | Member-Years**   | Days Supplied per user | Dispensings per User | Days Supplied per Dispensing | Users per 1K Eligible Members |
|-----------------------------------|--------------|--------------|---------------|-----------------|--------------------|------------------|------------------------|----------------------|------------------------------|-------------------------------|
| <b>Promethazine (Liquid Only)</b> |              |              |               |                 |                    |                  |                        |                      |                              |                               |
| <b>0 to 5 Months</b>              | <b>1,505</b> | <b>1,639</b> | <b>16,393</b> | <b>138,036</b>  | <b>3,662,644</b>   | <b>1,589,292</b> | <b>10.89</b>           | <b>1.09</b>          | <b>10.00</b>                 | <b>0.41</b>                   |
| 2000                              | 279          | 311          | 2,925         | 27,311          |                    |                  | 10.48                  | 1.11                 | 9.41                         |                               |
| 2001                              | 303          | 330          | 3,629         | 26,177          |                    |                  | 11.98                  | 1.09                 | 11.00                        |                               |
| 2002                              | 261          | 278          | 2,748         | 22,515          |                    |                  | 10.53                  | 1.07                 | 9.88                         |                               |
| 2003                              | 249          | 271          | 2,651         | 20,456          |                    |                  | 10.65                  | 1.09                 | 9.78                         |                               |
| 2004                              | 167          | 181          | 1,985         | 16,686          |                    |                  | 11.89                  | 1.08                 | 10.97                        |                               |
| 2005                              | 114          | 117          | 1,009         | 10,886          |                    |                  | 8.85                   | 1.03                 | 8.62                         |                               |
| 2006                              | 44           | 49           | 554           | 4,610           |                    |                  | 12.59                  | 1.11                 | 11.31                        |                               |
| 2007                              | 15           | 15           | 125           | 1,161           |                    |                  | 8.33                   | 1.00                 | 8.33                         |                               |
| 2008                              | 26           | 26           | 290           | 3,343           |                    |                  | 11.15                  | 1.00                 | 11.15                        |                               |
| 2009                              | 24           | 24           | 180           | 1,825           |                    |                  | 7.50                   | 1.00                 | 7.50                         |                               |
| 2010                              | 16           | 16           | 108           | 1,218           |                    |                  | 6.75                   | 1.00                 | 6.75                         |                               |
| 2011                              | 13           | 13           | 107           | 1,090           |                    |                  | 8.23                   | 1.00                 | 8.23                         |                               |
| 2012                              | 5            | 5            | 59            | 488             |                    |                  | 11.80                  | 1.00                 | 11.80                        |                               |
| 2013                              | 3            | 3            | 23            | 270             |                    |                  | 7.67                   | 1.00                 | 7.67                         |                               |
| <b>6 to 11 Months</b>             | <b>5,231</b> | <b>5,833</b> | <b>57,516</b> | <b>563,990</b>  | <b>3,587,212</b>   | <b>1,697,810</b> | <b>11.00</b>           | <b>1.12</b>          | <b>9.86</b>                  | <b>1.46</b>                   |
| 2000                              | 800          | 897          | 9,270         | 91,253          |                    |                  | 11.59                  | 1.12                 | 10.33                        |                               |
| 2001                              | 866          | 960          | 9,329         | 91,524          |                    |                  | 10.77                  | 1.11                 | 9.72                         |                               |
| 2002                              | 853          | 944          | 10,943        | 90,719          |                    |                  | 12.83                  | 1.11                 | 11.59                        |                               |
| 2003                              | 874          | 976          | 9,608         | 91,659          |                    |                  | 10.99                  | 1.12                 | 9.84                         |                               |
| 2004                              | 604          | 661          | 6,927         | 71,533          |                    |                  | 11.47                  | 1.09                 | 10.48                        |                               |
| 2005                              | 512          | 548          | 4,474         | 54,279          |                    |                  | 8.74                   | 1.07                 | 8.16                         |                               |
| 2006                              | 231          | 246          | 1,961         | 21,340          |                    |                  | 8.49                   | 1.06                 | 7.97                         |                               |
| 2007                              | 140          | 144          | 1,049         | 12,030          |                    |                  | 7.49                   | 1.03                 | 7.28                         |                               |
| 2008                              | 156          | 159          | 1,296         | 14,520          |                    |                  | 8.31                   | 1.02                 | 8.15                         |                               |
| 2009                              | 104          | 107          | 920           | 9,753           |                    |                  | 8.85                   | 1.03                 | 8.60                         |                               |
| 2010                              | 80           | 82           | 792           | 7,260           |                    |                  | 9.90                   | 1.03                 | 9.66                         |                               |
| 2011                              | 66           | 66           | 555           | 4,935           |                    |                  | 8.41                   | 1.00                 | 8.41                         |                               |
| 2012                              | 29           | 29           | 254           | 2,217           |                    |                  | 8.76                   | 1.00                 | 8.76                         |                               |
| 2013                              | 13           | 14           | 138           | 968             |                    |                  | 10.62                  | 1.08                 | 9.86                         |                               |

|                        | Users*        | Dispensings   | Days Supplied  | Amount Supplied  | Eligible Members** | Member-Years**    | Days Supplied per user | Dispensings per User | Days Supplied per Dispensing | Users per 1K Eligible Members |
|------------------------|---------------|---------------|----------------|------------------|--------------------|-------------------|------------------------|----------------------|------------------------------|-------------------------------|
| <b>12 to 23 Months</b> | <b>13,281</b> | <b>15,059</b> | <b>139,463</b> | <b>1,655,368</b> | <b>4,444,514</b>   | <b>3,527,210</b>  | <b>10.50</b>           | <b>1.13</b>          | <b>9.26</b>                  | <b>2.99</b>                   |
| 2000                   | 1,643         | 1,914         | 18,395         | 213,555          |                    |                   | 11.20                  | 1.16                 | 9.61                         |                               |
| 2001                   | 1,827         | 2,073         | 23,372         | 224,942          |                    |                   | 12.79                  | 1.13                 | 11.27                        |                               |
| 2002                   | 1,955         | 2,194         | 22,768         | 238,300          |                    |                   | 11.65                  | 1.12                 | 10.38                        |                               |
| 2003                   | 1,873         | 2,078         | 19,844         | 218,139          |                    |                   | 10.59                  | 1.11                 | 9.55                         |                               |
| 2004                   | 1,143         | 1,254         | 11,733         | 216,919          |                    |                   | 10.27                  | 1.10                 | 9.36                         |                               |
| 2005                   | 1,148         | 1,245         | 9,584          | 131,287          |                    |                   | 8.35                   | 1.08                 | 7.70                         |                               |
| 2006                   | 792           | 856           | 6,425          | 85,681           |                    |                   | 8.11                   | 1.08                 | 7.51                         |                               |
| 2007                   | 574           | 612           | 4,410          | 60,157           |                    |                   | 7.68                   | 1.07                 | 7.21                         |                               |
| 2008                   | 827           | 851           | 7,018          | 82,473           |                    |                   | 8.49                   | 1.03                 | 8.25                         |                               |
| 2009                   | 634           | 648           | 4,985          | 60,028           |                    |                   | 7.86                   | 1.02                 | 7.69                         |                               |
| 2010                   | 600           | 623           | 4,905          | 59,199           |                    |                   | 8.18                   | 1.04                 | 7.87                         |                               |
| 2011                   | 404           | 420           | 3,525          | 39,161           |                    |                   | 8.73                   | 1.04                 | 8.39                         |                               |
| 2012                   | 215           | 217           | 1,984          | 19,236           |                    |                   | 9.23                   | 1.01                 | 9.14                         |                               |
| 2013                   | 72            | 74            | 515            | 6,291            |                    |                   | 7.15                   | 1.03                 | 6.96                         |                               |
| <b>2 to 4 Years</b>    | <b>71,668</b> | <b>87,302</b> | <b>659,038</b> | <b>9,644,989</b> | <b>7,402,184</b>   | <b>11,291,676</b> | <b>9.20</b>            | <b>1.22</b>          | <b>7.55</b>                  | <b>9.68</b>                   |
| 2000                   | 4,479         | 5,507         | 47,976         | 596,579          |                    |                   | 10.71                  | 1.23                 | 8.71                         |                               |
| 2001                   | 4,994         | 6,102         | 53,623         | 622,647          |                    |                   | 10.74                  | 1.22                 | 8.79                         |                               |
| 2002                   | 4,860         | 5,648         | 49,528         | 649,071          |                    |                   | 10.19                  | 1.16                 | 8.77                         |                               |
| 2003                   | 5,346         | 6,053         | 52,160         | 691,124          |                    |                   | 9.76                   | 1.13                 | 8.62                         |                               |
| 2004                   | 3,086         | 3,471         | 28,120         | 523,871          |                    |                   | 9.11                   | 1.12                 | 8.10                         |                               |
| 2005                   | 4,637         | 5,213         | 34,801         | 600,388          |                    |                   | 7.51                   | 1.12                 | 6.68                         |                               |
| 2006                   | 6,048         | 6,686         | 47,579         | 770,347          |                    |                   | 7.87                   | 1.11                 | 7.12                         |                               |
| 2007                   | 5,959         | 6,478         | 44,751         | 719,281          |                    |                   | 7.51                   | 1.09                 | 6.91                         |                               |
| 2008                   | 9,085         | 9,829         | 69,604         | 1,064,624        |                    |                   | 7.66                   | 1.08                 | 7.08                         |                               |
| 2009                   | 8,784         | 9,423         | 72,145         | 1,013,367        |                    |                   | 8.21                   | 1.07                 | 7.66                         |                               |
| 2010                   | 7,637         | 8,143         | 57,898         | 891,586          |                    |                   | 7.58                   | 1.07                 | 7.11                         |                               |
| 2011                   | 7,027         | 7,533         | 52,308         | 767,990          |                    |                   | 7.44                   | 1.07                 | 6.94                         |                               |
| 2012                   | 5,584         | 5,935         | 39,429         | 600,404          |                    |                   | 7.06                   | 1.06                 | 6.64                         |                               |
| 2013                   | 1,246         | 1,281         | 9,116          | 133,710          |                    |                   | 7.32                   | 1.03                 | 7.12                         |                               |

|                       | Users*         | Dispensings    | Days Supplied  | Amount Supplied   | Eligible Members** | Member-Years**    | Days Supplied per user | Dispensings per User | Days Supplied per Dispensing | Users per 1K Eligible Members |
|-----------------------|----------------|----------------|----------------|-------------------|--------------------|-------------------|------------------------|----------------------|------------------------------|-------------------------------|
| <b>5 to 9 Years</b>   | <b>110,516</b> | <b>140,694</b> | <b>909,672</b> | <b>17,710,853</b> | <b>10,477,293</b>  | <b>19,855,060</b> | <b>8.23</b>            | <b>1.27</b>          | <b>6.47</b>                  | <b>10.55</b>                  |
| 2000                  | 6,304          | 7,828          | 56,502         | 932,772           |                    |                   | 8.96                   | 1.24                 | 7.22                         |                               |
| 2001                  | 6,859          | 8,399          | 63,143         | 949,854           |                    |                   | 9.21                   | 1.22                 | 7.52                         |                               |
| 2002                  | 6,317          | 7,295          | 56,162         | 953,618           |                    |                   | 8.89                   | 1.15                 | 7.70                         |                               |
| 2003                  | 6,619          | 7,669          | 56,339         | 1,034,731         |                    |                   | 8.51                   | 1.16                 | 7.35                         |                               |
| 2004                  | 3,559          | 4,075          | 29,056         | 776,622           |                    |                   | 8.16                   | 1.14                 | 7.13                         |                               |
| 2005                  | 6,362          | 7,350          | 44,272         | 956,308           |                    |                   | 6.96                   | 1.16                 | 6.02                         |                               |
| 2006                  | 8,629          | 9,584          | 60,877         | 1,290,653         |                    |                   | 7.05                   | 1.11                 | 6.35                         |                               |
| 2007                  | 9,225          | 10,131         | 62,832         | 1,348,157         |                    |                   | 6.81                   | 1.10                 | 6.20                         |                               |
| 2008                  | 14,816         | 16,041         | 100,079        | 2,007,439         |                    |                   | 6.75                   | 1.08                 | 6.24                         |                               |
| 2009                  | 15,589         | 16,851         | 106,749        | 2,085,373         |                    |                   | 6.85                   | 1.08                 | 6.33                         |                               |
| 2010                  | 13,929         | 15,071         | 92,190         | 1,776,276         |                    |                   | 6.62                   | 1.08                 | 6.12                         |                               |
| 2011                  | 13,122         | 14,305         | 87,035         | 1,706,505         |                    |                   | 6.63                   | 1.09                 | 6.08                         |                               |
| 2012                  | 12,314         | 13,524         | 78,715         | 1,583,860         |                    |                   | 6.39                   | 1.10                 | 5.82                         |                               |
| 2013                  | 2,470          | 2,571          | 15,721         | 308,685           |                    |                   | 6.36                   | 1.04                 | 6.11                         |                               |
| <b>10 to 17 Years</b> | <b>50,519</b>  | <b>62,778</b>  | <b>423,552</b> | <b>9,936,528</b>  | <b>15,005,187</b>  | <b>33,943,372</b> | <b>8.38</b>            | <b>1.24</b>          | <b>6.75</b>                  | <b>3.37</b>                   |
| 2000                  | 2,852          | 3,462          | 27,375         | 471,186           |                    |                   | 9.60                   | 1.21                 | 7.91                         |                               |
| 2001                  | 3,249          | 3,875          | 30,881         | 543,145           |                    |                   | 9.50                   | 1.19                 | 7.97                         |                               |
| 2002                  | 3,096          | 3,651          | 28,128         | 568,761           |                    |                   | 9.09                   | 1.18                 | 7.70                         |                               |
| 2003                  | 3,314          | 3,846          | 29,726         | 626,832           |                    |                   | 8.97                   | 1.16                 | 7.73                         |                               |
| 2004                  | 1,607          | 1,865          | 13,901         | 388,281           |                    |                   | 8.65                   | 1.16                 | 7.45                         |                               |
| 2005                  | 2,631          | 3,038          | 18,210         | 490,208           |                    |                   | 6.92                   | 1.15                 | 5.99                         |                               |
| 2006                  | 3,724          | 4,107          | 26,883         | 679,994           |                    |                   | 7.22                   | 1.10                 | 6.55                         |                               |
| 2007                  | 3,980          | 4,385          | 28,122         | 709,392           |                    |                   | 7.07                   | 1.10                 | 6.41                         |                               |
| 2008                  | 6,667          | 7,259          | 45,700         | 1,140,016         |                    |                   | 6.85                   | 1.09                 | 6.30                         |                               |
| 2009                  | 7,302          | 7,959          | 51,201         | 1,249,357         |                    |                   | 7.01                   | 1.09                 | 6.43                         |                               |
| 2010                  | 5,920          | 6,403          | 40,354         | 1,009,347         |                    |                   | 6.82                   | 1.08                 | 6.30                         |                               |
| 2011                  | 5,739          | 6,276          | 40,456         | 1,009,950         |                    |                   | 7.05                   | 1.09                 | 6.45                         |                               |
| 2012                  | 4,892          | 5,373          | 33,506         | 846,039           |                    |                   | 6.85                   | 1.10                 | 6.24                         |                               |
| 2013                  | 1,204          | 1,279          | 9,109          | 204,020           |                    |                   | 7.57                   | 1.06                 | 7.12                         |                               |

|                       | Users*        | Dispensings    | Days Supplied    | Amount Supplied   | Eligible Members** | Member-Years**     | Days Supplied per user | Dispensings per User | Days Supplied per Dispensing | Users per 1K Eligible Members |
|-----------------------|---------------|----------------|------------------|-------------------|--------------------|--------------------|------------------------|----------------------|------------------------------|-------------------------------|
| <b>18 to 44 Years</b> | <b>92,232</b> | <b>130,755</b> | <b>1,211,314</b> | <b>28,844,715</b> | <b>54,077,095</b>  | <b>116,008,745</b> | <b>13.13</b>           | <b>1.42</b>          | <b>9.26</b>                  | <b>1.71</b>                   |
| 2000                  | 5,754         | 7,745          | 87,650           | 1,417,760         |                    |                    | 15.23                  | 1.35                 | 11.32                        |                               |
| 2001                  | 5,951         | 8,092          | 107,046          | 1,493,708         |                    |                    | 17.99                  | 1.36                 | 13.23                        |                               |
| 2002                  | 5,291         | 7,312          | 99,893           | 1,407,825         |                    |                    | 18.88                  | 1.38                 | 13.66                        |                               |
| 2003                  | 5,021         | 7,255          | 85,808           | 1,470,863         |                    |                    | 17.09                  | 1.44                 | 11.83                        |                               |
| 2004                  | 3,152         | 4,371          | 36,623           | 1,119,098         |                    |                    | 11.62                  | 1.39                 | 8.38                         |                               |
| 2005                  | 3,779         | 5,121          | 38,461           | 1,201,193         |                    |                    | 10.18                  | 1.36                 | 7.51                         |                               |
| 2006                  | 6,225         | 7,330          | 59,122           | 1,719,866         |                    |                    | 9.50                   | 1.18                 | 8.07                         |                               |
| 2007                  | 6,254         | 7,542          | 58,059           | 1,672,030         |                    |                    | 9.28                   | 1.21                 | 7.70                         |                               |
| 2008                  | 14,396        | 17,089         | 131,800          | 3,752,597         |                    |                    | 9.16                   | 1.19                 | 7.71                         |                               |
| 2009                  | 13,407        | 15,902         | 130,677          | 3,627,647         |                    |                    | 9.75                   | 1.19                 | 8.22                         |                               |
| 2010                  | 10,702        | 13,160         | 111,310          | 3,062,497         |                    |                    | 10.40                  | 1.23                 | 8.46                         |                               |
| 2011                  | 10,892        | 13,383         | 116,487          | 3,037,965         |                    |                    | 10.69                  | 1.23                 | 8.70                         |                               |
| 2012                  | 9,577         | 11,920         | 106,277          | 2,845,990         |                    |                    | 11.10                  | 1.24                 | 8.92                         |                               |
| 2013                  | 4,029         | 4,533          | 42,101           | 1,015,676         |                    |                    | 10.45                  | 1.13                 | 9.29                         |                               |
| <b>45 to 64 Years</b> | <b>75,782</b> | <b>129,225</b> | <b>1,326,203</b> | <b>30,800,572</b> | <b>31,931,924</b>  | <b>86,087,673</b>  | <b>17.50</b>           | <b>1.71</b>          | <b>10.26</b>                 | <b>2.37</b>                   |
| 2000                  | 4,807         | 7,696          | 94,713           | 1,534,730         |                    |                    | 19.70                  | 1.60                 | 12.31                        |                               |
| 2001                  | 4,888         | 7,874          | 116,478          | 1,642,226         |                    |                    | 23.83                  | 1.61                 | 14.79                        |                               |
| 2002                  | 4,318         | 6,974          | 102,381          | 1,474,855         |                    |                    | 23.71                  | 1.62                 | 14.68                        |                               |
| 2003                  | 4,200         | 7,066          | 100,939          | 1,615,861         |                    |                    | 24.03                  | 1.68                 | 14.29                        |                               |
| 2004                  | 2,916         | 4,604          | 46,753           | 1,495,526         |                    |                    | 16.03                  | 1.58                 | 10.15                        |                               |
| 2005                  | 3,219         | 5,158          | 46,648           | 1,379,077         |                    |                    | 14.49                  | 1.60                 | 9.04                         |                               |
| 2006                  | 5,102         | 6,723          | 61,178           | 1,796,230         |                    |                    | 11.99                  | 1.32                 | 9.10                         |                               |
| 2007                  | 5,571         | 7,372          | 63,562           | 1,962,184         |                    |                    | 11.41                  | 1.32                 | 8.62                         |                               |
| 2008                  | 13,235        | 17,392         | 149,261          | 4,064,833         |                    |                    | 11.28                  | 1.31                 | 8.58                         |                               |
| 2009                  | 11,700        | 15,521         | 140,200          | 3,742,522         |                    |                    | 11.98                  | 1.33                 | 9.03                         |                               |
| 2010                  | 9,840         | 13,267         | 121,872          | 3,196,223         |                    |                    | 12.39                  | 1.35                 | 9.19                         |                               |
| 2011                  | 9,825         | 13,360         | 125,209          | 3,126,834         |                    |                    | 12.74                  | 1.36                 | 9.37                         |                               |
| 2012                  | 8,447         | 11,291         | 109,456          | 2,654,852         |                    |                    | 12.96                  | 1.34                 | 9.69                         |                               |
| 2013                  | 4,189         | 4,927          | 47,553           | 1,114,619         |                    |                    | 11.35                  | 1.18                 | 9.65                         |                               |

|                                   | Users*        | Dispensings   | Days Supplied  | Amount Supplied   | Eligible Members** | Member-Years**    | Days Supplied per user | Dispensings per User | Days Supplied per Dispensing | Users per 1K Eligible Members |
|-----------------------------------|---------------|---------------|----------------|-------------------|--------------------|-------------------|------------------------|----------------------|------------------------------|-------------------------------|
| <b>65+ Years</b>                  | <b>35,228</b> | <b>65,255</b> | <b>759,687</b> | <b>14,377,321</b> | <b>9,737,147</b>   | <b>31,273,211</b> | <b>21.56</b>           | <b>1.85</b>          | <b>11.64</b>                 | <b>3.62</b>                   |
| 2000                              | 2,642         | 4,301         | 60,943         | 882,532           |                    |                   | 23.07                  | 1.63                 | 14.17                        |                               |
| 2001                              | 2,729         | 4,422         | 79,452         | 951,588           |                    |                   | 29.11                  | 1.62                 | 17.97                        |                               |
| 2002                              | 2,475         | 4,070         | 77,927         | 907,929           |                    |                   | 31.49                  | 1.64                 | 19.15                        |                               |
| 2003                              | 2,358         | 3,906         | 72,804         | 879,545           |                    |                   | 30.88                  | 1.66                 | 18.64                        |                               |
| 2004                              | 1,767         | 2,794         | 32,234         | 719,118           |                    |                   | 18.24                  | 1.58                 | 11.54                        |                               |
| 2005                              | 1,748         | 2,884         | 27,679         | 693,131           |                    |                   | 15.83                  | 1.65                 | 9.60                         |                               |
| 2006                              | 2,502         | 3,564         | 33,298         | 814,530           |                    |                   | 13.31                  | 1.42                 | 9.34                         |                               |
| 2007                              | 3,091         | 4,393         | 41,664         | 992,209           |                    |                   | 13.48                  | 1.42                 | 9.48                         |                               |
| 2008                              | 5,854         | 8,174         | 75,202         | 1,760,102         |                    |                   | 12.85                  | 1.40                 | 9.20                         |                               |
| 2009                              | 5,147         | 7,132         | 66,671         | 1,522,138         |                    |                   | 12.95                  | 1.39                 | 9.35                         |                               |
| 2010                              | 5,373         | 7,418         | 70,469         | 1,609,429         |                    |                   | 13.12                  | 1.38                 | 9.50                         |                               |
| 2011                              | 4,772         | 6,583         | 63,354         | 1,402,396         |                    |                   | 13.28                  | 1.38                 | 9.62                         |                               |
| 2012                              | 3,064         | 4,164         | 43,673         | 938,291           |                    |                   | 14.25                  | 1.36                 | 10.49                        |                               |
| 2013                              | 1,222         | 1,450         | 14,317         | 304,383           |                    |                   | 11.72                  | 1.19                 | 9.87                         |                               |
| <b>Promethazine (Tablet Only)</b> |               |               |                |                   |                    |                   |                        |                      |                              |                               |
| <b>0 to 5 Months</b>              | <b>115</b>    | <b>117</b>    | <b>433</b>     | <b>1,305</b>      | <b>3,662,644</b>   | <b>1,589,292</b>  | <b>3.77</b>            | <b>1.02</b>          | <b>3.70</b>                  | <b>0.03</b>                   |
| 2000                              | 1             | 1             | 3              | 6                 |                    |                   | 3.00                   | 1.00                 | 3.00                         |                               |
| 2001                              | 5             | 5             | 31             | 101               |                    |                   | 6.20                   | 1.00                 | 6.20                         |                               |
| 2002                              | 5             | 5             | 15             | 49                |                    |                   | 3.00                   | 1.00                 | 3.00                         |                               |
| 2003                              | 6             | 6             | 12             | 46                |                    |                   | 2.00                   | 1.00                 | 2.00                         |                               |
| 2004                              | 14            | 14            | 49             | 115               |                    |                   | 3.50                   | 1.00                 | 3.50                         |                               |
| 2005                              | 32            | 32            | 92             | 261               |                    |                   | 2.88                   | 1.00                 | 2.88                         |                               |
| 2006                              | 12            | 12            | 40             | 132               |                    |                   | 3.33                   | 1.00                 | 3.33                         |                               |
| 2007                              | 9             | 9             | 38             | 78                |                    |                   | 4.22                   | 1.00                 | 4.22                         |                               |
| 2008                              | 15            | 15            | 42             | 200               |                    |                   | 2.80                   | 1.00                 | 2.80                         |                               |
| 2009                              | 5             | 5             | 28             | 94                |                    |                   | 5.60                   | 1.00                 | 5.60                         |                               |
| 2010                              | 6             | 6             | 29             | 127               |                    |                   | 4.83                   | 1.00                 | 4.83                         |                               |
| 2011                              | 4             | 4             | 37             | 42                |                    |                   | 9.25                   | 1.00                 | 9.25                         |                               |
| 2012                              | 2             | 2             | 7              | 24                |                    |                   | 3.50                   | 1.00                 | 3.50                         |                               |
| 2013                              | 1             | 1             | 10             | 30                |                    |                   | 10.00                  | 1.00                 | 10.00                        |                               |

|                        | Users*       | Dispensings  | Days Supplied | Amount Supplied | Eligible Members** | Member-Years**   | Days Supplied per user | Dispensings per User | Days Supplied per Dispensing | Users per 1K Eligible Members |
|------------------------|--------------|--------------|---------------|-----------------|--------------------|------------------|------------------------|----------------------|------------------------------|-------------------------------|
| <b>6 to 11 Months</b>  | <b>316</b>   | <b>335</b>   | <b>1,195</b>  | <b>3,668</b>    | <b>3,587,212</b>   | <b>1,697,810</b> | <b>3.78</b>            | <b>1.06</b>          | <b>3.57</b>                  | <b>0.09</b>                   |
| 2000                   | 10           | 10           | 20            | 129             |                    |                  | 2.00                   | 1.00                 | 2.00                         |                               |
| 2001                   | 11           | 11           | 29            | 137             |                    |                  | 2.64                   | 1.00                 | 2.64                         |                               |
| 2002                   | 14           | 14           | 43            | 154             |                    |                  | 3.07                   | 1.00                 | 3.07                         |                               |
| 2003                   | 26           | 27           | 88            | 475             |                    |                  | 3.38                   | 1.04                 | 3.26                         |                               |
| 2004                   | 33           | 33           | 138           | 423             |                    |                  | 4.18                   | 1.00                 | 4.18                         |                               |
| 2005                   | 83           | 90           | 282           | 768             |                    |                  | 3.40                   | 1.08                 | 3.13                         |                               |
| 2006                   | 27           | 30           | 117           | 256             |                    |                  | 4.33                   | 1.11                 | 3.90                         |                               |
| 2007                   | 32           | 32           | 142           | 386             |                    |                  | 4.44                   | 1.00                 | 4.44                         |                               |
| 2008                   | 29           | 31           | 124           | 382             |                    |                  | 4.28                   | 1.07                 | 4.00                         |                               |
| 2009                   | 16           | 16           | 61            | 138             |                    |                  | 3.81                   | 1.00                 | 3.81                         |                               |
| 2010                   | 14           | 16           | 55            | 142             |                    |                  | 3.93                   | 1.14                 | 3.44                         |                               |
| 2011                   | 17           | 19           | 60            | 172             |                    |                  | 3.53                   | 1.12                 | 3.16                         |                               |
| 2012                   | 3            | 4            | 14            | 73              |                    |                  | 4.67                   | 1.33                 | 3.50                         |                               |
| 2013                   | 2            | 2            | 22            | 33              |                    |                  | 11.00                  | 1.00                 | 11.00                        |                               |
| <b>12 to 23 Months</b> | <b>1,036</b> | <b>1,186</b> | <b>4,341</b>  | <b>11,424</b>   | <b>4,444,514</b>   | <b>3,527,210</b> | <b>4.19</b>            | <b>1.14</b>          | <b>3.66</b>                  | <b>0.23</b>                   |
| 2000                   | 44           | 44           | 212           | 703             |                    |                  | 4.82                   | 1.00                 | 4.82                         |                               |
| 2001                   | 43           | 47           | 158           | 585             |                    |                  | 3.67                   | 1.09                 | 3.36                         |                               |
| 2002                   | 34           | 37           | 243           | 701             |                    |                  | 7.15                   | 1.09                 | 6.57                         |                               |
| 2003                   | 66           | 68           | 312           | 758             |                    |                  | 4.73                   | 1.03                 | 4.59                         |                               |
| 2004                   | 87           | 93           | 438           | 1,112           |                    |                  | 5.03                   | 1.07                 | 4.71                         |                               |
| 2005                   | 215          | 242          | 801           | 2,357           |                    |                  | 3.73                   | 1.13                 | 3.31                         |                               |
| 2006                   | 109          | 128          | 488           | 1,108           |                    |                  | 4.48                   | 1.17                 | 3.81                         |                               |
| 2007                   | 86           | 110          | 353           | 787             |                    |                  | 4.10                   | 1.28                 | 3.21                         |                               |
| 2008                   | 119          | 133          | 467           | 1,212           |                    |                  | 3.92                   | 1.12                 | 3.51                         |                               |
| 2009                   | 83           | 101          | 328           | 1,042           |                    |                  | 3.95                   | 1.22                 | 3.25                         |                               |
| 2010                   | 64           | 72           | 181           | 279             |                    |                  | 2.83                   | 1.13                 | 2.51                         |                               |
| 2011                   | 84           | 89           | 279           | 595             |                    |                  | 3.32                   | 1.06                 | 3.13                         |                               |
| 2012                   | 18           | 19           | 71            | 148             |                    |                  | 3.94                   | 1.06                 | 3.74                         |                               |
| 2013                   | 3            | 3            | 10            | 37              |                    |                  | 3.33                   | 1.00                 | 3.33                         |                               |

|                     | Users*        | Dispensings   | Days Supplied  | Amount Supplied   | Eligible Members** | Member-Years**    | Days Supplied per user | Dispensings per User | Days Supplied per Dispensing | Users per 1K Eligible Members |
|---------------------|---------------|---------------|----------------|-------------------|--------------------|-------------------|------------------------|----------------------|------------------------------|-------------------------------|
| <b>2 to 4 Years</b> | <b>9,757</b>  | <b>12,377</b> | <b>44,361</b>  | <b>3,040,865</b>  | <b>7,402,184</b>   | <b>11,291,676</b> | <b>4.55</b>            | <b>1.27</b>          | <b>3.58</b>                  | <b>1.32</b>                   |
| 2000                | 173           | 182           | 909            | 2,675             |                    |                   | 5.25                   | 1.05                 | 4.99                         |                               |
| 2001                | 201           | 211           | 982            | 2,628             |                    |                   | 4.89                   | 1.05                 | 4.65                         |                               |
| 2002                | 264           | 285           | 1,202          | 3,107             |                    |                   | 4.55                   | 1.08                 | 4.22                         |                               |
| 2003                | 315           | 351           | 1,348          | 3,509             |                    |                   | 4.28                   | 1.11                 | 3.84                         |                               |
| 2004                | 287           | 318           | 1,427          | 3,517             |                    |                   | 4.97                   | 1.11                 | 4.49                         |                               |
| 2005                | 705           | 824           | 2,963          | 7,608             |                    |                   | 4.20                   | 1.17                 | 3.60                         |                               |
| 2006                | 772           | 856           | 3,243          | 8,826             |                    |                   | 4.20                   | 1.11                 | 3.79                         |                               |
| 2007                | 1,082         | 1,360         | 4,171          | 2,948,230         |                    |                   | 3.85                   | 1.26                 | 3.07                         |                               |
| 2008                | 1,296         | 1,619         | 5,937          | 13,929            |                    |                   | 4.58                   | 1.25                 | 3.67                         |                               |
| 2009                | 1,218         | 1,434         | 4,902          | 16,778            |                    |                   | 4.02                   | 1.18                 | 3.42                         |                               |
| 2010                | 1,012         | 1,214         | 4,093          | 9,101             |                    |                   | 4.04                   | 1.20                 | 3.37                         |                               |
| 2011                | 1,821         | 2,116         | 6,840          | 12,001            |                    |                   | 3.76                   | 1.16                 | 3.23                         |                               |
| 2012                | 1,325         | 1,514         | 5,877          | 8,047             |                    |                   | 4.44                   | 1.14                 | 3.88                         |                               |
| 2013                | 89            | 93            | 467            | 909               |                    |                   | 5.25                   | 1.04                 | 5.02                         |                               |
| <b>5 to 9 Years</b> | <b>56,321</b> | <b>75,758</b> | <b>343,969</b> | <b>11,753,681</b> | <b>10,477,293</b>  | <b>19,855,060</b> | <b>6.11</b>            | <b>1.35</b>          | <b>4.54</b>                  | <b>5.38</b>                   |
| 2000                | 1,959         | 2,303         | 10,621         | 34,668            |                    |                   | 5.42                   | 1.18                 | 4.61                         |                               |
| 2001                | 2,361         | 2,774         | 12,640         | 40,319            |                    |                   | 5.35                   | 1.17                 | 4.56                         |                               |
| 2002                | 2,568         | 3,026         | 13,862         | 40,771            |                    |                   | 5.40                   | 1.18                 | 4.58                         |                               |
| 2003                | 2,960         | 3,468         | 15,567         | 46,957            |                    |                   | 5.26                   | 1.17                 | 4.49                         |                               |
| 2004                | 1,661         | 1,994         | 11,843         | 69,713            |                    |                   | 7.13                   | 1.20                 | 5.94                         |                               |
| 2005                | 3,399         | 4,131         | 18,992         | 52,891            |                    |                   | 5.59                   | 1.22                 | 4.60                         |                               |
| 2006                | 4,834         | 5,623         | 26,950         | 74,224            |                    |                   | 5.58                   | 1.16                 | 4.79                         |                               |
| 2007                | 5,511         | 6,802         | 29,482         | 7,830,623         |                    |                   | 5.35                   | 1.23                 | 4.33                         |                               |
| 2008                | 8,253         | 9,863         | 44,324         | 3,125,807         |                    |                   | 5.37                   | 1.20                 | 4.49                         |                               |
| 2009                | 7,962         | 9,434         | 43,676         | 123,883           |                    |                   | 5.49                   | 1.18                 | 4.63                         |                               |
| 2010                | 7,154         | 8,436         | 38,634         | 101,945           |                    |                   | 5.40                   | 1.18                 | 4.58                         |                               |
| 2011                | 7,925         | 9,429         | 39,225         | 107,887           |                    |                   | 4.95                   | 1.19                 | 4.16                         |                               |
| 2012                | 6,528         | 7,562         | 33,178         | 89,450            |                    |                   | 5.08                   | 1.16                 | 4.39                         |                               |
| 2013                | 883           | 913           | 4,975          | 14,543            |                    |                   | 5.63                   | 1.03                 | 5.45                         |                               |

|                       | Users*           | Dispensings      | Days Supplied     | Amount Supplied    | Eligible Members** | Member-Years**     | Days Supplied per user | Dispensings per User | Days Supplied per Dispensing | Users per 1K Eligible Members |
|-----------------------|------------------|------------------|-------------------|--------------------|--------------------|--------------------|------------------------|----------------------|------------------------------|-------------------------------|
| <b>10 to 17 Years</b> | <b>375,661</b>   | <b>566,263</b>   | <b>2,758,212</b>  | <b>15,699,976</b>  | <b>15,005,187</b>  | <b>33,943,372</b>  | <b>7.34</b>            | <b>1.51</b>          | <b>4.87</b>                  | <b>25.04</b>                  |
| 2000                  | 12,657           | 16,588           | 76,311            | 281,792            |                    |                    | 6.03                   | 1.31                 | 4.60                         |                               |
| 2001                  | 14,455           | 19,145           | 86,568            | 317,441            |                    |                    | 5.99                   | 1.32                 | 4.52                         |                               |
| 2002                  | 16,447           | 21,321           | 99,717            | 349,580            |                    |                    | 6.06                   | 1.30                 | 4.68                         |                               |
| 2003                  | 18,058           | 23,341           | 109,565           | 383,455            |                    |                    | 6.07                   | 1.29                 | 4.69                         |                               |
| 2004                  | 11,519           | 14,315           | 81,319            | 443,990            |                    |                    | 7.06                   | 1.24                 | 5.68                         |                               |
| 2005                  | 20,009           | 26,174           | 124,108           | 441,450            |                    |                    | 6.20                   | 1.31                 | 4.74                         |                               |
| 2006                  | 33,293           | 41,315           | 207,953           | 739,281            |                    |                    | 6.25                   | 1.24                 | 5.03                         |                               |
| 2007                  | 35,331           | 43,597           | 210,591           | 6,414,359          |                    |                    | 5.96                   | 1.23                 | 4.83                         |                               |
| 2008                  | 62,101           | 73,500           | 355,653           | 1,272,138          |                    |                    | 5.73                   | 1.18                 | 4.84                         |                               |
| 2009                  | 66,688           | 78,759           | 389,827           | 1,385,745          |                    |                    | 5.85                   | 1.18                 | 4.95                         |                               |
| 2010                  | 59,095           | 70,647           | 342,737           | 1,240,650          |                    |                    | 5.80                   | 1.20                 | 4.85                         |                               |
| 2011                  | 55,114           | 66,529           | 320,592           | 1,162,559          |                    |                    | 5.82                   | 1.21                 | 4.82                         |                               |
| 2012                  | 49,387           | 60,000           | 295,411           | 1,059,264          |                    |                    | 5.98                   | 1.21                 | 4.92                         |                               |
| 2013                  | 10,397           | 11,032           | 57,860            | 208,272            |                    |                    | 5.57                   | 1.06                 | 5.24                         |                               |
| <b>18 to 44 Years</b> | <b>2,219,155</b> | <b>4,406,446</b> | <b>31,744,244</b> | <b>124,396,474</b> | <b>54,077,095</b>  | <b>116,008,745</b> | <b>14.30</b>           | <b>1.99</b>          | <b>7.20</b>                  | <b>41.04</b>                  |
| 2000                  | 71,086           | 135,697          | 940,722           | 3,458,922          |                    |                    | 13.23                  | 1.91                 | 6.93                         |                               |
| 2001                  | 79,088           | 154,082          | 1,109,497         | 3,918,311          |                    |                    | 14.03                  | 1.95                 | 7.20                         |                               |
| 2002                  | 88,120           | 172,120          | 1,281,975         | 4,451,679          |                    |                    | 14.55                  | 1.95                 | 7.45                         |                               |
| 2003                  | 90,780           | 179,743          | 1,379,040         | 4,856,300          |                    |                    | 15.19                  | 1.98                 | 7.67                         |                               |
| 2004                  | 77,369           | 146,712          | 1,358,350         | 8,656,222          |                    |                    | 17.56                  | 1.90                 | 9.26                         |                               |
| 2005                  | 103,625          | 189,002          | 1,487,894         | 5,256,071          |                    |                    | 14.36                  | 1.82                 | 7.87                         |                               |
| 2006                  | 197,509          | 290,982          | 2,146,870         | 8,021,104          |                    |                    | 10.87                  | 1.47                 | 7.38                         |                               |
| 2007                  | 215,971          | 318,176          | 2,269,612         | 11,540,763         |                    |                    | 10.51                  | 1.47                 | 7.13                         |                               |
| 2008                  | 429,257          | 601,584          | 4,111,036         | 17,076,297         |                    |                    | 9.58                   | 1.40                 | 6.83                         |                               |
| 2009                  | 420,409          | 589,618          | 4,075,227         | 14,893,124         |                    |                    | 9.69                   | 1.40                 | 6.91                         |                               |
| 2010                  | 389,378          | 549,822          | 3,846,481         | 14,098,720         |                    |                    | 9.88                   | 1.41                 | 7.00                         |                               |
| 2011                  | 355,780          | 507,573          | 3,613,464         | 13,228,301         |                    |                    | 10.16                  | 1.43                 | 7.12                         |                               |
| 2012                  | 317,056          | 451,877          | 3,256,900         | 11,800,105         |                    |                    | 10.27                  | 1.43                 | 7.21                         |                               |
| 2013                  | 97,782           | 119,458          | 867,176           | 3,140,555          |                    |                    | 8.87                   | 1.22                 | 7.26                         |                               |



|                       | Users*           | Dispensings      | Days Supplied     | Amount Supplied    | Eligible Members** | Member-Years**    | Days Supplied per user | Dispensings per User | Days Supplied per Dispensing | Users per 1K Eligible Members |
|-----------------------|------------------|------------------|-------------------|--------------------|--------------------|-------------------|------------------------|----------------------|------------------------------|-------------------------------|
| <b>45 to 64 Years</b> | <b>1,282,965</b> | <b>3,074,687</b> | <b>31,167,486</b> | <b>109,352,023</b> | <b>31,931,924</b>  | <b>86,087,673</b> | <b>24.29</b>           | <b>2.40</b>          | <b>10.14</b>                 | <b>40.18</b>                  |
| 2000                  | 32,291           | 80,080           | 754,944           | 2,581,229          |                    |                   | 23.38                  | 2.48                 | 9.43                         |                               |
| 2001                  | 37,218           | 94,955           | 935,347           | 3,068,532          |                    |                   | 25.13                  | 2.55                 | 9.85                         |                               |
| 2002                  | 43,279           | 110,483          | 1,124,360         | 3,676,040          |                    |                   | 25.98                  | 2.55                 | 10.18                        |                               |
| 2003                  | 47,223           | 122,941          | 1,296,411         | 4,177,610          |                    |                   | 27.45                  | 2.60                 | 10.54                        |                               |
| 2004                  | 44,936           | 112,545          | 1,395,997         | 6,847,981          |                    |                   | 31.07                  | 2.50                 | 12.40                        |                               |
| 2005                  | 54,537           | 130,041          | 1,447,630         | 4,647,649          |                    |                   | 26.54                  | 2.38                 | 11.13                        |                               |
| 2006                  | 99,244           | 163,501          | 1,699,383         | 5,935,288          |                    |                   | 17.12                  | 1.65                 | 10.39                        |                               |
| 2007                  | 118,172          | 200,253          | 2,023,881         | 7,090,186          |                    |                   | 17.13                  | 1.69                 | 10.11                        |                               |
| 2008                  | 249,500          | 409,650          | 3,890,680         | 14,441,088         |                    |                   | 15.59                  | 1.64                 | 9.50                         |                               |
| 2009                  | 252,806          | 419,219          | 4,086,899         | 14,078,590         |                    |                   | 16.17                  | 1.66                 | 9.75                         |                               |
| 2010                  | 244,041          | 410,548          | 4,109,013         | 14,102,711         |                    |                   | 16.84                  | 1.68                 | 10.01                        |                               |
| 2011                  | 226,904          | 392,040          | 4,075,401         | 13,919,038         |                    |                   | 17.96                  | 1.73                 | 10.40                        |                               |
| 2012                  | 197,237          | 327,569          | 3,335,167         | 11,362,946         |                    |                   | 16.91                  | 1.66                 | 10.18                        |                               |
| 2013                  | 74,929           | 100,862          | 992,373           | 3,423,135          |                    |                   | 13.24                  | 1.35                 | 9.84                         |                               |
| <b>65+ Years</b>      | <b>384,520</b>   | <b>894,665</b>   | <b>9,793,014</b>  | <b>28,917,706</b>  | <b>9,737,147</b>   | <b>31,273,211</b> | <b>25.47</b>           | <b>2.33</b>          | <b>10.95</b>                 | <b>39.49</b>                  |
| 2000                  | 14,906           | 36,053           | 422,446           | 975,238            |                    |                   | 28.34                  | 2.42                 | 11.72                        |                               |
| 2001                  | 16,789           | 41,153           | 476,946           | 1,103,995          |                    |                   | 28.41                  | 2.45                 | 11.59                        |                               |
| 2002                  | 19,244           | 46,570           | 556,696           | 1,247,214          |                    |                   | 28.93                  | 2.42                 | 11.95                        |                               |
| 2003                  | 20,823           | 50,447           | 625,868           | 1,386,405          |                    |                   | 30.06                  | 2.42                 | 12.41                        |                               |
| 2004                  | 19,307           | 46,023           | 637,294           | 1,889,994          |                    |                   | 33.01                  | 2.38                 | 13.85                        |                               |
| 2005                  | 23,751           | 54,347           | 638,389           | 1,532,464          |                    |                   | 26.88                  | 2.29                 | 11.75                        |                               |
| 2006                  | 22,879           | 35,570           | 391,778           | 1,208,162          |                    |                   | 17.12                  | 1.55                 | 11.01                        |                               |
| 2007                  | 36,343           | 57,135           | 573,853           | 1,834,033          |                    |                   | 15.79                  | 1.57                 | 10.04                        |                               |
| 2008                  | 66,156           | 106,063          | 1,036,357         | 3,362,143          |                    |                   | 15.67                  | 1.60                 | 9.77                         |                               |
| 2009                  | 68,215           | 110,785          | 1,122,558         | 3,639,412          |                    |                   | 16.46                  | 1.62                 | 10.13                        |                               |
| 2010                  | 71,820           | 117,699          | 1,219,021         | 3,943,646          |                    |                   | 16.97                  | 1.64                 | 10.36                        |                               |
| 2011                  | 69,214           | 114,659          | 1,226,729         | 4,006,815          |                    |                   | 17.72                  | 1.66                 | 10.70                        |                               |
| 2012                  | 38,247           | 60,940           | 678,210           | 2,184,984          |                    |                   | 17.73                  | 1.59                 | 11.13                        |                               |
| 2013                  | 13,273           | 17,221           | 186,869           | 603,201            |                    |                   | 14.08                  | 1.30                 | 10.85                        |                               |

|  | Users*       | Dispensings  | Days Supplied | Amount Supplied | Eligible Members** | Member-Years**   | Days Supplied per user | Dispensings per User | Days Supplied per Dispensing | Users per 1K Eligible Members |
|--|--------------|--------------|---------------|-----------------|--------------------|------------------|------------------------|----------------------|------------------------------|-------------------------------|
| <b>Promethazine/Codeine and Promethazine/Phenylephrine/Codeine</b> |              |              |               |                 |                    |                  |                        |                      |                              |                               |
| <b>0 to 5 Months</b>   | <b>268</b>   | <b>286</b>   | <b>6,558</b>  | <b>39,202</b>   | <b>3,662,644</b>   | <b>1,589,292</b> | <b>24.47</b>           | <b>1.07</b>          | <b>22.93</b>                 | <b>0.07</b>                   |
| 2000   | 54           | 55           | 1,523         | 8,282           |                    |                  | 28.20                  | 1.02                 | 27.69                        |                               |
| 2001   | 31           | 32           | 1,145         | 4,384           |                    |                  | 36.94                  | 1.03                 | 35.78                        |                               |
| 2002   | 35           | 37           | 837           | 5,764           |                    |                  | 23.91                  | 1.06                 | 22.62                        |                               |
| 2003   | 24           | 27           | 609           | 4,331           |                    |                  | 25.38                  | 1.13                 | 22.56                        |                               |
| 2004   | 48           | 51           | 1,118         | 6,313           |                    |                  | 23.29                  | 1.06                 | 21.92                        |                               |
| 2005   | 22           | 22           | 492           | 2,908           |                    |                  | 22.36                  | 1.00                 | 22.36                        |                               |
| 2006   | 17           | 17           | 217           | 2,238           |                    |                  | 12.76                  | 1.00                 | 12.76                        |                               |
| 2007   | 6            | 6            | 78            | 630             |                    |                  | 13.00                  | 1.00                 | 13.00                        |                               |
| 2008   | 11           | 14           | 188           | 1,708           |                    |                  | 17.09                  | 1.27                 | 13.43                        |                               |
| 2009   | 8            | 9            | 103           | 807             |                    |                  | 12.88                  | 1.13                 | 11.44                        |                               |
| 2010   | 4            | 5            | 109           | 600             |                    |                  | 27.25                  | 1.25                 | 21.80                        |                               |
| 2011   | 5            | 5            | 74            | 505             |                    |                  | 14.80                  | 1.00                 | 14.80                        |                               |
| 2012   | 6            | 6            | 65            | 732             |                    |                  | 10.83                  | 1.00                 | 10.83                        |                               |
| 2013   | 0            | 0            | 0             | 0               |                    |                  | #DIV/0!                | #DIV/0!              | #DIV/0!                      |                               |
| <b>6 to 11 Months</b>  | <b>1,680</b> | <b>1,799</b> | <b>55,480</b> | <b>251,192</b>  | <b>3,587,212</b>   | <b>1,697,810</b> | <b>33.02</b>           | <b>1.07</b>          | <b>30.84</b>                 | <b>0.47</b>                   |
| 2000   | 257          | 279          | 13,095        | 42,011          |                    |                  | 50.95                  | 1.09                 | 46.94                        |                               |
| 2001   | 259          | 278          | 9,753         | 41,871          |                    |                  | 37.66                  | 1.07                 | 35.08                        |                               |
| 2002   | 236          | 249          | 8,706         | 35,970          |                    |                  | 36.89                  | 1.06                 | 34.96                        |                               |
| 2003   | 213          | 223          | 7,390         | 35,174          |                    |                  | 34.69                  | 1.05                 | 33.14                        |                               |
| 2004   | 310          | 326          | 8,599         | 44,787          |                    |                  | 27.74                  | 1.05                 | 26.38                        |                               |
| 2005   | 158          | 164          | 3,602         | 20,017          |                    |                  | 22.80                  | 1.04                 | 21.96                        |                               |
| 2006   | 63           | 66           | 959           | 7,233           |                    |                  | 15.22                  | 1.05                 | 14.53                        |                               |
| 2007   | 26           | 27           | 458           | 3,195           |                    |                  | 17.62                  | 1.04                 | 16.96                        |                               |
| 2008   | 62           | 64           | 970           | 7,125           |                    |                  | 15.65                  | 1.03                 | 15.16                        |                               |
| 2009   | 39           | 40           | 695           | 4,059           |                    |                  | 17.82                  | 1.03                 | 17.38                        |                               |
| 2010   | 30           | 31           | 478           | 3,670           |                    |                  | 15.93                  | 1.03                 | 15.42                        |                               |
| 2011   | 25           | 26           | 404           | 3,050           |                    |                  | 16.16                  | 1.04                 | 15.54                        |                               |
| 2012   | 18           | 20           | 285           | 2,070           |                    |                  | 15.83                  | 1.11                 | 14.25                        |                               |
| 2013   | 6            | 6            | 86            | 960             |                    |                  | 14.33                  | 1.00                 | 14.33                        |                               |

|                        | Users*        | Dispensings   | Days Supplied    | Amount Supplied   | Eligible Members** | Member-Years**    | Days Supplied per user | Dispensings per User | Days Supplied per Dispensing | Users per 1K Eligible Members |
|------------------------|---------------|---------------|------------------|-------------------|--------------------|-------------------|------------------------|----------------------|------------------------------|-------------------------------|
| <b>12 to 23 Months</b> | <b>8,875</b>  | <b>9,941</b>  | <b>304,328</b>   | <b>1,415,645</b>  | <b>4,444,514</b>   | <b>3,527,210</b>  | <b>34.29</b>           | <b>1.12</b>          | <b>30.61</b>                 | <b>2.00</b>                   |
| 2000                   | 1,312         | 1,417         | 70,345           | 221,115           |                    |                   | 53.62                  | 1.08                 | 49.64                        |                               |
| 2001                   | 1,246         | 1,370         | 52,062           | 205,475           |                    |                   | 41.78                  | 1.10                 | 38.00                        |                               |
| 2002                   | 1,194         | 1,308         | 43,876           | 204,252           |                    |                   | 36.75                  | 1.10                 | 33.54                        |                               |
| 2003                   | 1,236         | 1,322         | 44,161           | 206,608           |                    |                   | 35.73                  | 1.07                 | 33.40                        |                               |
| 2004                   | 1,370         | 1,501         | 38,404           | 211,285           |                    |                   | 28.03                  | 1.10                 | 25.59                        |                               |
| 2005                   | 858           | 932           | 21,629           | 128,294           |                    |                   | 25.21                  | 1.09                 | 23.21                        |                               |
| 2006                   | 414           | 440           | 7,947            | 53,298            |                    |                   | 19.20                  | 1.06                 | 18.06                        |                               |
| 2007                   | 199           | 208           | 3,586            | 24,897            |                    |                   | 18.02                  | 1.05                 | 17.24                        |                               |
| 2008                   | 495           | 538           | 8,353            | 61,705            |                    |                   | 16.87                  | 1.09                 | 15.53                        |                               |
| 2009                   | 272           | 294           | 4,493            | 31,892            |                    |                   | 16.52                  | 1.08                 | 15.28                        |                               |
| 2010                   | 203           | 213           | 3,377            | 24,483            |                    |                   | 16.64                  | 1.05                 | 15.85                        |                               |
| 2011                   | 188           | 198           | 3,084            | 20,887            |                    |                   | 16.40                  | 1.05                 | 15.58                        |                               |
| 2012                   | 143           | 159           | 2,410            | 17,123            |                    |                   | 16.85                  | 1.11                 | 15.16                        |                               |
| 2013                   | 39            | 41            | 601              | 4,331             |                    |                   | 15.41                  | 1.05                 | 14.66                        |                               |
| <b>2 to 4 Years</b>    | <b>69,419</b> | <b>88,458</b> | <b>2,063,075</b> | <b>12,695,466</b> | <b>7,402,184</b>   | <b>11,291,676</b> | <b>29.72</b>           | <b>1.27</b>          | <b>23.32</b>                 | <b>9.38</b>                   |
| 2000                   | 5,964         | 6,751         | 295,291          | 1,089,259         |                    |                   | 49.51                  | 1.13                 | 43.74                        |                               |
| 2001                   | 5,999         | 6,810         | 247,361          | 1,095,101         |                    |                   | 41.23                  | 1.14                 | 36.32                        |                               |
| 2002                   | 6,050         | 6,895         | 233,353          | 1,125,073         |                    |                   | 38.57                  | 1.14                 | 33.84                        |                               |
| 2003                   | 6,834         | 7,777         | 257,112          | 1,282,302         |                    |                   | 37.62                  | 1.14                 | 33.06                        |                               |
| 2004                   | 5,953         | 6,751         | 157,846          | 1,072,035         |                    |                   | 26.52                  | 1.13                 | 23.38                        |                               |
| 2005                   | 5,808         | 6,565         | 143,653          | 1,024,433         |                    |                   | 24.73                  | 1.13                 | 21.88                        |                               |
| 2006                   | 9,387         | 10,658        | 187,189          | 1,488,309         |                    |                   | 19.94                  | 1.14                 | 17.56                        |                               |
| 2007                   | 6,746         | 7,597         | 121,534          | 1,004,315         |                    |                   | 18.02                  | 1.13                 | 16.00                        |                               |
| 2008                   | 9,349         | 10,442        | 157,881          | 1,324,160         |                    |                   | 16.89                  | 1.12                 | 15.12                        |                               |
| 2009                   | 6,702         | 7,518         | 108,428          | 927,015           |                    |                   | 16.18                  | 1.12                 | 14.42                        |                               |
| 2010                   | 3,758         | 4,278         | 62,914           | 512,764           |                    |                   | 16.74                  | 1.14                 | 14.71                        |                               |
| 2011                   | 2,964         | 3,336         | 48,286           | 395,608           |                    |                   | 16.29                  | 1.13                 | 14.47                        |                               |
| 2012                   | 2,074         | 2,311         | 31,528           | 267,355           |                    |                   | 15.20                  | 1.11                 | 13.64                        |                               |
| 2013                   | 717           | 769           | 10,699           | 87,737            |                    |                   | 14.92                  | 1.07                 | 13.91                        |                               |



|                       | Users*         | Dispensings    | Days Supplied    | Amount Supplied   | Eligible Members** | Member-Years**    | Days Supplied per user | Dispensings per User | Days Supplied per Dispensing | Users per 1K Eligible Members |
|-----------------------|----------------|----------------|------------------|-------------------|--------------------|-------------------|------------------------|----------------------|------------------------------|-------------------------------|
| <b>5 to 9 Years</b>   | <b>125,365</b> | <b>161,212</b> | <b>2,889,368</b> | <b>25,005,396</b> | <b>10,477,293</b>  | <b>19,855,060</b> | <b>23.05</b>           | <b>1.29</b>          | <b>17.92</b>                 | <b>11.97</b>                  |
| 2000                  | 8,329          | 9,449          | 350,300          | 1,641,509         |                    |                   | 42.06                  | 1.13                 | 37.07                        |                               |
| 2001                  | 8,374          | 9,490          | 299,874          | 1,650,842         |                    |                   | 35.81                  | 1.13                 | 31.60                        |                               |
| 2002                  | 8,132          | 9,147          | 274,266          | 1,594,875         |                    |                   | 33.73                  | 1.12                 | 29.98                        |                               |
| 2003                  | 9,328          | 10,364         | 299,955          | 1,846,941         |                    |                   | 32.16                  | 1.11                 | 28.94                        |                               |
| 2004                  | 7,500          | 8,440          | 156,348          | 1,450,304         |                    |                   | 20.85                  | 1.13                 | 18.52                        |                               |
| 2005                  | 9,214          | 10,371         | 187,938          | 1,786,472         |                    |                   | 20.40                  | 1.13                 | 18.12                        |                               |
| 2006                  | 14,381         | 16,099         | 232,023          | 2,535,247         |                    |                   | 16.13                  | 1.12                 | 14.41                        |                               |
| 2007                  | 11,982         | 13,411         | 176,088          | 2,028,340         |                    |                   | 14.70                  | 1.12                 | 13.13                        |                               |
| 2008                  | 19,064         | 21,180         | 258,481          | 3,147,650         |                    |                   | 13.56                  | 1.11                 | 12.20                        |                               |
| 2009                  | 17,832         | 20,044         | 240,902          | 2,807,285         |                    |                   | 13.51                  | 1.12                 | 12.02                        |                               |
| 2010                  | 10,554         | 11,852         | 148,541          | 1,636,900         |                    |                   | 14.07                  | 1.12                 | 12.53                        |                               |
| 2011                  | 9,399          | 10,447         | 130,739          | 1,422,129         |                    |                   | 13.91                  | 1.11                 | 12.51                        |                               |
| 2012                  | 6,959          | 7,729          | 95,524           | 1,031,055         |                    |                   | 13.73                  | 1.11                 | 12.36                        |                               |
| 2013                  | 3,015          | 3,189          | 38,389           | 425,847           |                    |                   | 12.73                  | 1.06                 | 12.04                        |                               |
| <b>10 to 17 Years</b> | <b>223,235</b> | <b>282,112</b> | <b>3,622,912</b> | <b>48,350,886</b> | <b>15,005,187</b>  | <b>33,943,372</b> | <b>16.23</b>           | <b>1.26</b>          | <b>12.84</b>                 | <b>14.88</b>                  |
| 2000                  | 9,578          | 10,784         | 320,648          | 2,030,076         |                    |                   | 33.48                  | 1.13                 | 29.73                        |                               |
| 2001                  | 10,457         | 11,730         | 305,509          | 2,178,205         |                    |                   | 29.22                  | 1.12                 | 26.05                        |                               |
| 2002                  | 10,992         | 12,294         | 312,061          | 2,298,801         |                    |                   | 28.39                  | 1.12                 | 25.38                        |                               |
| 2003                  | 13,749         | 15,350         | 358,897          | 2,936,117         |                    |                   | 26.10                  | 1.12                 | 23.38                        |                               |
| 2004                  | 9,123          | 10,145         | 136,162          | 1,896,815         |                    |                   | 14.93                  | 1.11                 | 13.42                        |                               |
| 2005                  | 12,246         | 13,694         | 183,273          | 2,564,171         |                    |                   | 14.97                  | 1.12                 | 13.38                        |                               |
| 2006                  | 21,323         | 23,532         | 262,241          | 4,195,555         |                    |                   | 12.30                  | 1.10                 | 11.14                        |                               |
| 2007                  | 16,454         | 18,195         | 182,956          | 3,115,843         |                    |                   | 11.12                  | 1.11                 | 10.06                        |                               |
| 2008                  | 33,639         | 37,312         | 349,720          | 6,143,775         |                    |                   | 10.40                  | 1.11                 | 9.37                         |                               |
| 2009                  | 43,210         | 48,147         | 441,997          | 8,001,331         |                    |                   | 10.23                  | 1.11                 | 9.18                         |                               |
| 2010                  | 23,885         | 26,672         | 256,208          | 4,350,170         |                    |                   | 10.73                  | 1.12                 | 9.61                         |                               |
| 2011                  | 22,799         | 25,295         | 239,362          | 4,074,755         |                    |                   | 10.50                  | 1.11                 | 9.46                         |                               |
| 2012                  | 17,670         | 19,477         | 182,749          | 3,067,598         |                    |                   | 10.34                  | 1.10                 | 9.38                         |                               |
| 2013                  | 8,996          | 9,485          | 91,129           | 1,497,674         |                    |                   | 10.13                  | 1.05                 | 9.61                         |                               |

|                       | Users*           | Dispensings      | Days Supplied     | Amount Supplied    | Eligible Members** | Member-Years**     | Days Supplied per user | Dispensings per User | Days Supplied per Dispensing | Users per 1K Eligible Members |
|-----------------------|------------------|------------------|-------------------|--------------------|--------------------|--------------------|------------------------|----------------------|------------------------------|-------------------------------|
| <b>18 to 44 Years</b> | <b>1,367,453</b> | <b>1,897,675</b> | <b>19,002,539</b> | <b>355,818,661</b> | <b>54,077,095</b>  | <b>116,008,745</b> | <b>13.90</b>           | <b>1.39</b>          | <b>10.01</b>                 | <b>25.29</b>                  |
| 2000                  | 50,253           | 60,304           | 1,148,921         | 12,198,776         |                    |                    | 22.86                  | 1.20                 | 19.05                        |                               |
| 2001                  | 52,739           | 62,718           | 1,185,664         | 12,820,337         |                    |                    | 22.48                  | 1.19                 | 18.90                        |                               |
| 2002                  | 48,988           | 58,310           | 1,074,729         | 12,010,153         |                    |                    | 21.94                  | 1.19                 | 18.43                        |                               |
| 2003                  | 55,109           | 65,537           | 1,112,985         | 13,609,745         |                    |                    | 20.20                  | 1.19                 | 16.98                        |                               |
| 2004                  | 45,632           | 54,639           | 522,917           | 11,358,846         |                    |                    | 11.46                  | 1.20                 | 9.57                         |                               |
| 2005                  | 59,678           | 70,573           | 679,411           | 14,831,933         |                    |                    | 11.38                  | 1.18                 | 9.63                         |                               |
| 2006                  | 102,932          | 121,137          | 1,087,347         | 24,528,238         |                    |                    | 10.56                  | 1.18                 | 8.98                         |                               |
| 2007                  | 88,550           | 104,229          | 903,812           | 20,609,968         |                    |                    | 10.21                  | 1.18                 | 8.67                         |                               |
| 2008                  | 248,677          | 289,580          | 2,455,495         | 53,352,531         |                    |                    | 9.87                   | 1.16                 | 8.48                         |                               |
| 2009                  | 259,735          | 305,370          | 2,602,623         | 55,691,496         |                    |                    | 10.02                  | 1.18                 | 8.52                         |                               |
| 2010                  | 189,285          | 222,045          | 1,941,831         | 39,971,151         |                    |                    | 10.26                  | 1.17                 | 8.75                         |                               |
| 2011                  | 185,064          | 215,955          | 1,910,387         | 38,217,434         |                    |                    | 10.32                  | 1.17                 | 8.85                         |                               |
| 2012                  | 154,832          | 180,100          | 1,601,601         | 31,445,725         |                    |                    | 10.34                  | 1.16                 | 8.89                         |                               |
| 2013                  | 79,661           | 87,178           | 774,816           | 15,172,328         |                    |                    | 9.73                   | 1.09                 | 8.89                         |                               |
| <b>45 to 64 Years</b> | <b>1,139,677</b> | <b>1,939,825</b> | <b>19,620,482</b> | <b>382,361,914</b> | <b>31,931,924</b>  | <b>86,087,673</b>  | <b>17.22</b>           | <b>1.70</b>          | <b>10.11</b>                 | <b>35.69</b>                  |
| 2000                  | 42,538           | 57,918           | 1,127,142         | 12,169,971         |                    |                    | 26.50                  | 1.36                 | 19.46                        |                               |
| 2001                  | 44,653           | 60,223           | 1,148,012         | 12,714,562         |                    |                    | 25.71                  | 1.35                 | 19.06                        |                               |
| 2002                  | 43,715           | 59,364           | 1,120,699         | 12,650,502         |                    |                    | 25.64                  | 1.36                 | 18.88                        |                               |
| 2003                  | 48,029           | 65,362           | 1,109,786         | 14,087,887         |                    |                    | 23.11                  | 1.36                 | 16.98                        |                               |
| 2004                  | 45,195           | 61,825           | 598,146           | 13,473,122         |                    |                    | 13.23                  | 1.37                 | 9.67                         |                               |
| 2005                  | 56,360           | 76,122           | 731,696           | 16,798,696         |                    |                    | 12.98                  | 1.35                 | 9.61                         |                               |
| 2006                  | 95,395           | 126,850          | 1,142,160         | 26,997,446         |                    |                    | 11.97                  | 1.33                 | 9.00                         |                               |
| 2007                  | 82,281           | 109,770          | 954,911           | 22,762,901         |                    |                    | 11.61                  | 1.33                 | 8.70                         |                               |
| 2008                  | 215,853          | 280,327          | 2,411,284         | 54,171,049         |                    |                    | 11.17                  | 1.30                 | 8.60                         |                               |
| 2009                  | 215,548          | 282,223          | 2,456,599         | 54,350,618         |                    |                    | 11.40                  | 1.31                 | 8.70                         |                               |
| 2010                  | 181,430          | 235,926          | 2,088,628         | 44,861,341         |                    |                    | 11.51                  | 1.30                 | 8.85                         |                               |
| 2011                  | 176,794          | 227,846          | 2,049,420         | 42,695,362         |                    |                    | 11.59                  | 1.29                 | 8.99                         |                               |
| 2012                  | 153,525          | 195,528          | 1,779,206         | 36,224,668         |                    |                    | 11.59                  | 1.27                 | 9.10                         |                               |
| 2013                  | 86,666           | 100,541          | 902,793           | 18,403,789         |                    |                    | 10.42                  | 1.16                 | 8.98                         |                               |

|                  | Users*         | Dispensings    | Days Supplied    | Amount Supplied    | Eligible Members** | Member-Years**    | Days Supplied per user | Dispensings per User | Days Supplied per Dispensing | Users per 1K Eligible Members |
|------------------|----------------|----------------|------------------|--------------------|--------------------|-------------------|------------------------|----------------------|------------------------------|-------------------------------|
| <b>65+ Years</b> | <b>285,354</b> | <b>570,775</b> | <b>6,629,049</b> | <b>119,186,410</b> | <b>9,737,147</b>   | <b>31,273,211</b> | <b>23.23</b>           | <b>2.00</b>          | <b>11.61</b>                 | <b>29.31</b>                  |
| 2000             | 19,504         | 29,615         | 617,584          | 6,570,465          |                    |                   | 31.66                  | 1.52                 | 20.85                        |                               |
| 2001             | 21,316         | 32,621         | 662,130          | 7,277,378          |                    |                   | 31.06                  | 1.53                 | 20.30                        |                               |
| 2002             | 21,401         | 32,672         | 641,611          | 7,323,965          |                    |                   | 29.98                  | 1.53                 | 19.64                        |                               |
| 2003             | 22,970         | 34,877         | 633,407          | 7,837,211          |                    |                   | 27.58                  | 1.52                 | 18.16                        |                               |
| 2004             | 21,697         | 33,213         | 338,819          | 7,602,378          |                    |                   | 15.62                  | 1.53                 | 10.20                        |                               |
| 2005             | 25,348         | 37,952         | 380,708          | 8,766,328          |                    |                   | 15.02                  | 1.50                 | 10.03                        |                               |
| 2006             | 27,633         | 41,435         | 402,264          | 9,555,468          |                    |                   | 14.56                  | 1.50                 | 9.71                         |                               |
| 2007             | 18,868         | 26,896         | 248,489          | 5,798,766          |                    |                   | 13.17                  | 1.43                 | 9.24                         |                               |
| 2008             | 43,117         | 60,361         | 526,154          | 11,847,517         |                    |                   | 12.20                  | 1.40                 | 8.72                         |                               |
| 2009             | 41,997         | 59,362         | 525,850          | 11,636,560         |                    |                   | 12.52                  | 1.41                 | 8.86                         |                               |
| 2010             | 39,938         | 55,991         | 502,793          | 10,882,211         |                    |                   | 12.59                  | 1.40                 | 8.98                         |                               |
| 2011             | 38,285         | 53,212         | 486,457          | 10,307,643         |                    |                   | 12.71                  | 1.39                 | 9.14                         |                               |
| 2012             | 35,665         | 49,046         | 451,118          | 9,406,159          |                    |                   | 12.65                  | 1.38                 | 9.20                         |                               |
| 2013             | 19,570         | 23,522         | 211,665          | 4,374,361          |                    |                   | 10.82                  | 1.20                 | 9.00                         |                               |

\*The number of prevalent promethazine users by year will add up to more than the total because the same individual may be a promethazine user in more than one year.

\*\*Denominator data are not available within each individual age group-year strata.

**Table 5b. Summary of Incident Promethazine Use in the Mni-Sentinel Distributed Database (MSDD) between January 1, 2000 and May 31, 2013, by Drug Product, Age Group, and Year**

|                                   | New Users    | Dispensings  | Days Supplied | Amount Supplied | Eligible Members* | Member-Years*    | Days Supplied | Dispensings per User | Days Supplied | New Users per 1K Eligible |
|-----------------------------------|--------------|--------------|---------------|-----------------|-------------------|------------------|---------------|----------------------|---------------|---------------------------|
| <b>Promethazine (Liquid Only)</b> |              |              |               |                 |                   |                  |               |                      |               |                           |
| <b>0 to 5 Months</b>              | <b>16</b>    | <b>16</b>    | <b>96</b>     | <b>1,253</b>    | <b>531,171</b>    | <b>1,840</b>     | <b>6.00</b>   | <b>1.00</b>          | <b>6.00</b>   | <b>0.03</b>               |
| 2000                              | 1            | 1            | 7             | 120             |                   |                  | 7.00          | 1.00                 | 7.00          |                           |
| 2001                              | 1            | 1            | 3             | 90              |                   |                  | 3.00          | 1.00                 | 3.00          |                           |
| 2002                              | 3            | 3            | 16            | 180             |                   |                  | 5.33          | 1.00                 | 5.33          |                           |
| 2003                              | 2            | 2            | 8             | 180             |                   |                  | 4.00          | 1.00                 | 4.00          |                           |
| 2004                              | 0            | 0            | 0             | 0               |                   |                  | ---           | ---                  | ---           |                           |
| 2005                              | 3            | 3            | 29            | 183             |                   |                  | 9.67          | 1.00                 | 9.67          |                           |
| 2006                              | 1            | 1            | 3             | 30              |                   |                  | 3.00          | 1.00                 | 3.00          |                           |
| 2007                              | 0            | 0            | 0             | 0               |                   |                  | ---           | ---                  | ---           |                           |
| 2008                              | 3            | 3            | 21            | 260             |                   |                  | 7.00          | 1.00                 | 7.00          |                           |
| 2009                              | 1            | 1            | 5             | 150             |                   |                  | 5.00          | 1.00                 | 5.00          |                           |
| 2010                              | 0            | 0            | 0             | 0               |                   |                  | ---           | ---                  | ---           |                           |
| 2011                              | 1            | 1            | 4             | 60              |                   |                  | 4.00          | 1.00                 | 4.00          |                           |
| 2012                              | 0            | 0            | 0             | 0               |                   |                  | ---           | ---                  | ---           |                           |
| 2013                              | 0            | 0            | 0             | 0               |                   |                  | ---           | ---                  | ---           |                           |
| <b>6 to 11 Months</b>             | <b>4,093</b> | <b>4,146</b> | <b>39,135</b> | <b>395,640</b>  | <b>2,780,844</b>  | <b>1,255,937</b> | <b>9.56</b>   | <b>1.01</b>          | <b>9.44</b>   | <b>1.47</b>               |
| 2000                              | 279          | 281          | 2,547         | 27,338          |                   |                  | 9.13          | 1.01                 | 9.06          |                           |
| 2001                              | 713          | 715          | 6,844         | 67,595          |                   |                  | 9.60          | 1.00                 | 9.57          |                           |
| 2002                              | 734          | 750          | 7,831         | 72,147          |                   |                  | 10.67         | 1.02                 | 10.44         |                           |
| 2003                              | 751          | 751          | 7,312         | 69,118          |                   |                  | 9.74          | 1.00                 | 9.74          |                           |
| 2004                              | 483          | 500          | 5,302         | 54,240          |                   |                  | 10.98         | 1.04                 | 10.60         |                           |
| 2005                              | 436          | 446          | 3,619         | 44,097          |                   |                  | 8.30          | 1.02                 | 8.11          |                           |
| 2006                              | 208          | 212          | 1,614         | 18,307          |                   |                  | 7.76          | 1.02                 | 7.61          |                           |
| 2007                              | 124          | 124          | 892           | 10,430          |                   |                  | 7.19          | 1.00                 | 7.19          |                           |
| 2008                              | 119          | 121          | 997           | 11,485          |                   |                  | 8.38          | 1.02                 | 8.24          |                           |
| 2009                              | 91           | 91           | 774           | 8,321           |                   |                  | 8.51          | 1.00                 | 8.51          |                           |
| 2010                              | 73           | 73           | 687           | 6,550           |                   |                  | 9.41          | 1.00                 | 9.41          |                           |
| 2011                              | 51           | 51           | 426           | 3,657           |                   |                  | 8.35          | 1.00                 | 8.35          |                           |
| 2012                              | 19           | 19           | 175           | 1,467           |                   |                  | 9.21          | 1.00                 | 9.21          |                           |
| 2013                              | 12           | 12           | 115           | 888             |                   |                  | 9.58          | 1.00                 | 9.58          |                           |

|                        | New Users     | Dispensings   | Days Supplied  | Amount Supplied  | Eligible Members* | Member-Years*    | Days Supplied | Dispensings per User | Days Supplied | New Users per 1K Eligible |
|------------------------|---------------|---------------|----------------|------------------|-------------------|------------------|---------------|----------------------|---------------|---------------------------|
| <b>12 to 23 Months</b> | <b>10,182</b> | <b>10,263</b> | <b>94,680</b>  | <b>1,128,880</b> | <b>3,538,569</b>  | <b>2,745,433</b> | <b>9.30</b>   | <b>1.01</b>          | <b>9.23</b>   | <b>2.88</b>               |
| 2000                   | 597           | 598           | 6,415          | 66,466           |                   |                  | 10.75         | 1.00                 | 10.73         |                           |
| 2001                   | 1,480         | 1,487         | 16,796         | 158,863          |                   |                  | 11.35         | 1.00                 | 11.30         |                           |
| 2002                   | 1,589         | 1,600         | 17,095         | 171,847          |                   |                  | 10.76         | 1.01                 | 10.68         |                           |
| 2003                   | 1,461         | 1,473         | 14,385         | 152,980          |                   |                  | 9.85          | 1.01                 | 9.77          |                           |
| 2004                   | 866           | 888           | 8,096          | 173,822          |                   |                  | 9.35          | 1.03                 | 9.12          |                           |
| 2005                   | 912           | 924           | 6,797          | 93,064           |                   |                  | 7.45          | 1.01                 | 7.36          |                           |
| 2006                   | 661           | 672           | 4,883          | 65,618           |                   |                  | 7.39          | 1.02                 | 7.27          |                           |
| 2007                   | 467           | 471           | 3,314          | 46,063           |                   |                  | 7.10          | 1.01                 | 7.04          |                           |
| 2008                   | 545           | 546           | 4,254          | 52,889           |                   |                  | 7.81          | 1.00                 | 7.79          |                           |
| 2009                   | 525           | 525           | 3,952          | 47,311           |                   |                  | 7.53          | 1.00                 | 7.53          |                           |
| 2010                   | 511           | 511           | 3,962          | 48,126           |                   |                  | 7.75          | 1.00                 | 7.75          |                           |
| 2011                   | 343           | 343           | 2,807          | 31,657           |                   |                  | 8.18          | 1.00                 | 8.18          |                           |
| 2012                   | 171           | 171           | 1,571          | 15,486           |                   |                  | 9.19          | 1.00                 | 9.19          |                           |
| 2013                   | 54            | 54            | 353            | 4,688            |                   |                  | 6.54          | 1.00                 | 6.54          |                           |
| <b>2 to 4 Years</b>    | <b>56,233</b> | <b>56,541</b> | <b>420,261</b> | <b>6,127,621</b> | <b>6,000,192</b>  | <b>8,903,735</b> | <b>7.47</b>   | <b>1.01</b>          | <b>7.43</b>   | <b>9.37</b>               |
| 2000                   | 1,805         | 1,813         | 18,570         | 198,562          |                   |                  | 10.29         | 1.00                 | 10.24         |                           |
| 2001                   | 4,085         | 4,110         | 37,555         | 433,439          |                   |                  | 9.19          | 1.01                 | 9.14          |                           |
| 2002                   | 3,580         | 3,628         | 32,403         | 411,178          |                   |                  | 9.05          | 1.01                 | 8.93          |                           |
| 2003                   | 3,628         | 3,650         | 32,118         | 408,137          |                   |                  | 8.85          | 1.01                 | 8.80          |                           |
| 2004                   | 2,064         | 2,137         | 16,452         | 309,855          |                   |                  | 7.97          | 1.04                 | 7.70          |                           |
| 2005                   | 3,203         | 3,241         | 20,608         | 359,481          |                   |                  | 6.43          | 1.01                 | 6.36          |                           |
| 2006                   | 3,752         | 3,783         | 25,604         | 415,815          |                   |                  | 6.82          | 1.01                 | 6.77          |                           |
| 2007                   | 4,396         | 4,415         | 29,916         | 485,185          |                   |                  | 6.81          | 1.00                 | 6.78          |                           |
| 2008                   | 5,817         | 5,850         | 40,382         | 619,411          |                   |                  | 6.94          | 1.01                 | 6.90          |                           |
| 2009                   | 6,899         | 6,910         | 51,508         | 730,525          |                   |                  | 7.47          | 1.00                 | 7.45          |                           |
| 2010                   | 6,011         | 6,011         | 41,716         | 657,015          |                   |                  | 6.94          | 1.00                 | 6.94          |                           |
| 2011                   | 5,584         | 5,584         | 37,963         | 559,760          |                   |                  | 6.80          | 1.00                 | 6.80          |                           |
| 2012                   | 4,507         | 4,507         | 29,259         | 447,702          |                   |                  | 6.49          | 1.00                 | 6.49          |                           |
| 2013                   | 902           | 902           | 6,207          | 91,556           |                   |                  | 6.88          | 1.00                 | 6.88          |                           |



|                       | New Users     | Dispensings   | Days Supplied  | Amount Supplied   | Eligible Members* | Member-Years*     | Days Supplied | Dispensings per User | Days Supplied | New Users per 1K Eligible |
|-----------------------|---------------|---------------|----------------|-------------------|-------------------|-------------------|---------------|----------------------|---------------|---------------------------|
| <b>5 to 9 Years</b>   | <b>81,375</b> | <b>81,789</b> | <b>518,813</b> | <b>10,100,736</b> | <b>8,577,752</b>  | <b>15,690,255</b> | <b>6.38</b>   | <b>1.01</b>          | <b>6.34</b>   | <b>9.49</b>               |
| 2000                  | 2,483         | 2,492         | 20,026         | 287,932           |                   |                   | 8.07          | 1.00                 | 8.04          |                           |
| 2001                  | 5,524         | 5,561         | 43,575         | 641,884           |                   |                   | 7.89          | 1.01                 | 7.84          |                           |
| 2002                  | 4,608         | 4,668         | 37,208         | 593,496           |                   |                   | 8.07          | 1.01                 | 7.97          |                           |
| 2003                  | 4,283         | 4,309         | 31,599         | 571,482           |                   |                   | 7.38          | 1.01                 | 7.33          |                           |
| 2004                  | 2,113         | 2,181         | 14,267         | 431,211           |                   |                   | 6.75          | 1.03                 | 6.54          |                           |
| 2005                  | 3,920         | 3,993         | 22,816         | 500,319           |                   |                   | 5.82          | 1.02                 | 5.71          |                           |
| 2006                  | 4,569         | 4,625         | 27,995         | 596,464           |                   |                   | 6.13          | 1.01                 | 6.05          |                           |
| 2007                  | 6,084         | 6,114         | 37,104         | 803,723           |                   |                   | 6.10          | 1.00                 | 6.07          |                           |
| 2008                  | 8,373         | 8,420         | 50,892         | 1,039,405         |                   |                   | 6.08          | 1.01                 | 6.04          |                           |
| 2009                  | 10,803        | 10,807        | 65,801         | 1,316,520         |                   |                   | 6.09          | 1.00                 | 6.09          |                           |
| 2010                  | 9,610         | 9,610         | 57,259         | 1,116,907         |                   |                   | 5.96          | 1.00                 | 5.96          |                           |
| 2011                  | 8,835         | 8,839         | 52,375         | 1,032,059         |                   |                   | 5.93          | 1.00                 | 5.93          |                           |
| 2012                  | 8,430         | 8,430         | 47,713         | 960,041           |                   |                   | 5.66          | 1.00                 | 5.66          |                           |
| 2013                  | 1,740         | 1,740         | 10,183         | 209,293           |                   |                   | 5.85          | 1.00                 | 5.85          |                           |
| <b>10 to 17 Years</b> | <b>35,344</b> | <b>35,485</b> | <b>236,169</b> | <b>5,440,048</b>  | <b>12,438,283</b> | <b>27,248,480</b> | <b>6.68</b>   | <b>1.00</b>          | <b>6.66</b>   | <b>2.84</b>               |
| 2000                  | 1,161         | 1,169         | 10,437         | 153,944           |                   |                   | 8.99          | 1.01                 | 8.93          |                           |
| 2001                  | 2,518         | 2,533         | 21,470         | 352,162           |                   |                   | 8.53          | 1.01                 | 8.48          |                           |
| 2002                  | 2,136         | 2,155         | 16,597         | 331,498           |                   |                   | 7.77          | 1.01                 | 7.70          |                           |
| 2003                  | 2,144         | 2,158         | 16,955         | 344,314           |                   |                   | 7.91          | 1.01                 | 7.86          |                           |
| 2004                  | 949           | 976           | 6,500          | 198,514           |                   |                   | 6.85          | 1.03                 | 6.66          |                           |
| 2005                  | 1,587         | 1,617         | 9,170          | 242,907           |                   |                   | 5.78          | 1.02                 | 5.67          |                           |
| 2006                  | 1,912         | 1,920         | 11,948         | 309,166           |                   |                   | 6.25          | 1.00                 | 6.22          |                           |
| 2007                  | 2,583         | 2,592         | 16,407         | 410,168           |                   |                   | 6.35          | 1.00                 | 6.33          |                           |
| 2008                  | 3,507         | 3,514         | 21,689         | 542,399           |                   |                   | 6.18          | 1.00                 | 6.17          |                           |
| 2009                  | 5,059         | 5,062         | 31,830         | 776,270           |                   |                   | 6.29          | 1.00                 | 6.29          |                           |
| 2010                  | 3,970         | 3,970         | 24,519         | 605,256           |                   |                   | 6.18          | 1.00                 | 6.18          |                           |
| 2011                  | 3,810         | 3,810         | 23,675         | 578,132           |                   |                   | 6.21          | 1.00                 | 6.21          |                           |
| 2012                  | 3,181         | 3,182         | 19,244         | 469,239           |                   |                   | 6.05          | 1.00                 | 6.05          |                           |
| 2013                  | 827           | 827           | 5,728          | 126,079           |                   |                   | 6.93          | 1.00                 | 6.93          |                           |

|                       | New Users     | Dispensings   | Days Supplied  | Amount Supplied   | Eligible Members* | Member-Years*     | Days Supplied | Dispensings per User | Days Supplied | New Users per 1K Eligible |
|-----------------------|---------------|---------------|----------------|-------------------|-------------------|-------------------|---------------|----------------------|---------------|---------------------------|
| <b>18 to 44 Years</b> | <b>64,080</b> | <b>64,205</b> | <b>606,610</b> | <b>12,837,059</b> | <b>43,096,298</b> | <b>87,858,484</b> | <b>9.47</b>   | <b>1.00</b>          | <b>9.45</b>   | <b>1.49</b>               |
| 2000                  | 2,025         | 2,031         | 30,277         | 362,041           |                   |                   | 14.95         | 1.00                 | 14.91         |                           |
| 2001                  | 4,158         | 4,175         | 63,853         | 753,965           |                   |                   | 15.36         | 1.00                 | 15.29         |                           |
| 2002                  | 3,312         | 3,323         | 55,951         | 627,600           |                   |                   | 16.89         | 1.00                 | 16.84         |                           |
| 2003                  | 2,945         | 2,950         | 44,005         | 562,280           |                   |                   | 14.94         | 1.00                 | 14.92         |                           |
| 2004                  | 1,954         | 1,992         | 16,358         | 444,980           |                   |                   | 8.37          | 1.02                 | 8.21          |                           |
| 2005                  | 2,142         | 2,169         | 16,485         | 492,262           |                   |                   | 7.70          | 1.01                 | 7.60          |                           |
| 2006                  | 3,007         | 3,011         | 21,988         | 647,895           |                   |                   | 7.31          | 1.00                 | 7.30          |                           |
| 2007                  | 4,261         | 4,267         | 31,695         | 887,978           |                   |                   | 7.44          | 1.00                 | 7.43          |                           |
| 2008                  | 7,241         | 7,248         | 53,157         | 1,452,676         |                   |                   | 7.34          | 1.00                 | 7.33          |                           |
| 2009                  | 9,492         | 9,493         | 76,561         | 1,998,269         |                   |                   | 8.07          | 1.00                 | 8.06          |                           |
| 2010                  | 7,310         | 7,312         | 59,294         | 1,435,513         |                   |                   | 8.11          | 1.00                 | 8.11          |                           |
| 2011                  | 7,349         | 7,350         | 61,012         | 1,462,683         |                   |                   | 8.30          | 1.00                 | 8.30          |                           |
| 2012                  | 6,394         | 6,394         | 54,050         | 1,238,693         |                   |                   | 8.45          | 1.00                 | 8.45          |                           |
| 2013                  | 2,490         | 2,490         | 21,924         | 470,224           |                   |                   | 8.80          | 1.00                 | 8.80          |                           |
| <b>45 to 64 Years</b> | <b>56,293</b> | <b>56,352</b> | <b>584,529</b> | <b>11,643,879</b> | <b>27,160,322</b> | <b>70,507,443</b> | <b>10.38</b>  | <b>1.00</b>          | <b>10.37</b>  | <b>2.07</b>               |
| 2000                  | 1,792         | 1,794         | 29,634         | 342,723           |                   |                   | 16.54         | 1.00                 | 16.52         |                           |
| 2001                  | 3,472         | 3,477         | 64,114         | 687,618           |                   |                   | 18.47         | 1.00                 | 18.44         |                           |
| 2002                  | 2,604         | 2,612         | 52,188         | 536,409           |                   |                   | 20.04         | 1.00                 | 19.98         |                           |
| 2003                  | 2,403         | 2,407         | 44,819         | 501,274           |                   |                   | 18.65         | 1.00                 | 18.62         |                           |
| 2004                  | 1,547         | 1,565         | 13,790         | 407,403           |                   |                   | 8.91          | 1.01                 | 8.81          |                           |
| 2005                  | 1,699         | 1,715         | 14,268         | 410,888           |                   |                   | 8.40          | 1.01                 | 8.32          |                           |
| 2006                  | 2,488         | 2,489         | 19,425         | 563,648           |                   |                   | 7.81          | 1.00                 | 7.80          |                           |
| 2007                  | 3,841         | 3,842         | 30,122         | 841,748           |                   |                   | 7.84          | 1.00                 | 7.84          |                           |
| 2008                  | 7,000         | 7,003         | 56,199         | 1,437,878         |                   |                   | 8.03          | 1.00                 | 8.02          |                           |
| 2009                  | 8,333         | 8,334         | 71,462         | 1,688,007         |                   |                   | 8.58          | 1.00                 | 8.57          |                           |
| 2010                  | 6,555         | 6,555         | 57,054         | 1,321,875         |                   |                   | 8.70          | 1.00                 | 8.70          |                           |
| 2011                  | 6,550         | 6,550         | 58,164         | 1,306,049         |                   |                   | 8.88          | 1.00                 | 8.88          |                           |
| 2012                  | 5,532         | 5,532         | 50,397         | 1,109,705         |                   |                   | 9.11          | 1.00                 | 9.11          |                           |
| 2013                  | 2,477         | 2,477         | 22,893         | 488,654           |                   |                   | 9.24          | 1.00                 | 9.24          |                           |

|                                   | New Users     | Dispensings   | Days Supplied  | Amount Supplied  | Eligible Members* | Member-Years*     | Days Supplied | Dispensings per User | Days Supplied | New Users per 1K Eligible |
|-----------------------------------|---------------|---------------|----------------|------------------|-------------------|-------------------|---------------|----------------------|---------------|---------------------------|
| <b>65+ Years</b>                  | <b>27,278</b> | <b>27,308</b> | <b>321,335</b> | <b>5,680,340</b> | <b>8,671,238</b>  | <b>26,833,623</b> | <b>11.78</b>  | <b>1.00</b>          | <b>11.77</b>  | <b>3.15</b>               |
| 2000                              | 953           | 955           | 18,037         | 192,035          |                   |                   | 18.93         | 1.00                 | 18.89         |                           |
| 2001                              | 1,978         | 1,982         | 41,732         | 414,485          |                   |                   | 21.10         | 1.00                 | 21.06         |                           |
| 2002                              | 1,581         | 1,583         | 36,181         | 333,322          |                   |                   | 22.88         | 1.00                 | 22.86         |                           |
| 2003                              | 1,396         | 1,399         | 30,980         | 299,124          |                   |                   | 22.19         | 1.00                 | 22.14         |                           |
| 2004                              | 988           | 995           | 9,701          | 225,816          |                   |                   | 9.82          | 1.01                 | 9.75          |                           |
| 2005                              | 970           | 981           | 8,175          | 228,730          |                   |                   | 8.43          | 1.01                 | 8.33          |                           |
| 2006                              | 1,342         | 1,342         | 11,128         | 295,076          |                   |                   | 8.29          | 1.00                 | 8.29          |                           |
| 2007                              | 1,836         | 1,836         | 16,103         | 393,375          |                   |                   | 8.77          | 1.00                 | 8.77          |                           |
| 2008                              | 3,754         | 3,754         | 33,401         | 771,776          |                   |                   | 8.90          | 1.00                 | 8.90          |                           |
| 2009                              | 3,491         | 3,491         | 31,451         | 711,219          |                   |                   | 9.01          | 1.00                 | 9.01          |                           |
| 2010                              | 3,531         | 3,532         | 32,390         | 710,431          |                   |                   | 9.17          | 1.00                 | 9.17          |                           |
| 2011                              | 3,049         | 3,049         | 28,072         | 601,155          |                   |                   | 9.21          | 1.00                 | 9.21          |                           |
| 2012                              | 1,797         | 1,797         | 17,884         | 381,245          |                   |                   | 9.95          | 1.00                 | 9.95          |                           |
| 2013                              | 612           | 612           | 6,100          | 122,551          |                   |                   | 9.97          | 1.00                 | 9.97          |                           |
| <b>Promethazine (Tablet Only)</b> |               |               |                |                  |                   |                   |               |                      |               |                           |
| <b>0 to 5 Months</b>              | <b>6</b>      | <b>6</b>      | <b>22</b>      | <b>71</b>        | <b>531,171</b>    | <b>1,840</b>      | <b>3.67</b>   | <b>1.00</b>          | <b>3.67</b>   | <b>0.01</b>               |
| 2000                              | 0             | 0             | 0              | 0                |                   |                   | ---           | ---                  | ---           |                           |
| 2001                              | 0             | 0             | 0              | 0                |                   |                   | ---           | ---                  | ---           |                           |
| 2002                              | 0             | 0             | 0              | 0                |                   |                   | ---           | ---                  | ---           |                           |
| 2003                              | 1             | 1             | 2              | 5                |                   |                   | 2.00          | 1.00                 | 2.00          |                           |
| 2004                              | 0             | 0             | 0              | 0                |                   |                   | ---           | ---                  | ---           |                           |
| 2005                              | 0             | 0             | 0              | 0                |                   |                   | ---           | ---                  | ---           |                           |
| 2006                              | 0             | 0             | 0              | 0                |                   |                   | ---           | ---                  | ---           |                           |
| 2007                              | 2             | 2             | 7              | 22               |                   |                   | 3.50          | 1.00                 | 3.50          |                           |
| 2008                              | 2             | 2             | 3              | 14               |                   |                   | 1.50          | 1.00                 | 1.50          |                           |
| 2009                              | 0             | 0             | 0              | 0                |                   |                   | ---           | ---                  | ---           |                           |
| 2010                              | 0             | 0             | 0              | 0                |                   |                   | ---           | ---                  | ---           |                           |
| 2011                              | 0             | 0             | 0              | 0                |                   |                   | ---           | ---                  | ---           |                           |
| 2012                              | 0             | 0             | 0              | 0                |                   |                   | ---           | ---                  | ---           |                           |
| 2013                              | 1             | 1             | 10             | 30               |                   |                   | 10.00         | 1.00                 | 10.00         |                           |

|                        | New Users  | Dispensings | Days Supplied | Amount Supplied | Eligible Members* | Member-Years*    | Days Supplied | Dispensings per User | Days Supplied | New Users per 1K Eligible |
|------------------------|------------|-------------|---------------|-----------------|-------------------|------------------|---------------|----------------------|---------------|---------------------------|
| <b>6 to 11 Months</b>  | <b>274</b> | <b>275</b>  | <b>980</b>    | <b>2,992</b>    | <b>2,780,844</b>  | <b>1,255,937</b> | <b>3.58</b>   | <b>1.00</b>          | <b>3.56</b>   | <b>0.10</b>               |
| 2000                   | 1          | 1           | 1             | 3               |                   |                  | 1.00          | 1.00                 | 1.00          |                           |
| 2001                   | 11         | 11          | 29            | 137             |                   |                  | 2.64          | 1.00                 | 2.64          |                           |
| 2002                   | 13         | 13          | 41            | 152             |                   |                  | 3.15          | 1.00                 | 3.15          |                           |
| 2003                   | 24         | 24          | 76            | 352             |                   |                  | 3.17          | 1.00                 | 3.17          |                           |
| 2004                   | 31         | 31          | 127           | 416             |                   |                  | 4.10          | 1.00                 | 4.10          |                           |
| 2005                   | 75         | 75          | 221           | 694             |                   |                  | 2.95          | 1.00                 | 2.95          |                           |
| 2006                   | 24         | 24          | 82            | 174             |                   |                  | 3.42          | 1.00                 | 3.42          |                           |
| 2007                   | 27         | 27          | 129           | 333             |                   |                  | 4.78          | 1.00                 | 4.78          |                           |
| 2008                   | 23         | 23          | 101           | 343             |                   |                  | 4.39          | 1.00                 | 4.39          |                           |
| 2009                   | 14         | 14          | 54            | 116             |                   |                  | 3.86          | 1.00                 | 3.86          |                           |
| 2010                   | 13         | 14          | 51            | 120             |                   |                  | 3.92          | 1.08                 | 3.64          |                           |
| 2011                   | 15         | 15          | 45            | 109             |                   |                  | 3.00          | 1.00                 | 3.00          |                           |
| 2012                   | 1          | 1           | 1             | 10              |                   |                  | 1.00          | 1.00                 | 1.00          |                           |
| 2013                   | 2          | 2           | 22            | 33              |                   |                  | 11.00         | 1.00                 | 11.00         |                           |
| <b>12 to 23 Months</b> | <b>873</b> | <b>884</b>  | <b>3,232</b>  | <b>8,070</b>    | <b>3,540,787</b>  | <b>2,748,314</b> | <b>3.70</b>   | <b>1.01</b>          | <b>3.66</b>   | <b>0.25</b>               |
| 2000                   | 11         | 11          | 42            | 112             |                   |                  | 3.82          | 1.00                 | 3.82          |                           |
| 2001                   | 39         | 39          | 133           | 473             |                   |                  | 3.41          | 1.00                 | 3.41          |                           |
| 2002                   | 31         | 31          | 188           | 567             |                   |                  | 6.06          | 1.00                 | 6.06          |                           |
| 2003                   | 57         | 57          | 248           | 557             |                   |                  | 4.35          | 1.00                 | 4.35          |                           |
| 2004                   | 74         | 75          | 342           | 887             |                   |                  | 4.62          | 1.01                 | 4.56          |                           |
| 2005                   | 179        | 181         | 610           | 1,962           |                   |                  | 3.41          | 1.01                 | 3.37          |                           |
| 2006                   | 92         | 93          | 358           | 695             |                   |                  | 3.89          | 1.01                 | 3.85          |                           |
| 2007                   | 74         | 76          | 270           | 590             |                   |                  | 3.65          | 1.03                 | 3.55          |                           |
| 2008                   | 96         | 98          | 328           | 923             |                   |                  | 3.42          | 1.02                 | 3.35          |                           |
| 2009                   | 73         | 74          | 264           | 411             |                   |                  | 3.62          | 1.01                 | 3.57          |                           |
| 2010                   | 53         | 54          | 142           | 226             |                   |                  | 2.68          | 1.02                 | 2.63          |                           |
| 2011                   | 76         | 77          | 237           | 517             |                   |                  | 3.12          | 1.01                 | 3.08          |                           |
| 2012                   | 15         | 15          | 60            | 113             |                   |                  | 4.00          | 1.00                 | 4.00          |                           |
| 2013                   | 3          | 3           | 10            | 37              |                   |                  | 3.33          | 1.00                 | 3.33          |                           |

|                     | New Users     | Dispensings   | Days Supplied  | Amount Supplied  | Eligible Members* | Member-Years*     | Days Supplied | Dispensings per User | Days Supplied | New Users per 1K Eligible |
|---------------------|---------------|---------------|----------------|------------------|-------------------|-------------------|---------------|----------------------|---------------|---------------------------|
| <b>2 to 4 Years</b> | <b>8,300</b>  | <b>8,404</b>  | <b>29,701</b>  | <b>1,715,039</b> | <b>6,009,594</b>  | <b>8,963,867</b>  | <b>3.58</b>   | <b>1.01</b>          | <b>3.53</b>   | <b>1.38</b>               |
| 2000                | 66            | 66            | 236            | 784              |                   |                   | 3.58          | 1.00                 | 3.58          |                           |
| 2001                | 170           | 174           | 855            | 2,261            |                   |                   | 5.03          | 1.02                 | 4.91          |                           |
| 2002                | 229           | 229           | 858            | 2,212            |                   |                   | 3.75          | 1.00                 | 3.75          |                           |
| 2003                | 267           | 272           | 988            | 2,633            |                   |                   | 3.70          | 1.02                 | 3.63          |                           |
| 2004                | 249           | 260           | 1,085          | 2,777            |                   |                   | 4.36          | 1.04                 | 4.17          |                           |
| 2005                | 572           | 589           | 2,088          | 5,627            |                   |                   | 3.65          | 1.03                 | 3.54          |                           |
| 2006                | 534           | 543           | 2,027          | 4,711            |                   |                   | 3.80          | 1.02                 | 3.73          |                           |
| 2007                | 845           | 851           | 2,660          | 1,652,543        |                   |                   | 3.15          | 1.01                 | 3.13          |                           |
| 2008                | 933           | 954           | 3,362          | 8,773            |                   |                   | 3.60          | 1.02                 | 3.52          |                           |
| 2009                | 948           | 956           | 3,505          | 11,591           |                   |                   | 3.70          | 1.01                 | 3.67          |                           |
| 2010                | 790           | 795           | 2,900          | 6,342            |                   |                   | 3.67          | 1.01                 | 3.65          |                           |
| 2011                | 1,553         | 1,564         | 4,851          | 8,555            |                   |                   | 3.12          | 1.01                 | 3.10          |                           |
| 2012                | 1,075         | 1,082         | 3,926          | 5,558            |                   |                   | 3.65          | 1.01                 | 3.63          |                           |
| 2013                | 69            | 69            | 360            | 672              |                   |                   | 5.22          | 1.00                 | 5.22          |                           |
| <b>5 to 9 Years</b> | <b>45,332</b> | <b>45,754</b> | <b>197,083</b> | <b>3,358,754</b> | <b>8,620,658</b>  | <b>15,882,301</b> | <b>4.35</b>   | <b>1.01</b>          | <b>4.31</b>   | <b>5.26</b>               |
| 2000                | 786           | 788           | 3,473          | 11,074           |                   |                   | 4.42          | 1.00                 | 4.41          |                           |
| 2001                | 1,990         | 2,009         | 8,237          | 26,680           |                   |                   | 4.14          | 1.01                 | 4.10          |                           |
| 2002                | 2,061         | 2,084         | 8,680          | 26,146           |                   |                   | 4.21          | 1.01                 | 4.17          |                           |
| 2003                | 2,308         | 2,346         | 9,428          | 29,640           |                   |                   | 4.08          | 1.02                 | 4.02          |                           |
| 2004                | 1,234         | 1,262         | 6,497          | 56,898           |                   |                   | 5.26          | 1.02                 | 5.15          |                           |
| 2005                | 2,628         | 2,727         | 11,482         | 32,532           |                   |                   | 4.37          | 1.04                 | 4.21          |                           |
| 2006                | 2,960         | 3,028         | 13,332         | 36,720           |                   |                   | 4.50          | 1.02                 | 4.40          |                           |
| 2007                | 4,126         | 4,198         | 17,056         | 1,797,295        |                   |                   | 4.13          | 1.02                 | 4.06          |                           |
| 2008                | 5,236         | 5,265         | 22,694         | 1,066,340        |                   |                   | 4.33          | 1.01                 | 4.31          |                           |
| 2009                | 5,793         | 5,809         | 26,682         | 78,835           |                   |                   | 4.61          | 1.00                 | 4.59          |                           |
| 2010                | 5,114         | 5,123         | 23,149         | 64,420           |                   |                   | 4.53          | 1.00                 | 4.52          |                           |
| 2011                | 5,846         | 5,860         | 23,717         | 67,846           |                   |                   | 4.06          | 1.00                 | 4.05          |                           |
| 2012                | 4,605         | 4,610         | 19,211         | 54,043           |                   |                   | 4.17          | 1.00                 | 4.17          |                           |
| 2013                | 645           | 645           | 3,445          | 10,285           |                   |                   | 5.34          | 1.00                 | 5.34          |                           |

|                       | New Users        | Dispensings      | Days Supplied    | Amount Supplied   | Eligible Members* | Member-Years*     | Days Supplied | Dispensings per User | Days Supplied | New Users per 1K Eligible |
|-----------------------|------------------|------------------|------------------|-------------------|-------------------|-------------------|---------------|----------------------|---------------|---------------------------|
| <b>10 to 17 Years</b> | <b>301,647</b>   | <b>302,872</b>   | <b>1,348,909</b> | <b>8,001,654</b>  | <b>12,471,673</b> | <b>27,067,435</b> | <b>4.47</b>   | <b>1.00</b>          | <b>4.45</b>   | <b>24.19</b>              |
| 2000                  | 5,364            | 5,373            | 22,521           | 84,356            |                   |                   | 4.20          | 1.00                 | 4.19          |                           |
| 2001                  | 11,613           | 11,792           | 48,941           | 180,854           |                   |                   | 4.21          | 1.02                 | 4.15          |                           |
| 2002                  | 11,755           | 11,818           | 50,764           | 178,717           |                   |                   | 4.32          | 1.01                 | 4.30          |                           |
| 2003                  | 11,788           | 11,880           | 50,796           | 180,768           |                   |                   | 4.31          | 1.01                 | 4.28          |                           |
| 2004                  | 6,947            | 7,065            | 36,533           | 178,795           |                   |                   | 5.26          | 1.02                 | 5.17          |                           |
| 2005                  | 12,581           | 12,780           | 55,398           | 199,570           |                   |                   | 4.40          | 1.02                 | 4.33          |                           |
| 2006                  | 17,522           | 17,717           | 81,805           | 298,018           |                   |                   | 4.67          | 1.01                 | 4.62          |                           |
| 2007                  | 23,488           | 23,707           | 105,409          | 3,392,393         |                   |                   | 4.49          | 1.01                 | 4.45          |                           |
| 2008                  | 35,235           | 35,323           | 155,650          | 571,377           |                   |                   | 4.42          | 1.00                 | 4.41          |                           |
| 2009                  | 47,668           | 47,690           | 218,114          | 790,132           |                   |                   | 4.58          | 1.00                 | 4.57          |                           |
| 2010                  | 40,789           | 40,803           | 179,556          | 667,868           |                   |                   | 4.40          | 1.00                 | 4.40          |                           |
| 2011                  | 37,071           | 37,083           | 163,582          | 610,850           |                   |                   | 4.41          | 1.00                 | 4.41          |                           |
| 2012                  | 32,553           | 32,566           | 144,923          | 539,208           |                   |                   | 4.45          | 1.00                 | 4.45          |                           |
| 2013                  | 7,273            | 7,275            | 34,917           | 128,748           |                   |                   | 4.80          | 1.00                 | 4.80          |                           |
| <b>18 to 44 Years</b> | <b>1,624,315</b> | <b>1,627,672</b> | <b>8,637,516</b> | <b>35,473,893</b> | <b>42,956,479</b> | <b>85,118,175</b> | <b>5.32</b>   | <b>1.00</b>          | <b>5.31</b>   | <b>37.81</b>              |
| 2000                  | 27,732           | 27,804           | 143,495          | 544,960           |                   |                   | 5.17          | 1.00                 | 5.16          |                           |
| 2001                  | 56,244           | 57,318           | 298,834          | 1,092,550         |                   |                   | 5.31          | 1.02                 | 5.21          |                           |
| 2002                  | 53,003           | 53,197           | 286,955          | 1,023,905         |                   |                   | 5.41          | 1.00                 | 5.39          |                           |
| 2003                  | 46,769           | 46,952           | 255,251          | 918,136           |                   |                   | 5.46          | 1.00                 | 5.44          |                           |
| 2004                  | 37,473           | 37,804           | 240,586          | 1,281,725         |                   |                   | 6.42          | 1.01                 | 6.36          |                           |
| 2005                  | 48,781           | 49,187           | 282,088          | 1,045,823         |                   |                   | 5.78          | 1.01                 | 5.74          |                           |
| 2006                  | 85,800           | 86,155           | 502,023          | 1,943,553         |                   |                   | 5.85          | 1.00                 | 5.83          |                           |
| 2007                  | 124,721          | 125,166          | 684,027          | 3,696,526         |                   |                   | 5.48          | 1.00                 | 5.46          |                           |
| 2008                  | 205,795          | 205,936          | 1,064,360        | 5,106,760         |                   |                   | 5.17          | 1.00                 | 5.17          |                           |
| 2009                  | 269,300          | 269,351          | 1,410,576        | 5,347,018         |                   |                   | 5.24          | 1.00                 | 5.24          |                           |
| 2010                  | 235,072          | 235,103          | 1,209,392        | 4,673,907         |                   |                   | 5.14          | 1.00                 | 5.14          |                           |
| 2011                  | 203,329          | 203,362          | 1,046,946        | 4,097,263         |                   |                   | 5.15          | 1.00                 | 5.15          |                           |
| 2012                  | 177,565          | 177,599          | 934,289          | 3,626,250         |                   |                   | 5.26          | 1.00                 | 5.26          |                           |
| 2013                  | 52,731           | 52,738           | 278,694          | 1,075,517         |                   |                   | 5.29          | 1.00                 | 5.28          |                           |

|                       | New Users      | Dispensings    | Days Supplied    | Amount Supplied   | Eligible Members* | Member-Years*     | Days Supplied | Dispensings per User | Days Supplied | New Users per 1K Eligible |
|-----------------------|----------------|----------------|------------------|-------------------|-------------------|-------------------|---------------|----------------------|---------------|---------------------------|
| <b>45 to 64 Years</b> | <b>998,277</b> | <b>999,518</b> | <b>6,072,090</b> | <b>22,817,271</b> | <b>27,018,951</b> | <b>68,652,665</b> | <b>6.08</b>   | <b>1.00</b>          | <b>6.08</b>   | <b>36.95</b>              |
| 2000                  | 12,652         | 12,689         | 79,194           | 286,094           |                   |                   | 6.26          | 1.00                 | 6.24          |                           |
| 2001                  | 25,990         | 26,313         | 165,868          | 577,414           |                   |                   | 6.38          | 1.01                 | 6.30          |                           |
| 2002                  | 25,447         | 25,546         | 163,224          | 569,957           |                   |                   | 6.41          | 1.00                 | 6.39          |                           |
| 2003                  | 24,302         | 24,391         | 159,236          | 547,315           |                   |                   | 6.55          | 1.00                 | 6.53          |                           |
| 2004                  | 21,277         | 21,486         | 162,418          | 756,427           |                   |                   | 7.63          | 1.01                 | 7.56          |                           |
| 2005                  | 25,363         | 25,532         | 178,461          | 620,888           |                   |                   | 7.04          | 1.01                 | 6.99          |                           |
| 2006                  | 47,194         | 47,269         | 322,862          | 1,211,363         |                   |                   | 6.84          | 1.00                 | 6.83          |                           |
| 2007                  | 73,716         | 73,784         | 458,326          | 1,758,945         |                   |                   | 6.22          | 1.00                 | 6.21          |                           |
| 2008                  | 132,114        | 132,164        | 784,371          | 2,930,864         |                   |                   | 5.94          | 1.00                 | 5.93          |                           |
| 2009                  | 171,751        | 171,779        | 1,024,842        | 3,794,548         |                   |                   | 5.97          | 1.00                 | 5.97          |                           |
| 2010                  | 154,071        | 154,097        | 897,518          | 3,386,258         |                   |                   | 5.83          | 1.00                 | 5.82          |                           |
| 2011                  | 135,280        | 135,306        | 795,967          | 3,036,939         |                   |                   | 5.88          | 1.00                 | 5.88          |                           |
| 2012                  | 113,181        | 113,214        | 669,869          | 2,540,131         |                   |                   | 5.92          | 1.00                 | 5.92          |                           |
| 2013                  | 35,939         | 35,948         | 209,934          | 800,128           |                   |                   | 5.84          | 1.00                 | 5.84          |                           |
| <b>65+ Years</b>      | <b>305,345</b> | <b>305,944</b> | <b>2,117,237</b> | <b>7,354,435</b>  | <b>8,609,311</b>  | <b>26,208,878</b> | <b>6.93</b>   | <b>1.00</b>          | <b>6.92</b>   | <b>35.47</b>              |
| 2000                  | 5,615          | 5,638          | 43,026           | 123,207           |                   |                   | 7.66          | 1.00                 | 7.63          |                           |
| 2001                  | 11,728         | 11,836         | 85,300           | 251,907           |                   |                   | 7.27          | 1.01                 | 7.21          |                           |
| 2002                  | 11,966         | 12,042         | 87,665           | 253,799           |                   |                   | 7.33          | 1.01                 | 7.28          |                           |
| 2003                  | 11,721         | 11,769         | 88,617           | 256,158           |                   |                   | 7.56          | 1.00                 | 7.53          |                           |
| 2004                  | 10,184         | 10,310         | 91,566           | 359,561           |                   |                   | 8.99          | 1.01                 | 8.88          |                           |
| 2005                  | 12,682         | 12,782         | 101,626          | 306,089           |                   |                   | 8.01          | 1.01                 | 7.95          |                           |
| 2006                  | 12,860         | 12,865         | 99,733           | 336,502           |                   |                   | 7.76          | 1.00                 | 7.75          |                           |
| 2007                  | 19,184         | 19,198         | 130,938          | 456,531           |                   |                   | 6.83          | 1.00                 | 6.82          |                           |
| 2008                  | 44,147         | 44,166         | 288,578          | 1,032,717         |                   |                   | 6.54          | 1.00                 | 6.53          |                           |
| 2009                  | 48,916         | 48,938         | 321,844          | 1,154,481         |                   |                   | 6.58          | 1.00                 | 6.58          |                           |
| 2010                  | 46,987         | 47,012         | 308,257          | 1,114,262         |                   |                   | 6.56          | 1.00                 | 6.56          |                           |
| 2011                  | 43,869         | 43,891         | 294,613          | 1,077,405         |                   |                   | 6.72          | 1.00                 | 6.71          |                           |
| 2012                  | 20,480         | 20,490         | 141,114          | 507,492           |                   |                   | 6.89          | 1.00                 | 6.89          |                           |
| 2013                  | 5,006          | 5,007          | 34,360           | 124,324           |                   |                   | 6.86          | 1.00                 | 6.86          |                           |

|  | New Users    | Dispensings  | Days Supplied | Amount Supplied | Eligible Members* | Member-Years*    | Days Supplied | Dispensings per User | Days Supplied | New Users per 1K Eligible |
|--|--------------|--------------|---------------|-----------------|-------------------|------------------|---------------|----------------------|---------------|---------------------------|
| <b>Promethazine/Codeine and Promethazine/Phenylephrine/Codeine</b> |              |              |               |                 |                   |                  |               |                      |               |                           |
| <b>0 to 5 Months</b>   | <b>7</b>     | <b>7</b>     | <b>87</b>     | <b>1,260</b>    | <b>531,171</b>    | <b>1,840</b>     | <b>12.43</b>  | <b>1.00</b>          | <b>12.43</b>  | <b>0.01</b>               |
| 2000   | 0            | 0            | 0             | 0               |                   |                  | ---           | ---                  | ---           |                           |
| 2001   | 0            | 0            | 0             | 0               |                   |                  | ---           | ---                  | ---           |                           |
| 2002   | 0            | 0            | 0             | 0               |                   |                  | ---           | ---                  | ---           |                           |
| 2003   | 0            | 0            | 0             | 0               |                   |                  | ---           | ---                  | ---           |                           |
| 2004   | 0            | 0            | 0             | 0               |                   |                  | ---           | ---                  | ---           |                           |
| 2005   | 0            | 0            | 0             | 0               |                   |                  | ---           | ---                  | ---           |                           |
| 2006   | 2            | 2            | 28            | 480             |                   |                  | 14.00         | 1.00                 | 14.00         |                           |
| 2007   | 2            | 2            | 30            | 180             |                   |                  | 15.00         | 1.00                 | 15.00         |                           |
| 2008   | 0            | 0            | 0             | 0               |                   |                  | ---           | ---                  | ---           |                           |
| 2009   | 0            | 0            | 0             | 0               |                   |                  | ---           | ---                  | ---           |                           |
| 2010   | 1            | 1            | 12            | 180             |                   |                  | 12.00         | 1.00                 | 12.00         |                           |
| 2011   | 1            | 1            | 12            | 120             |                   |                  | 12.00         | 1.00                 | 12.00         |                           |
| 2012   | 1            | 1            | 5             | 300             |                   |                  | 5.00          | 1.00                 | 5.00          |                           |
| 2013   | 0            | 0            | 0             | 0               |                   |                  | ---           | ---                  | ---           |                           |
| <b>6 to 11 Months</b>  | <b>1,162</b> | <b>1,168</b> | <b>32,872</b> | <b>161,997</b>  | <b>2,780,844</b>  | <b>1,255,936</b> | <b>28.29</b>  | <b>1.01</b>          | <b>28.14</b>  | <b>0.42</b>               |
| 2000   | 80           | 83           | 2,810         | 12,569          |                   |                  | 35.13         | 1.04                 | 33.86         |                           |
| 2001   | 200          | 201          | 6,613         | 29,115          |                   |                  | 33.07         | 1.01                 | 32.90         |                           |
| 2002   | 190          | 190          | 6,272         | 27,310          |                   |                  | 33.01         | 1.00                 | 33.01         |                           |
| 2003   | 164          | 164          | 5,440         | 26,326          |                   |                  | 33.17         | 1.00                 | 33.17         |                           |
| 2004   | 212          | 212          | 5,835         | 29,697          |                   |                  | 27.52         | 1.00                 | 27.52         |                           |
| 2005   | 131          | 132          | 2,931         | 16,332          |                   |                  | 22.37         | 1.01                 | 22.20         |                           |
| 2006   | 42           | 43           | 656           | 4,780           |                   |                  | 15.62         | 1.02                 | 15.26         |                           |
| 2007   | 19           | 19           | 285           | 2,100           |                   |                  | 15.00         | 1.00                 | 15.00         |                           |
| 2008   | 31           | 31           | 509           | 3,484           |                   |                  | 16.42         | 1.00                 | 16.42         |                           |
| 2009   | 34           | 34           | 596           | 3,299           |                   |                  | 17.53         | 1.00                 | 17.53         |                           |
| 2010   | 24           | 24           | 406           | 3,010           |                   |                  | 16.92         | 1.00                 | 16.92         |                           |
| 2011   | 18           | 18           | 286           | 2,070           |                   |                  | 15.89         | 1.00                 | 15.89         |                           |
| 2012   | 12           | 12           | 161           | 1,125           |                   |                  | 13.42         | 1.00                 | 13.42         |                           |
| 2013   | 5            | 5            | 72            | 780             |                   |                  | 14.40         | 1.00                 | 14.40         |                           |



|                        | New Users     | Dispensings   | Days Supplied    | Amount Supplied  | Eligible Members* | Member-Years*    | Days Supplied | Dispensings per User | Days Supplied | New Users per 1K Eligible |
|------------------------|---------------|---------------|------------------|------------------|-------------------|------------------|---------------|----------------------|---------------|---------------------------|
| <b>12 to 23 Months</b> | <b>6,473</b>  | <b>6,487</b>  | <b>194,758</b>   | <b>923,531</b>   | <b>3,540,303</b>  | <b>2,747,561</b> | <b>30.09</b>  | <b>1.00</b>          | <b>30.02</b>  | <b>1.83</b>               |
| 2000                   | 516           | 516           | 23,689           | 83,829           |                   |                  | 45.91         | 1.00                 | 45.91         |                           |
| 2001                   | 998           | 1,000         | 39,862           | 148,945          |                   |                  | 39.94         | 1.00                 | 39.86         |                           |
| 2002                   | 968           | 969           | 33,066           | 150,722          |                   |                  | 34.16         | 1.00                 | 34.12         |                           |
| 2003                   | 1,022         | 1,024         | 34,730           | 160,419          |                   |                  | 33.98         | 1.00                 | 33.92         |                           |
| 2004                   | 998           | 999           | 26,739           | 140,714          |                   |                  | 26.79         | 1.00                 | 26.77         |                           |
| 2005                   | 657           | 661           | 15,086           | 90,172           |                   |                  | 22.96         | 1.01                 | 22.82         |                           |
| 2006                   | 307           | 308           | 5,607            | 37,077           |                   |                  | 18.26         | 1.00                 | 18.20         |                           |
| 2007                   | 146           | 147           | 2,696            | 17,195           |                   |                  | 18.47         | 1.01                 | 18.34         |                           |
| 2008                   | 191           | 191           | 3,066            | 22,375           |                   |                  | 16.05         | 1.00                 | 16.05         |                           |
| 2009                   | 223           | 225           | 3,315            | 24,036           |                   |                  | 14.87         | 1.01                 | 14.73         |                           |
| 2010                   | 161           | 161           | 2,535            | 18,305           |                   |                  | 15.75         | 1.00                 | 15.75         |                           |
| 2011                   | 151           | 151           | 2,395            | 15,764           |                   |                  | 15.86         | 1.00                 | 15.86         |                           |
| 2012                   | 105           | 105           | 1,519            | 10,860           |                   |                  | 14.47         | 1.00                 | 14.47         |                           |
| 2013                   | 30            | 30            | 453              | 3,118            |                   |                  | 15.10         | 1.00                 | 15.10         |                           |
| <b>2 to 4 Years</b>    | <b>50,696</b> | <b>50,748</b> | <b>1,174,403</b> | <b>7,152,459</b> | <b>6,005,275</b>  | <b>8,924,359</b> | <b>23.17</b>  | <b>1.00</b>          | <b>23.14</b>  | <b>8.44</b>               |
| 2000                   | 2,370         | 2,371         | 91,734           | 380,957          |                   |                  | 38.71         | 1.00                 | 38.69         |                           |
| 2001                   | 4,754         | 4,755         | 175,823          | 755,211          |                   |                  | 36.98         | 1.00                 | 36.98         |                           |
| 2002                   | 4,392         | 4,400         | 149,945          | 706,699          |                   |                  | 34.14         | 1.00                 | 34.08         |                           |
| 2003                   | 4,920         | 4,927         | 163,085          | 792,064          |                   |                  | 33.15         | 1.00                 | 33.10         |                           |
| 2004                   | 3,833         | 3,838         | 93,128           | 596,779          |                   |                  | 24.30         | 1.00                 | 24.26         |                           |
| 2005                   | 4,013         | 4,023         | 88,174           | 606,108          |                   |                  | 21.97         | 1.00                 | 21.92         |                           |
| 2006                   | 4,734         | 4,743         | 88,197           | 660,499          |                   |                  | 18.63         | 1.00                 | 18.60         |                           |
| 2007                   | 4,880         | 4,884         | 77,355           | 637,031          |                   |                  | 15.85         | 1.00                 | 15.84         |                           |
| 2008                   | 4,948         | 4,953         | 76,592           | 617,750          |                   |                  | 15.48         | 1.00                 | 15.46         |                           |
| 2009                   | 5,014         | 5,015         | 71,876           | 610,217          |                   |                  | 14.34         | 1.00                 | 14.33         |                           |
| 2010                   | 2,728         | 2,729         | 40,432           | 321,312          |                   |                  | 14.82         | 1.00                 | 14.82         |                           |
| 2011                   | 2,128         | 2,128         | 30,797           | 245,090          |                   |                  | 14.47         | 1.00                 | 14.47         |                           |
| 2012                   | 1,510         | 1,510         | 20,613           | 170,592          |                   |                  | 13.65         | 1.00                 | 13.65         |                           |
| 2013                   | 472           | 472           | 6,652            | 52,150           |                   |                  | 14.09         | 1.00                 | 14.09         |                           |



|                       | New Users      | Dispensings    | Days Supplied    | Amount Supplied   | Eligible Members* | Member-Years*     | Days Supplied | Dispensings per User | Days Supplied | New Users per 1K Eligible |
|-----------------------|----------------|----------------|------------------|-------------------|-------------------|-------------------|---------------|----------------------|---------------|---------------------------|
| <b>5 to 9 Years</b>   | <b>90,172</b>  | <b>90,260</b>  | <b>1,597,252</b> | <b>13,687,472</b> | <b>8,585,079</b>  | <b>15,684,573</b> | <b>17.71</b>  | <b>1.00</b>          | <b>17.70</b>  | <b>10.50</b>              |
| 2000                  | 3,503          | 3,509          | 119,115          | 608,875           |                   |                   | 34.00         | 1.00                 | 33.95         |                           |
| 2001                  | 6,862          | 6,868          | 218,978          | 1,179,308         |                   |                   | 31.91         | 1.00                 | 31.88         |                           |
| 2002                  | 5,913          | 5,923          | 179,686          | 1,009,517         |                   |                   | 30.39         | 1.00                 | 30.34         |                           |
| 2003                  | 6,349          | 6,355          | 181,524          | 1,108,926         |                   |                   | 28.59         | 1.00                 | 28.56         |                           |
| 2004                  | 4,439          | 4,448          | 81,581           | 736,059           |                   |                   | 18.38         | 1.00                 | 18.34         |                           |
| 2005                  | 5,726          | 5,738          | 99,730           | 944,884           |                   |                   | 17.42         | 1.00                 | 17.38         |                           |
| 2006                  | 6,756          | 6,772          | 98,437           | 1,039,603         |                   |                   | 14.57         | 1.00                 | 14.54         |                           |
| 2007                  | 8,011          | 8,015          | 101,341          | 1,184,189         |                   |                   | 12.65         | 1.00                 | 12.64         |                           |
| 2008                  | 9,543          | 9,556          | 114,708          | 1,414,979         |                   |                   | 12.02         | 1.00                 | 12.00         |                           |
| 2009                  | 13,114         | 13,118         | 155,817          | 1,802,136         |                   |                   | 11.88         | 1.00                 | 11.88         |                           |
| 2010                  | 7,121          | 7,121          | 89,079           | 960,347           |                   |                   | 12.51         | 1.00                 | 12.51         |                           |
| 2011                  | 6,328          | 6,328          | 77,952           | 843,457           |                   |                   | 12.32         | 1.00                 | 12.32         |                           |
| 2012                  | 4,652          | 4,654          | 57,244           | 611,352           |                   |                   | 12.31         | 1.00                 | 12.30         |                           |
| 2013                  | 1,855          | 1,855          | 22,060           | 243,840           |                   |                   | 11.89         | 1.00                 | 11.89         |                           |
| <b>10 to 17 Years</b> | <b>170,928</b> | <b>171,019</b> | <b>2,201,802</b> | <b>28,827,318</b> | <b>12,424,785</b> | <b>26,971,459</b> | <b>12.88</b>  | <b>1.00</b>          | <b>12.87</b>  | <b>13.76</b>              |
| 2000                  | 4,141          | 4,147          | 111,278          | 782,162           |                   |                   | 26.87         | 1.00                 | 26.83         |                           |
| 2001                  | 9,071          | 9,075          | 239,811          | 1,666,803         |                   |                   | 26.44         | 1.00                 | 26.43         |                           |
| 2002                  | 8,801          | 8,811          | 223,534          | 1,627,793         |                   |                   | 25.40         | 1.00                 | 25.37         |                           |
| 2003                  | 10,554         | 10,558         | 247,958          | 2,001,942         |                   |                   | 23.49         | 1.00                 | 23.49         |                           |
| 2004                  | 6,013          | 6,014          | 82,150           | 1,112,360         |                   |                   | 13.66         | 1.00                 | 13.66         |                           |
| 2005                  | 8,492          | 8,503          | 111,524          | 1,554,371         |                   |                   | 13.13         | 1.00                 | 13.12         |                           |
| 2006                  | 10,535         | 10,544         | 123,134          | 1,873,512         |                   |                   | 11.69         | 1.00                 | 11.68         |                           |
| 2007                  | 11,848         | 11,858         | 116,363          | 1,990,152         |                   |                   | 9.82          | 1.00                 | 9.81          |                           |
| 2008                  | 17,220         | 17,240         | 160,862          | 2,795,920         |                   |                   | 9.34          | 1.00                 | 9.33          |                           |
| 2009                  | 33,259         | 33,269         | 303,726          | 5,394,498         |                   |                   | 9.13          | 1.00                 | 9.13          |                           |
| 2010                  | 16,712         | 16,714         | 159,473          | 2,666,799         |                   |                   | 9.54          | 1.00                 | 9.54          |                           |
| 2011                  | 15,963         | 15,967         | 150,574          | 2,530,726         |                   |                   | 9.43          | 1.00                 | 9.43          |                           |
| 2012                  | 12,398         | 12,398         | 114,470          | 1,909,993         |                   |                   | 9.23          | 1.00                 | 9.23          |                           |
| 2013                  | 5,921          | 5,921          | 56,945           | 920,287           |                   |                   | 9.62          | 1.00                 | 9.62          |                           |

|                       | New Users        | Dispensings      | Days Supplied     | Amount Supplied    | Eligible Members* | Member-Years*     | Days Supplied | Dispensings per User | Days Supplied | New Users per 1K Eligible |
|-----------------------|------------------|------------------|-------------------|--------------------|-------------------|-------------------|---------------|----------------------|---------------|---------------------------|
| <b>18 to 44 Years</b> | <b>1,019,207</b> | <b>1,019,509</b> | <b>10,300,697</b> | <b>187,179,132</b> | <b>43,026,128</b> | <b>85,972,802</b> | <b>10.11</b>  | <b>1.00</b>          | <b>10.10</b>  | <b>23.69</b>              |
| 2000                  | 19,849           | 19,854           | 380,230           | 4,022,376          |                   |                   | 19.16         | 1.00                 | 19.15         |                           |
| 2001                  | 42,272           | 42,284           | 801,924           | 8,585,950          |                   |                   | 18.97         | 1.00                 | 18.97         |                           |
| 2002                  | 35,952           | 35,980           | 670,064           | 7,331,663          |                   |                   | 18.64         | 1.00                 | 18.62         |                           |
| 2003                  | 39,166           | 39,183           | 676,353           | 8,069,443          |                   |                   | 17.27         | 1.00                 | 17.26         |                           |
| 2004                  | 29,367           | 29,388           | 286,888           | 6,038,196          |                   |                   | 9.77          | 1.00                 | 9.76          |                           |
| 2005                  | 38,906           | 38,937           | 375,395           | 8,037,108          |                   |                   | 9.65          | 1.00                 | 9.64          |                           |
| 2006                  | 50,344           | 50,383           | 458,563           | 10,180,940         |                   |                   | 9.11          | 1.00                 | 9.10          |                           |
| 2007                  | 59,375           | 59,405           | 518,145           | 11,360,814         |                   |                   | 8.73          | 1.00                 | 8.72          |                           |
| 2008                  | 118,014          | 118,057          | 1,003,900         | 21,544,721         |                   |                   | 8.51          | 1.00                 | 8.50          |                           |
| 2009                  | 187,647          | 187,689          | 1,606,950         | 33,422,945         |                   |                   | 8.56          | 1.00                 | 8.56          |                           |
| 2010                  | 126,965          | 126,980          | 1,113,270         | 22,202,747         |                   |                   | 8.77          | 1.00                 | 8.77          |                           |
| 2011                  | 121,951          | 121,959          | 1,080,388         | 21,037,429         |                   |                   | 8.86          | 1.00                 | 8.86          |                           |
| 2012                  | 100,857          | 100,865          | 897,601           | 17,082,408         |                   |                   | 8.90          | 1.00                 | 8.90          |                           |
| 2013                  | 48,542           | 48,545           | 431,026           | 8,262,392          |                   |                   | 8.88          | 1.00                 | 8.88          |                           |
| <b>45 to 64 Years</b> | <b>902,290</b>   | <b>902,453</b>   | <b>9,157,809</b>  | <b>170,161,947</b> | <b>27,013,327</b> | <b>68,229,014</b> | <b>10.15</b>  | <b>1.00</b>          | <b>10.15</b>  | <b>33.40</b>              |
| 2000                  | 17,328           | 17,334           | 337,581           | 3,607,061          |                   |                   | 19.48         | 1.00                 | 19.48         |                           |
| 2001                  | 36,806           | 36,811           | 710,718           | 7,631,329          |                   |                   | 19.31         | 1.00                 | 19.31         |                           |
| 2002                  | 30,849           | 30,861           | 602,149           | 6,411,150          |                   |                   | 19.52         | 1.00                 | 19.51         |                           |
| 2003                  | 31,177           | 31,185           | 534,125           | 6,537,977          |                   |                   | 17.13         | 1.00                 | 17.13         |                           |
| 2004                  | 26,084           | 26,101           | 256,344           | 5,501,550          |                   |                   | 9.83          | 1.00                 | 9.82          |                           |
| 2005                  | 32,819           | 32,834           | 317,396           | 6,950,823          |                   |                   | 9.67          | 1.00                 | 9.67          |                           |
| 2006                  | 43,829           | 43,840           | 400,178           | 9,051,473          |                   |                   | 9.13          | 1.00                 | 9.13          |                           |
| 2007                  | 53,276           | 53,289           | 455,575           | 10,375,555         |                   |                   | 8.55          | 1.00                 | 8.55          |                           |
| 2008                  | 108,036          | 108,054          | 920,913           | 20,090,901         |                   |                   | 8.52          | 1.00                 | 8.52          |                           |
| 2009                  | 151,845          | 151,873          | 1,315,183         | 27,849,084         |                   |                   | 8.66          | 1.00                 | 8.66          |                           |
| 2010                  | 116,880          | 116,891          | 1,029,559         | 21,131,662         |                   |                   | 8.81          | 1.00                 | 8.81          |                           |
| 2011                  | 110,941          | 110,946          | 995,690           | 19,864,804         |                   |                   | 8.97          | 1.00                 | 8.97          |                           |
| 2012                  | 93,553           | 93,562           | 843,677           | 16,525,105         |                   |                   | 9.02          | 1.00                 | 9.02          |                           |
| 2013                  | 48,867           | 48,872           | 438,721           | 8,633,473          |                   |                   | 8.98          | 1.00                 | 8.98          |                           |

|                  | New Users      | Dispensings    | Days Supplied    | Amount Supplied   | Eligible Members* | Member-Years*     | Days Supplied | Dispensings per User | Days Supplied | New Users per 1K Eligible |
|------------------|----------------|----------------|------------------|-------------------|-------------------|-------------------|---------------|----------------------|---------------|---------------------------|
| <b>65+ Years</b> | <b>232,408</b> | <b>232,447</b> | <b>2,642,156</b> | <b>45,675,812</b> | <b>8,580,377</b>  | <b>25,900,271</b> | <b>11.37</b>  | <b>1.00</b>          | <b>11.37</b>  | <b>27.09</b>              |
| 2000             | 8,081          | 8,083          | 168,500          | 1,770,075         |                   |                   | 20.85         | 1.00                 | 20.85         |                           |
| 2001             | 17,005         | 17,006         | 349,822          | 3,702,646         |                   |                   | 20.57         | 1.00                 | 20.57         |                           |
| 2002             | 14,079         | 14,080         | 277,134          | 3,022,253         |                   |                   | 19.68         | 1.00                 | 19.68         |                           |
| 2003             | 13,740         | 13,744         | 254,184          | 2,971,633         |                   |                   | 18.50         | 1.00                 | 18.49         |                           |
| 2004             | 11,427         | 11,437         | 111,451          | 2,493,200         |                   |                   | 9.75          | 1.00                 | 9.74          |                           |
| 2005             | 12,975         | 12,981         | 125,378          | 2,819,513         |                   |                   | 9.66          | 1.00                 | 9.66          |                           |
| 2006             | 11,659         | 11,660         | 110,194          | 2,565,101         |                   |                   | 9.45          | 1.00                 | 9.45          |                           |
| 2007             | 8,406          | 8,406          | 73,549           | 1,642,894         |                   |                   | 8.75          | 1.00                 | 8.75          |                           |
| 2008             | 26,309         | 26,310         | 220,881          | 4,866,223         |                   |                   | 8.40          | 1.00                 | 8.40          |                           |
| 2009             | 29,571         | 29,574         | 254,334          | 5,460,379         |                   |                   | 8.60          | 1.00                 | 8.60          |                           |
| 2010             | 25,498         | 25,504         | 222,367          | 4,679,250         |                   |                   | 8.72          | 1.00                 | 8.72          |                           |
| 2011             | 22,920         | 22,922         | 202,085          | 4,167,809         |                   |                   | 8.82          | 1.00                 | 8.82          |                           |
| 2012             | 20,731         | 20,733         | 183,128          | 3,730,568         |                   |                   | 8.83          | 1.00                 | 8.83          |                           |
| 2013             | 10,007         | 10,007         | 89,149           | 1,784,268         |                   |                   | 8.91          | 1.00                 | 8.91          |                           |

\*Denominator data are not available within each individual age group-year strata.

**Appendix A. Generic and Brand Name Drugs Included in this Request**

---

| <b>Generic Name</b>            | <b>Drug Form</b> |
|--------------------------------|------------------|
|                                |                  |
| PROMETHAZINE HCL               | LIQUID           |
|                                |                  |
| PROMETHAZINE HCL/CODEINE       | LIQUID           |
| PROMETHAZINE/PHENYLEPH/CODEINE | LIQUID           |
|                                |                  |
| PROMETHAZINE HCL               | TABLET           |

**Appendix B. Modular Program Specifications for Request MPR\_WP21\_v01**

Modular Program #9 was used to investigate prevalent and incident use of promethazine in the Mini-Sentinel Distributed Database (MSDD). In total, three different scenarios were examined in this report with differing exposures of interest. See below for a description of each of these scenarios.

|                             |   |
|-----------------------------|---|
| <b>Coverage Requirement</b> | Drug and Medical Coverage                                       |
| <b>Query Period</b>         | January 1, 2000 to May 31, 2013                                 |
| <b>Enrollment Gap</b>       | 45 Days   |
| <b>Age Stratifications</b>  | 0-5mo, 6-11mo, 12-23mo, 2-4y, 5-9y, 10-17y, 18-44y, 45-64y, 65+ |

**Drug/Exposure Criteria**

| Scenario | Exposure   | Incident w/ respect to<br>(incidence criteria) <sup>4</sup>       | Enrollment   |      |                | Incidence Type |
|----------|--|---|--------------|------|----------------|----------------|
|          |  |   | Care Setting | Days | Washout (days) |                |
| 1        | Promethazine, oral liquid only (non-codeine) <sup>1</sup>                | All oral promethazine (includes liquid, tablet, and with codeine) | Any          | 0    | 183            | SING           |
| 2        | Promethazine, oral tablet only <sup>2</sup>                              | All oral promethazine (includes liquid, tablet, and with codeine) | Any          | 0    | 183            | SING           |
| 3        | Promethazine/Codeine and Promethazine/Phenylephrine/Codeine <sup>3</sup> | All oral promethazine (includes liquid, tablet, and with codeine) | Any          | 0    | 183            | SING           |

National Drug Codes (NDCs) checked against First Data Bank's "National Drug Data File (NDDF®) Plus"  
 International Classification of Diseases, Ninth Edition, Clinical Modification (ICD-9-CM) diagnosis and procedure codes checked against "Ingenix 2012 ICD-9-CM Data File" provided by OptumInsight  
 Healthcare Common Procedure Coding System (HCPCS) codes checked against "Optum 2012 HCPCS Level II Data File" provided by OptumInsight  
 Current Procedural Terminology, Fourth Revision (CPT-4) codes checked against "Optum 2012 Current Procedure Codes & Relative Values Data File" provided by OptumInsight

<sup>1</sup>Includes oral formulations of promethazine with liquid as the drug form. See Appendix A for generic and brand names.

<sup>2</sup>Includes oral formulations of promethazine with tablet as the drug form. See Appendix A for generic and brand names.

<sup>3</sup>Includes oral formulations of promethazine/codeine and promethazine/phenylephrine/codeine. See Appendix A for generic and brand names.

<sup>4</sup>Includes all oral formulations of promethazine, promethazine/codeine, and promethazine/phenyleph/codeine. See Appendix A for generic and brand names.

**Appendix C. Dates of Available Data for Each Data Partner up to Request End Date (May 31, 2013)**

| <b>DP ID</b> | <b>Start Date</b> | <b>End Date</b> |
|--------------|-------------------|-----------------|
| DP0001       | 1/2/2008          | 8/30/2013       |
| DP0002       | 1/1/2000          | 6/30/2013       |
| DP0003       | 6/30/2012         | 6/30/2012       |
| DP0004       | 1/1/2000          | 8/30/2013       |
| DP0005       | 1/1/2000          | 4/30/2012       |
| DP0006       | 6/1/2007          | 4/30/2013       |
| DP0007       | 1/1/2005          | 3/31/2013       |
| DP0008       | 1/1/2008          | 3/31/2013       |
| DP0009       | 1/1/2000          | 12/31/2012      |
| DP0010       | 1/31/2000         | 6/30/2013       |
| DP0011       | 1/2/2000          | 12/31/2011      |
| DP0012       | 1/1/2000          | 5/31/2013       |
| DP0013       | 1/2/2000          | 6/30/2012       |
| DP0014       | 1/1/2000          | 5/31/2013       |
| DP0015       | 1/31/2000         | 3/31/2013       |
| DP0016       | 1/1/2000          | 12/31/2011      |
| DP0017       | 1/1/2006          | 5/30/2013       |
| DP0018       | 1/31/2004         | 8/30/2013       |