

Disclaimer

The following report(s) provides findings from an FDA-initiated query using Sentinel. While Sentinel queries may be undertaken to assess potential medical product safety risks, they may also be initiated for various other reasons. Some examples include determining a rate or count of an identified health outcome of interest, examining medical product use, exploring the feasibility of future, more detailed analyses within Sentinel, and seeking to better understand Sentinel capabilities.

Data obtained through Sentinel are intended to complement other types of evidence such as preclinical studies, clinical trials, postmarket studies, and adverse event reports, all of which are used by FDA to inform regulatory decisions regarding medical product safety. The information contained in this report is provided as part of FDA's commitment to place knowledge acquired from Sentinel in the public domain as soon as possible. Any public health actions taken by FDA regarding products involved in Sentinel queries will continue to be communicated through existing channels.

FDA wants to emphasize that the fact that FDA has initiated a query involving a medical product and is reporting findings related to that query does not mean that FDA is suggesting health care practitioners should change their prescribing practices for the medical product or that patients taking the medical product should stop using it. Patients who have questions about the use of an identified medical product should contact their health care practitioners.

The following report contains a description of the request, request specifications, and results from the modular program run(s).

If you are using a web page screen reader and are unable to access this document, please contact the Sentinel Operations Center for assistance at info@sentinelssystem.org.

Overview for Request: cder_mpl1p_wp239

Request ID: cder_mpl1r_wp239_mkscnr_v01

Date Run: January 17, 2023

Request Description: In this report, we compare the frequency of procedure codes for endoscopy to examine trends in code usage surrounding the October, 2015 transition from International Classification of Diseases, Ninth Revision, Procedure Coding System (ICD-9-PCS) to International Classification of Diseases, Tenth Revision, Procedure Coding System (ICD-10-PCS) codes. We determined mappings by performing comprehensive code list searches in both the ICD-9 and ICD-10 eras and leveraging the Centers for Medicare and Medicaid Services (CMS) General Equivalence Mappings (GEMs). We used forward-backward mapping as part of this comprehensive approach.¹

Sentinel Routine Querying Module: Cohort Identification and Descriptive Analysis (CIDA) module, version 12.0.0.

Data Source: We ran this request against a 100% sample from the Merative™ MarketScan® Research Databases which includes ~155 million members. We included data from October 1, 2010 to December 31, 2021 in this report. This report includes several distinct time periods: 1) October 1, 2013 to September 30, 2014; 2) October 1, 2014 to September 30, 2015; 3) October 1, 2015 to September 30, 2016; 4) October 1, 2016 to September 30, 2017; 5) October 1, 2010 to December 31, 2021. See Appendix A for the dates of available data used in this report.

Study Design: We examined the incidence and prevalence of endoscopy across the ICD-9-PCS era (October 2010-September 2015) and ICD-10-PCS (October 2015-now) in data.

For conditions that could also be defined by non-ICD codes (e.g., Current Procedural Terminology, Fourth Edition (CPT-4) or Healthcare Common Procedure Coding System (HCPCS)), we included these additional codes in our outcome definitions in both the ICD-9 and ICD-10 eras.

See Appendices B and C or specific codes used to define endoscopy in this request.

Cohort Eligibility Criteria:

Incident Cohorts: We identified codes for endoscopy and set this as our index date. For the one-year time periods, we defined index events using only the relevant terminologies available for use during that window. For example, in the October 2014 to September 2015 window we defined index using ICD-9-PCS, CPT-4, and HCPCS codes only. In the October 2015 to September 2016 window we defined index using ICD-10-PCS, CPT-4, and HCPCS codes only. For the October 2010 to December 2021 time period, we created separate cohorts for ICD-9 era codes and ICD-10 era codes but looked for these across the full study period. We required cohort members be continuously enrolled in plans with at least medical coverage for the 183 days prior to index, during which gaps in coverage up to 45 days were allowed and considered continuous enrollment. We defined incidence as no prior evidence of any outcome-defining code (including ICD-9, ICD-10, CPT-4, HCPCS terminologies) in the 183 days prior to index. Cohort re-entry was allowed. See Appendix C for specific codes used to define incidence criteria in this request.

Prevalent Cohorts: We identified codes for endoscopy and set this as our index date. We created separate cohorts for ICD-9 era codes and ICD-10 era codes but looked for these across the full study period. Again, we included codes that spanned the ICD-9 and ICD-10 eras (e.g. CPT-4 and HCPCS codes) in both the ICD-9 and ICD-10 cohorts, when relevant. We did not require any pre-index enrollment requirements for these cohorts. Cohort re-entry was allowed. We assessed prevalence only in the October 2010 to December 2021 time period.

Limitations: Algorithms used to define outcomes are imperfect; thus, it is possible that there may be misclassification. Therefore, data should be interpreted with this limitation in mind.

Please refer to Appendix D for detailed specifications of parameters used in the analyses for this request.

¹Fung, K. W., et al. (2016). "Preparing for the ICD-10-CM Transition: Automated Methods for Translating ICD Codes in Clinical Phenotype Definitions." EGEMS (Wash DC) 4(1): 1211.

Notes: Please contact the Sentinel Operations Center (info@sentinelssystem.org) for questions and to provide comments/suggestions for future enhancements to this document. For more information on Sentinel's routine querying modules, please refer to the documentation (<https://dev.sentinelssystem.org/projects/SENTINEL/repos/sentinel-routine-querying-tool-documentation/browse>).

Table of Contents

Glossary (CIDA) List of Terms to Define the Cohort Identification and Descriptive Analysis (CIDA) Found in this Report

Table 1 Summary of Endoscopy Procedure in the Merative MarketScan Research Databases from October 1, 2010 to December 31, 2021

Table 2 Summary of Endoscopy Procedure in the Merative MarketScan Research Databases from October 1, 2010 to December 31, 2021, by Year and Month

Figure 1 Incidence of Endoscopy Procedure (183 Days Washout) per 10,000 Eligible Members from October 2010 to December 2021 by Code Type

Figure 2 Prevalence of Endoscopy Procedure (0 Days Washout) per 10,000 Eligible Members from October 2010 to December 2021 by Code Type

Appendix A Dates of Available Data for Each Data Partner (DP) as of Request Distribution Date (January 17, 2023)

Appendix B List of Current Procedural Terminology, Fourth Edition (CPT-4), Current Procedural Terminology, Third Edition (CPT-3), Healthcare Common Procedure Coding System, Level II (HCPCS), International Classification of Diseases, Ninth Revision, Clinical Modification (ICD-9-CM), and International Classification of Diseases, Tenth Revision, Procedural Coding System (ICD-10-PCS) Codes Used to Define Endoscopy Procedures in this Request

Appendix C List of Current Procedural Terminology, Fourth Edition (CPT-4), Current Procedural Terminology, Third Edition (CPT-3), Healthcare Common Procedure Coding System, Level II (HCPCS), International Classification of Diseases, Ninth Revision, Clinical Modification (ICD-9-CM), International Classification of Diseases, Tenth Revision, Clinical Modification (ICD-10-CM), and International Classification of Diseases, Tenth Revision, Procedural Coding System (ICD-10-PCS) Codes Used to Define Endoscopy Procedure Incidence

Appendix D Specifications of the Study Design and Parameters Used in this Request

Glossary of Terms for Analyses Using Cohort Identification and Descriptive Analysis (CIDA) Module*

Amount Supplied - number of units (pills, tablets, vials) dispensed. Net amount per NDC per dispensing.

Blackout Period - number of days at the beginning of a treatment episode that events are to be ignored. If an event occurs during the blackout period, the episode is excluded.

Care Setting - type of medical encounter or facility where the exposure, event, or condition code was recorded. Possible care settings include: Inpatient Hospital Stay (IP), Non-Acute Institutional Stay (IS), Emergency Department (ED), Ambulatory Visit (AV), and Other Ambulatory Visit (OA). For laboratory results, possible care settings include: Emergency Department (E), Home (H), Inpatient (I), Outpatient (O), or Unknown or Missing (U). The Care Setting, along with the Principal Diagnosis Indicator (PDX), forms the Care Setting/PDX parameter.

Ambulatory Visit (AV) - includes visits at outpatient clinics, same-day surgeries, urgent care visits, and other same-day ambulatory hospital encounters, but excludes emergency department encounters.

Emergency Department (ED) - includes ED encounters that become inpatient stays (in which case inpatient stays would be a separate encounter). Excludes urgent care visits.

Inpatient Hospital Stay (IP) - includes all inpatient stays, same-day hospital discharges, hospital transfers, and acute hospital care where the discharge is after the admission date.

Non-Acute Institutional Stay (IS) - includes hospice, skilled nursing facility (SNF), rehab center, nursing home, residential, overnight non-hospital dialysis and other non-hospital stays.

Other Ambulatory Visit (OA) - includes other non overnight AV encounters such as hospice visits, home health visits, skilled nursing facility visits, other non-hospital visits, as well as telemedicine, telephone and email consultations.

Charlson/Elixhauser Combined Comorbidity Score - calculated based on comorbidities observed during a requester-defined window around the exposure episode start date (e.g., in the 183 days prior to index).

Code Days - the minimum number of times the diagnosis must be found during the evaluation period in order to fulfill the algorithm to identify the corresponding patient characteristic.

Cohort Definition (drug/exposure) - indicates how the cohort will be defined: 01: Cohort includes only the first valid treatment episode during the query period; 02: Cohort includes all valid treatment episodes during the query period; 03: Cohort includes all valid treatment episodes during the query period until an event occurs.

Computed Start Marketing Date - represents the first observed dispensing date among all valid users within a GROUP (scenario) within each Data Partner site.

Days Supplied - number of days supplied for all dispensings in qualifying treatment episodes.

Eligible Members - number of members eligible for an incident treatment episode (defined by the drug/exposure and event washout periods) with drug and medical coverage during the query period.

Enrollment Gap - number of days allowed between two consecutive enrollment periods without breaking a "continuously enrolled" sequence.

Episodes - treatment episodes; length of episode is determined by days supplied in one dispensing or consecutive dispensings bridged by the episode gap.

Episode Gap - number of days allowed between two (or more) consecutive exposures (dispensings/procedures) to be considered the same treatment episode.

Event Deduplication - specifies how events are counted by the Modular Program (MP) algorithm: 0: Counts all occurrences of a health outcome of interest (HOI) during an exposure episode; 1: de-duplicates occurrences of the same HOI code and code type on the same day; 2: de-duplicates occurrences of the same HOI group on the same day (e.g., de-duplicates at the group level).

Exposure Episode Length - number of days after exposure initiation that is considered "exposed time."

Exposure Extension Period - number of days post treatment period in which the outcomes/events are counted for a treatment episode. Extensions are added after any episode gaps have been bridged.

Lookback Period - number of days wherein a member is required to have evidence of pre-existing condition (diagnosis/procedure/drug dispensing).

Maximum Episode Duration - truncates exposure episodes after a requester-specified number of exposed days. Applied after any gaps are bridged and extension days added to the length of the exposure episode.

Member-Years - sum of all days of enrollment with medical and drug coverage in the query period preceded by an exposure washout period all divided by 365.25.

Minimum Days Supplied - specifies a minimum number of days in length of the days supplied for the episode to be considered.

Glossary of Terms for Analyses Using Cohort Identification and Descriptive Analysis (CIDA) Module*

Minimum Episode Duration - specifies a minimum number of days in length of the episode for it to be considered. Applied after any gaps are bridged and extension days added to the length of the exposure episode.

Monitoring Period - used to define time periods of interest for both sequential analysis and simple cohort characterization requests.

Principal Diagnosis (PDX) - diagnosis or condition established to be chiefly responsible for admission of the patient to the hospital. 'P' = principal diagnosis, 'S' = secondary diagnosis, 'X' = unspecified diagnosis, '.' = blank. Along with the Care Setting values, forms the CareSetting/PDX parameter.

Query Period - period in which the modular program looks for exposures and outcomes of interest.

Switch Evaluation Step Value - value used to differentiate evaluation step. Each switch pattern can support up to 2 evaluation steps (0 = switch pattern evaluation start; 1 = first evaluation; 2 = second evaluation).

Switch Gap Inclusion Indicator - indicator for whether gaps in treatment episodes that are included in a switch episode will be counted as part of the switch episode duration.

Switch Pattern Cohort Inclusion Date - indicates which date to use for inclusion into the switch pattern cohort of interest as well as optionally as the index date of the treatment episode initiating the switch pattern. Valid options are the product approval date, product marketing date, other requester defined date, or computed start marketing date.

Switch Pattern Cohort Inclusion Strategy - indicates how the switch pattern cohort inclusion date will be used: 01: used only as a switch cohort entry date. First treatment episode dispensing date is used as index for computing time to first switch; 02: used as switch cohort entry date and as initial switch step index date for computing time to first switch.

Treatment Episode Truncation Indicator - indicates whether the exposure episode will be truncated at the occurrence of a requester-specified code.

Washout Period (drug/exposure) - number of days a user is required to have no evidence of prior exposure (drug dispensing/procedure) and continuous drug and medical coverage prior to an incident treatment episode.

Washout Period (event/outcome) - number of days a user is required to have no evidence of a prior event (procedure/diagnosis) and continuous drug and medical coverage prior to an incident treatment episode.

Years at Risk - number of days supplied plus any episode gaps and exposure extension periods all divided by 365.25.

*all terms may not be used in this report

Table 1. Summary of Endoscopy Procedure in the Merative MarketScan Research Databases from October 1, 2010 to December 31, 2021

	Number of Patients	Number of Episodes	Number of Eligible Members¹	Number of Exposed Members per 10,000 Eligible Members
<i>Endoscopy Procedure ICD-9-CM from 2013 to 2014</i>	1,582,727	1,590,997	49,235,177	321.46
<i>Endoscopy Procedure ICD-9-CM from 2014 to 2015</i>	1,198,003	1,203,503	45,064,012	265.84
<i>Endoscopy Procedure ICD-10-CM from 2015 to 2016</i>	1,019,063	1,024,505	29,460,805	345.90
<i>Endoscopy Procedure ICD-9-CM Incidence</i>	11,581,853	13,713,304	128,569,689	900.82
<i>Endoscopy Procedure ICD-10-CM Incidence</i>	11,432,715	13,507,782	128,569,689	889.22
<i>Endoscopy Procedure ICD-9-CM Prevalence</i>	12,962,181	16,359,770	149,022,924	869.81
<i>Endoscopy Procedure ICD-10-CM Prevalence</i>	12,818,284	16,081,275	149,022,924	860.16

¹Eligible Members are reflective of the number of patients that met all cohort entry criteria on at least one day during the query period.

Table 2. Summary of Endoscopy Procedure in the Merative MarketScan Research Databases from October 1, 2010 to December 31, 2021, by Year and Month

	Number of Patients	Number of Episodes	Number of Eligible Members ¹	Number of Exposed Members per 10,000 Eligible Members
Endoscopy Procedure ICD-9-CM Incidence				
<i>2010</i>				
October	168,026	168,026	42,941,877	39.13
November	174,530	174,530	42,415,569	41.15
December	184,362	184,362	43,247,658	42.63
<i>2011</i>				
January	134,902	134,902	37,490,985	35.98
February	127,350	127,350	36,936,539	34.48
March	152,177	152,177	37,115,655	41.00
April	141,174	141,174	37,221,231	37.93
May	140,536	140,536	37,198,465	37.78
June	148,671	148,671	37,206,238	39.96
July	161,712	161,712	46,633,044	34.68
August	191,199	191,199	46,963,854	40.71
September	173,487	173,487	46,217,332	37.54
October	181,321	181,321	46,623,922	38.89
November	183,890	183,890	46,091,938	39.90
December	201,000	201,000	47,070,478	42.70
<i>2012</i>				
January	152,752	152,752	42,305,223	36.11
February	154,201	154,201	41,771,605	36.92
March	165,697	165,697	41,762,218	39.68
April	157,726	157,726	41,629,116	37.89
May	159,896	159,896	41,626,205	38.41
June	158,850	158,850	41,602,278	38.18
July	169,718	169,718	46,730,309	36.32
August	186,291	186,291	47,062,078	39.58
September	154,729	154,729	46,361,962	33.37
October	185,956	185,956	46,786,152	39.75
November	181,692	181,692	46,264,148	39.27
December	182,567	182,567	47,165,289	38.71
<i>2013</i>				
January	118,282	118,282	32,659,918	36.22
February	111,424	111,424	32,312,321	34.48
March	118,696	118,696	32,498,674	36.52
April	128,872	128,872	32,574,711	39.56

Table 2. Summary of Endoscopy Procedure in the Merative MarketScan Research Databases from October 1, 2010 to December 31, 2021, by Year and Month

	Number of Patients	Number of Episodes	Number of Eligible Members ¹	Number of Exposed Members per 10,000 Eligible Members
May	126,360	126,360	32,586,238	38.78
June	119,596	119,596	32,477,134	36.82
July	139,161	139,161	37,169,783	37.44
August	144,196	144,196	37,466,279	38.49
September	133,033	133,033	36,831,845	36.12
October	154,517	154,517	37,104,503	41.64
November	145,766	145,766	36,551,619	39.88
December	159,513	159,513	37,032,596	43.07
<i>2014</i>				
January	116,827	116,827	32,418,462	36.04
February	107,577	107,577	32,012,061	33.61
March	119,057	119,057	32,234,376	36.93
April	124,040	124,040	32,213,648	38.51
May	118,182	118,182	32,039,977	36.89
June	121,676	121,676	32,155,043	37.84
July	144,000	144,000	38,413,925	37.49
August	140,906	140,906	38,729,682	36.38
September	138,936	138,936	38,111,522	36.46
October	158,413	158,413	38,635,250	41.00
November	141,633	141,633	38,084,488	37.19
December	166,242	166,242	38,912,463	42.72
<i>2015</i>				
January	74,436	74,436	21,721,523	34.27
February	71,404	71,404	21,461,621	33.27
March	81,144	81,144	21,501,308	37.74
April	81,867	81,867	21,502,580	38.07
May	76,746	76,746	21,490,295	35.71
June	85,461	85,461	21,435,759	39.87
July	91,272	91,272	23,684,074	38.54
August	88,348	88,348	23,885,545	36.99
September	86,534	86,534	23,511,431	36.81
October	93,185	93,185	23,684,907	39.34
November	91,551	91,551	23,387,052	39.15
December	105,692	105,692	23,769,071	44.47
<i>2016</i>				
January	71,623	71,623	21,341,462	33.56

Table 2. Summary of Endoscopy Procedure in the Merative MarketScan Research Databases from October 1, 2010 to December 31, 2021, by Year and Month

	Number of Patients	Number of Episodes	Number of Eligible Members ¹	Number of Exposed Members per 10,000 Eligible Members
February	75,154	75,154	21,096,554	35.62
March	80,595	80,595	21,162,604	38.08
April	79,307	79,307	21,186,895	37.43
May	76,676	76,676	21,158,080	36.24
June	82,064	82,064	21,127,397	38.84
July	80,031	80,031	23,628,629	33.87
August	92,810	92,810	23,812,403	38.98
September	86,613	86,613	23,438,124	36.95
October	88,119	88,119	23,571,446	37.38
November	93,391	93,391	23,236,090	40.19
December	104,480	104,480	23,571,655	44.32
<i>2017</i>				
January	65,072	65,072	18,824,716	34.57
February	62,930	62,930	18,597,934	33.84
March	73,499	73,499	18,653,200	39.40
April	65,175	65,175	18,643,037	34.96
May	70,973	70,973	18,613,718	38.13
June	72,427	72,427	18,559,182	39.02
July	73,862	73,862	21,880,453	33.76
August	84,939	84,939	22,049,691	38.52
September	73,235	73,235	21,712,707	33.73
October	86,498	86,498	21,883,814	39.53
November	86,032	86,032	21,427,868	40.15
December	92,519	92,519	21,696,957	42.64
<i>2018</i>				
January	59,781	59,781	17,622,336	33.92
February	57,351	57,351	17,418,943	32.92
March	62,847	62,847	17,458,777	36.00
April	62,438	62,438	17,448,641	35.78
May	63,777	63,777	17,438,245	36.57
June	63,678	63,678	17,382,351	36.63
July	74,912	74,912	21,678,193	34.56
August	82,691	82,691	21,866,924	37.82
September	70,316	70,316	21,491,698	32.72
October	88,578	88,578	21,669,692	40.88
November	87,542	87,542	21,346,038	41.01

Table 2. Summary of Endoscopy Procedure in the Merative MarketScan Research Databases from October 1, 2010 to December 31, 2021, by Year and Month

	Number of Patients	Number of Episodes	Number of Eligible Members ¹	Number of Exposed Members per 10,000 Eligible Members
December	86,901	86,901	21,696,974	40.05
<i>2019</i>				
January	64,690	64,690	18,342,546	35.27
February	61,257	61,257	18,105,694	33.83
March	65,212	65,212	18,181,168	35.87
April	68,485	68,485	18,097,227	37.84
May	67,833	67,833	18,087,631	37.50
June	63,752	63,752	18,016,689	35.38
July	72,290	72,290	19,697,257	36.70
August	74,416	74,416	19,879,690	37.43
September	68,135	68,135	19,515,164	34.91
October	80,639	80,639	19,740,211	40.85
November	76,428	76,428	19,440,760	39.31
December	81,108	81,108	19,777,170	41.01
<i>2020</i>				
January	60,044	60,044	16,508,537	36.37
February	56,326	56,326	16,308,605	34.54
March	37,324	37,324	16,383,327	22.78
April	5,689	5,689	16,454,497	3.46
May	22,091	22,091	16,525,408	13.37
June	48,427	48,427	16,535,609	29.29
July	62,569	62,569	19,562,864	31.98
August	63,667	63,667	19,754,688	32.23
September	68,039	68,039	19,411,846	35.05
October	78,299	78,299	19,435,638	40.29
November	70,204	70,204	19,122,513	36.71
December	76,582	76,582	19,329,266	39.62
<i>2021</i>				
January	48,185	48,185	16,177,076	29.79
February	47,861	47,861	15,985,654	29.94
March	60,130	60,130	16,000,204	37.58
April	59,682	59,682	15,977,488	37.35
May	55,540	55,540	15,942,153	34.84
June	61,398	61,398	15,860,459	38.71
July	64,647	64,647	17,496,607	36.95
August	65,934	65,934	17,581,637	37.50

Table 2. Summary of Endoscopy Procedure in the Merative MarketScan Research Databases from October 1, 2010 to December 31, 2021, by Year and Month

	Number of Patients	Number of Episodes	Number of Eligible Members ¹	Number of Exposed Members per 10,000 Eligible Members
September	63,137	63,137	17,226,486	36.65
October	69,603	69,603	17,390,119	40.02
November	71,436	71,436	17,087,907	41.81
December	74,452	74,452	17,345,972	42.92
Endoscopy Procedure ICD-10-CM Incidence				
<i>2010</i>				
October	161,806	161,806	42,941,877	37.68
November	168,297	168,297	42,415,569	39.68
December	177,947	177,947	43,247,658	41.15
<i>2011</i>				
January	129,321	129,321	37,490,985	34.49
February	122,146	122,146	36,936,539	33.07
March	146,360	146,360	37,115,655	39.43
April	135,709	135,709	37,221,231	36.46
May	135,081	135,081	37,198,465	36.31
June	143,136	143,136	37,206,238	38.47
July	155,597	155,597	46,633,044	33.37
August	184,180	184,180	46,963,854	39.22
September	166,791	166,791	46,217,332	36.09
October	174,420	174,420	46,623,922	37.41
November	177,211	177,211	46,091,938	38.45
December	194,391	194,391	47,070,478	41.30
<i>2012</i>				
January	147,581	147,581	42,305,223	34.88
February	149,223	149,223	41,771,605	35.72
March	160,695	160,695	41,762,218	38.48
April	153,193	153,193	41,629,116	36.80
May	155,381	155,381	41,626,205	37.33
June	154,310	154,310	41,602,278	37.09
July	164,845	164,845	46,730,309	35.28
August	181,326	181,326	47,062,078	38.53
September	150,256	150,256	46,361,962	32.41
October	181,024	181,024	46,786,152	38.69
November	177,255	177,255	46,264,148	38.31
December	178,104	178,104	47,165,289	37.76
<i>2013</i>				

Table 2. Summary of Endoscopy Procedure in the Merative MarketScan Research Databases from October 1, 2010 to December 31, 2021, by Year and Month

	Number of Patients	Number of Episodes	Number of Eligible Members ¹	Number of Exposed Members per 10,000 Eligible Members
January	114,872	114,872	32,659,918	35.17
February	108,353	108,353	32,312,321	33.53
March	115,385	115,385	32,498,674	35.50
April	125,578	125,578	32,574,711	38.55
May	123,071	123,071	32,586,238	37.77
June	116,481	116,481	32,477,134	35.87
July	135,397	135,397	37,169,783	36.43
August	140,310	140,310	37,466,279	37.45
September	129,205	129,205	36,831,845	35.08
October	150,736	150,736	37,104,503	40.62
November	142,343	142,343	36,551,619	38.94
December	156,064	156,064	37,032,596	42.14
<i>2014</i>				
January	113,751	113,751	32,418,462	35.09
February	104,761	104,761	32,012,061	32.73
March	115,932	115,932	32,234,376	35.97
April	120,879	120,879	32,213,648	37.52
May	115,256	115,256	32,039,977	35.97
June	118,736	118,736	32,155,043	36.93
July	140,485	140,485	38,413,925	36.57
August	137,377	137,377	38,729,682	35.47
September	135,469	135,469	38,111,522	35.55
October	154,820	154,820	38,635,250	40.07
November	138,384	138,384	38,084,488	36.34
December	162,734	162,734	38,912,463	41.82
<i>2015</i>				
January	72,278	72,278	21,721,523	33.27
February	69,453	69,453	21,461,621	32.36
March	78,807	78,807	21,501,308	36.65
April	79,660	79,660	21,502,580	37.05
May	74,632	74,632	21,490,295	34.73
June	83,242	83,242	21,435,759	38.83
July	88,813	88,813	23,684,074	37.50
August	85,965	85,965	23,885,545	35.99
September	84,550	84,550	23,511,431	35.96
October	93,897	93,897	23,684,907	39.64

Table 2. Summary of Endoscopy Procedure in the Merative MarketScan Research Databases from October 1, 2010 to December 31, 2021, by Year and Month

	Number of Patients	Number of Episodes	Number of Eligible Members ¹	Number of Exposed Members per 10,000 Eligible Members
November	92,217	92,217	23,387,052	39.43
December	106,470	106,470	23,769,071	44.79
<i>2016</i>				
January	72,256	72,256	21,341,462	33.86
February	75,752	75,752	21,096,554	35.91
March	81,296	81,296	21,162,604	38.41
April	80,037	80,037	21,186,895	37.78
May	77,406	77,406	21,158,080	36.58
June	82,789	82,789	21,127,397	39.19
July	80,714	80,714	23,628,629	34.16
August	93,615	93,615	23,812,403	39.31
September	87,366	87,366	23,438,124	37.28
October	88,859	88,859	23,571,446	37.70
November	94,193	94,193	23,236,090	40.54
December	105,343	105,343	23,571,655	44.69
<i>2017</i>				
January	65,632	65,632	18,824,716	34.86
February	63,473	63,473	18,597,934	34.13
March	74,079	74,079	18,653,200	39.71
April	65,670	65,670	18,643,037	35.22
May	71,508	71,508	18,613,718	38.42
June	72,962	72,962	18,559,182	39.31
July	74,468	74,468	21,880,453	34.03
August	85,617	85,617	22,049,691	38.83
September	73,822	73,822	21,712,707	34.00
October	87,182	87,182	21,883,814	39.84
November	86,665	86,665	21,427,868	40.44
December	93,207	93,207	21,696,957	42.96
<i>2018</i>				
January	60,216	60,216	17,622,336	34.17
February	57,769	57,769	17,418,943	33.16
March	63,284	63,284	17,458,777	36.25
April	62,897	62,897	17,448,641	36.05
May	64,264	64,264	17,438,245	36.85
June	64,108	64,108	17,382,351	36.88
July	75,446	75,446	21,678,193	34.80

Table 2. Summary of Endoscopy Procedure in the Merative MarketScan Research Databases from October 1, 2010 to December 31, 2021, by Year and Month

	Number of Patients	Number of Episodes	Number of Eligible Members ¹	Number of Exposed Members per 10,000 Eligible Members
August	83,379	83,379	21,866,924	38.13
September	70,921	70,921	21,491,698	33.00
October	89,209	89,209	21,669,692	41.17
November	88,231	88,231	21,346,038	41.33
December	87,651	87,651	21,696,974	40.40
<i>2019</i>				
January	65,271	65,271	18,342,546	35.58
February	61,745	61,745	18,105,694	34.10
March	65,675	65,675	18,181,168	36.12
April	68,980	68,980	18,097,227	38.12
May	68,288	68,288	18,087,631	37.75
June	64,203	64,203	18,016,689	35.64
July	72,830	72,830	19,697,257	36.97
August	74,923	74,923	19,879,690	37.69
September	68,669	68,669	19,515,164	35.19
October	81,209	81,209	19,740,211	41.14
November	76,961	76,961	19,440,760	39.59
December	81,781	81,781	19,777,170	41.35
<i>2020</i>				
January	60,491	60,491	16,508,537	36.64
February	56,766	56,766	16,308,605	34.81
March	37,642	37,642	16,383,327	22.98
April	5,889	5,889	16,454,497	3.58
May	22,456	22,456	16,525,408	13.59
June	48,925	48,925	16,535,609	29.59
July	63,173	63,173	19,562,864	32.29
August	64,338	64,338	19,754,688	32.57
September	68,669	68,669	19,411,846	35.37
October	78,989	78,989	19,435,638	40.64
November	70,817	70,817	19,122,513	37.03
December	77,262	77,262	19,329,266	39.97
<i>2021</i>				
January	48,675	48,675	16,177,076	30.09
February	48,362	48,362	15,985,654	30.25
March	60,697	60,697	16,000,204	37.94
April	60,193	60,193	15,977,488	37.67

Table 2. Summary of Endoscopy Procedure in the Merative MarketScan Research Databases from October 1, 2010 to December 31, 2021, by Year and Month

	Number of Patients	Number of Episodes	Number of Eligible Members ¹	Number of Exposed Members per 10,000 Eligible Members
May	56,059	56,059	15,942,153	35.16
June	61,942	61,942	15,860,459	39.05
July	65,242	65,242	17,496,607	37.29
August	66,475	66,475	17,581,637	37.81
September	63,645	63,645	17,226,486	36.95
October	70,182	70,182	17,390,119	40.36
November	72,028	72,028	17,087,907	42.15
December	75,095	75,095	17,345,972	43.29
Endoscopy Procedure ICD-9-CM Prevalence				
<i>2010</i>				
October	186,176	189,863	47,783,732	38.96
November	192,906	196,480	47,714,965	40.43
December	202,888	206,835	47,760,109	42.48
<i>2011</i>				
January	184,516	188,650	52,274,120	35.30
February	175,549	179,279	52,038,076	33.73
March	209,363	214,238	51,957,287	40.30
April	193,972	198,130	51,860,782	37.40
May	192,948	197,087	51,769,930	37.27
June	203,773	208,111	51,756,451	39.37
July	180,807	184,564	51,804,123	34.90
August	211,768	216,463	51,756,708	40.92
September	193,153	197,741	51,699,947	37.36
October	201,493	205,972	51,652,144	39.01
November	203,809	208,044	51,621,813	39.48
December	221,282	226,036	51,691,308	42.81
<i>2012</i>				
January	187,396	191,383	52,576,934	35.64
February	189,955	193,790	52,397,697	36.25
March	204,352	208,574	52,177,387	39.16
April	193,680	197,508	51,958,063	37.28
May	196,180	200,153	51,927,518	37.78
June	194,280	198,040	51,845,618	37.47
July	187,301	190,912	51,815,509	36.15
August	206,020	210,021	51,942,235	39.66
September	172,106	175,193	52,013,540	33.09

Table 2. Summary of Endoscopy Procedure in the Merative MarketScan Research Databases from October 1, 2010 to December 31, 2021, by Year and Month

	Number of Patients	Number of Episodes	Number of Eligible Members ¹	Number of Exposed Members per 10,000 Eligible Members
October	205,978	209,940	52,041,223	39.58
November	200,607	203,984	52,036,409	38.55
December	201,072	204,454	52,143,790	38.56
<i>2013</i>				
January	148,471	151,467	41,330,662	35.92
February	140,110	142,908	41,267,747	33.95
March	149,413	152,416	41,223,201	36.24
April	161,097	164,291	41,169,578	39.13
May	158,274	161,352	41,107,177	38.50
June	149,140	151,976	41,036,151	36.34
July	154,157	157,122	40,989,887	37.61
August	158,221	161,380	40,976,506	38.61
September	146,253	148,998	41,041,550	35.64
October	169,479	172,845	41,017,147	41.32
November	159,621	162,474	41,146,809	38.79
December	174,673	177,686	41,022,577	42.58
<i>2014</i>				
January	153,473	156,537	43,473,954	35.30
February	142,948	145,778	43,277,665	33.03
March	157,639	160,765	43,280,753	36.42
April	164,041	167,390	43,218,379	37.96
May	153,993	157,056	43,004,996	35.81
June	160,019	163,088	42,964,110	37.24
July	161,653	164,755	43,114,303	37.49
August	156,114	159,034	43,028,459	36.28
September	154,288	157,327	43,006,724	35.88
October	174,652	177,911	42,978,610	40.64
November	155,314	157,961	42,927,741	36.18
December	181,002	184,157	42,855,039	42.24
<i>2015</i>				
January	88,576	90,405	26,489,481	33.44
February	85,982	87,570	26,451,586	32.51
March	98,045	100,018	26,381,863	37.16
April	98,718	100,600	26,312,168	37.52
May	92,152	93,862	26,259,467	35.09
June	102,357	104,233	26,200,289	39.07

Table 2. Summary of Endoscopy Procedure in the Merative MarketScan Research Databases from October 1, 2010 to December 31, 2021, by Year and Month

	Number of Patients	Number of Episodes	Number of Eligible Members ¹	Number of Exposed Members per 10,000 Eligible Members
July	100,627	102,538	26,155,278	38.47
August	96,574	98,412	26,077,047	37.03
September	94,619	96,333	26,022,688	36.36
October	101,244	102,687	26,017,688	38.91
November	99,046	100,348	25,965,811	38.14
December	113,862	115,423	25,926,759	43.92
2016				
January	85,167	86,459	26,171,554	32.54
February	90,329	91,724	26,153,287	34.54
March	97,210	98,766	26,148,283	37.18
April	95,280	96,767	26,106,323	36.50
May	92,053	93,474	26,053,425	35.33
June	98,121	99,667	26,012,490	37.72
July	87,479	88,721	25,987,259	33.66
August	100,747	102,258	25,915,857	38.87
September	93,968	95,349	25,860,540	36.34
October	95,284	96,707	25,753,179	37.00
November	100,614	102,057	25,666,896	39.20
December	112,062	113,766	25,603,634	43.77
2017				
January	80,589	81,873	24,253,479	33.23
February	78,689	79,772	24,209,651	32.50
March	91,590	93,003	24,184,192	37.87
April	81,545	82,730	24,121,539	33.81
May	88,610	89,957	24,077,422	36.80
June	89,968	91,223	24,025,177	37.45
July	80,067	81,216	23,948,148	33.43
August	92,086	93,404	23,901,232	38.53
September	79,543	80,629	23,861,833	33.33
October	93,448	94,684	23,830,784	39.21
November	92,848	94,112	23,610,075	39.33
December	99,577	100,962	23,562,154	42.26
2018				
January	79,803	80,904	24,301,121	32.84
February	76,842	77,882	24,278,968	31.65
March	84,652	85,909	24,232,276	34.93

Table 2. Summary of Endoscopy Procedure in the Merative MarketScan Research Databases from October 1, 2010 to December 31, 2021, by Year and Month

	Number of Patients	Number of Episodes	Number of Eligible Members ¹	Number of Exposed Members per 10,000 Eligible Members
April	82,315	83,456	24,185,445	34.03
May	84,306	85,477	24,113,466	34.96
June	83,919	85,062	24,057,211	34.88
July	82,481	83,551	24,006,160	34.36
August	90,396	91,641	23,997,638	37.67
September	77,261	78,243	23,972,867	32.23
October	96,719	98,044	23,920,988	40.43
November	95,449	96,615	23,871,095	39.99
December	94,584	95,805	23,802,676	39.74
2019				
January	76,445	77,572	22,188,245	34.45
February	72,819	73,838	22,171,940	32.84
March	77,918	79,061	22,140,668	35.19
April	81,860	83,019	22,036,744	37.15
May	81,010	82,185	22,002,830	36.82
June	76,096	77,086	21,951,062	34.67
July	80,085	81,272	21,892,323	36.58
August	81,798	82,974	21,865,062	37.41
September	75,217	76,241	21,824,448	34.46
October	88,538	89,868	21,811,664	40.59
November	83,961	85,021	21,762,917	38.58
December	88,843	90,040	21,731,070	40.88
2020				
January	78,201	79,342	21,597,091	36.21
February	73,782	74,822	21,553,960	34.23
March	49,169	49,859	21,530,147	22.84
April	8,190	8,439	21,487,224	3.81
May	30,121	31,233	21,424,880	14.06
June	63,221	65,096	21,388,355	29.56
July	68,790	70,617	21,236,324	32.39
August	69,368	71,100	21,180,862	32.75
September	73,917	75,814	21,097,793	35.04
October	84,944	87,058	21,002,571	40.44
November	76,405	78,237	20,952,934	36.47
December	83,450	85,638	20,915,869	39.90

2021

Table 2. Summary of Endoscopy Procedure in the Merative MarketScan Research Databases from October 1, 2010 to December 31, 2021, by Year and Month

	Number of Patients	Number of Episodes	Number of Eligible Members ¹	Number of Exposed Members per 10,000 Eligible Members
January	59,423	61,028	19,598,561	30.32
February	59,462	61,098	19,570,182	30.38
March	74,723	76,609	19,535,326	38.25
April	74,156	75,997	19,519,760	37.99
May	69,215	70,693	19,569,498	35.37
June	76,374	77,812	19,536,298	39.09
July	71,813	72,947	19,471,442	36.88
August	72,692	73,812	19,448,365	37.38
September	69,964	71,198	19,411,991	36.04
October	76,808	78,238	19,339,254	39.72
November	78,465	79,742	19,299,376	40.66
December	81,403	82,747	19,262,996	42.26
Endoscopy Procedure ICD-10-CM Prevalence				
<i>2010</i>				
October	178,985	181,698	47,783,732	37.46
November	185,751	188,411	47,714,965	38.93
December	195,585	198,500	47,760,109	40.95
<i>2011</i>				
January	176,772	179,859	52,274,120	33.82
February	168,198	170,964	52,038,076	32.32
March	201,309	205,089	51,957,287	38.75
April	186,406	189,569	51,860,782	35.94
May	185,333	188,478	51,769,930	35.80
June	196,148	199,400	51,756,451	37.90
July	173,749	176,549	51,804,123	33.54
August	203,708	207,202	51,756,708	39.36
September	185,639	188,982	51,699,947	35.91
October	193,745	197,043	51,652,144	37.51
November	196,194	199,286	51,621,813	38.01
December	213,891	217,390	51,691,308	41.38
<i>2012</i>				
January	180,754	183,878	52,576,934	34.38
February	183,645	186,712	52,397,697	35.05
March	197,905	201,298	52,177,387	37.93
April	187,970	191,055	51,958,063	36.18
May	190,556	193,780	51,927,518	36.70

Table 2. Summary of Endoscopy Procedure in the Merative MarketScan Research Databases from October 1, 2010 to December 31, 2021, by Year and Month

	Number of Patients	Number of Episodes	Number of Eligible Members ¹	Number of Exposed Members per 10,000 Eligible Members
June	188,660	191,666	51,845,618	36.39
July	181,720	184,571	51,815,509	35.07
August	200,342	203,583	51,942,235	38.57
September	166,945	169,395	52,013,540	32.10
October	200,366	203,557	52,041,223	38.50
November	195,517	198,248	52,036,409	37.57
December	195,918	198,641	52,143,790	37.57
<i>2013</i>				
January	144,078	146,492	41,330,662	34.86
February	136,097	138,381	41,267,747	32.98
March	145,047	147,473	41,223,201	35.19
April	156,804	159,417	41,169,578	38.09
May	153,962	156,477	41,107,177	37.45
June	145,117	147,399	41,036,151	35.36
July	149,875	152,286	40,989,887	36.56
August	153,884	156,417	40,976,506	37.55
September	141,992	144,163	41,041,550	34.60
October	165,129	167,862	41,017,147	40.26
November	155,742	158,014	41,146,809	37.85
December	170,735	173,200	41,022,577	41.62
<i>2014</i>				
January	149,314	151,781	43,473,954	34.35
February	139,138	141,456	43,277,665	32.15
March	153,412	155,946	43,280,753	35.45
April	159,882	162,590	43,218,379	36.99
May	150,113	152,552	43,004,996	34.91
June	156,069	158,542	42,964,110	36.33
July	157,568	160,027	43,114,303	36.55
August	152,038	154,387	43,028,459	35.33
September	150,320	152,766	43,006,724	34.95
October	170,588	173,216	42,978,610	39.69
November	151,560	153,694	42,927,741	35.31
December	176,974	179,588	42,855,039	41.30
<i>2015</i>				
January	85,982	87,338	26,489,481	32.46
February	83,559	84,784	26,451,586	31.59

Table 2. Summary of Endoscopy Procedure in the Merative MarketScan Research Databases from October 1, 2010 to December 31, 2021, by Year and Month

	Number of Patients	Number of Episodes	Number of Eligible Members ¹	Number of Exposed Members per 10,000 Eligible Members
March	95,149	96,661	26,381,863	36.07
April	95,996	97,469	26,312,168	36.48
May	89,598	90,916	26,259,467	34.12
June	99,645	101,088	26,200,289	38.03
July	97,879	99,337	26,155,278	37.42
August	93,906	95,292	26,077,047	36.01
September	92,412	93,759	26,022,688	35.51
October	101,958	103,673	26,017,688	39.19
November	99,744	101,301	25,965,811	38.41
December	114,710	116,528	25,926,759	44.24
<i>2016</i>				
January	85,865	87,423	26,171,554	32.81
February	91,016	92,659	26,153,287	34.80
March	97,985	99,861	26,148,283	37.47
April	96,088	97,887	26,106,323	36.81
May	92,877	94,572	26,053,425	35.65
June	98,963	100,814	26,012,490	38.04
July	88,215	89,713	25,987,259	33.95
August	101,626	103,443	25,915,857	39.21
September	94,783	96,505	25,860,540	36.65
October	96,096	97,846	25,753,179	37.31
November	101,471	103,250	25,666,896	39.53
December	112,979	114,994	25,603,634	44.13
<i>2017</i>				
January	81,266	82,815	24,253,479	33.51
February	79,340	80,656	24,209,651	32.77
March	92,272	93,913	24,184,192	38.15
April	82,139	83,531	24,121,539	34.05
May	89,290	90,885	24,077,422	37.08
June	90,639	92,119	24,025,177	37.73
July	80,717	82,105	23,948,148	33.70
August	92,835	94,383	23,901,232	38.84
September	80,179	81,490	23,861,833	33.60
October	94,169	95,662	23,830,784	39.52
November	93,534	95,011	23,610,075	39.62
December	100,336	101,951	23,562,154	42.58

Table 2. Summary of Endoscopy Procedure in the Merative MarketScan Research Databases from October 1, 2010 to December 31, 2021, by Year and Month

	Number of Patients	Number of Episodes	Number of Eligible Members ¹	Number of Exposed Members per 10,000 Eligible Members
<i>2018</i>				
January	80,435	81,748	24,301,121	33.10
February	77,429	78,655	24,278,968	31.89
March	85,263	86,750	24,232,276	35.19
April	82,926	84,272	24,185,445	34.29
May	84,973	86,361	24,113,466	35.24
June	84,572	85,902	24,057,211	35.15
July	83,102	84,378	24,006,160	34.62
August	91,164	92,666	23,997,638	37.99
September	77,925	79,138	23,972,867	32.51
October	97,447	99,000	23,920,988	40.74
November	96,220	97,608	23,871,095	40.31
December	95,444	96,902	23,802,676	40.10
<i>2019</i>				
January	77,129	78,503	22,188,245	34.76
February	73,398	74,600	22,171,940	33.10
March	78,476	79,827	22,140,668	35.44
April	82,445	83,808	22,036,744	37.41
May	81,563	82,962	22,002,830	37.07
June	76,656	77,820	21,951,062	34.92
July	80,700	82,093	21,892,323	36.86
August	82,386	83,769	21,865,062	37.68
September	75,789	77,025	21,824,448	34.73
October	89,206	90,763	21,811,664	40.90
November	84,569	85,808	21,762,917	38.86
December	89,610	91,060	21,731,070	41.24
<i>2020</i>				
January	78,848	80,227	21,597,091	36.51
February	74,397	75,672	21,553,960	34.52
March	49,642	50,484	21,530,147	23.06
April	8,463	8,827	21,487,224	3.94
May	30,587	31,931	21,424,880	14.28
June	63,900	66,036	21,388,355	29.88
July	69,417	71,503	21,236,324	32.69
August	70,019	72,012	21,180,862	33.06
September	74,565	76,718	21,097,793	35.34

Table 2. Summary of Endoscopy Procedure in the Merative MarketScan Research Databases from October 1, 2010 to December 31, 2021, by Year and Month

	Number of Patients	Number of Episodes	Number of Eligible Members ¹	Number of Exposed Members per 10,000 Eligible Members
October	85,629	88,014	21,002,571	40.77
November	77,056	79,155	20,952,934	36.78
December	84,202	86,609	20,915,869	40.26
<i>2021</i>				
January	59,981	61,802	19,598,561	30.60
February	60,024	61,886	19,570,182	30.67
March	75,383	77,530	19,535,326	38.59
April	74,763	76,850	19,519,760	38.30
May	69,847	71,563	19,569,498	35.69
June	77,031	78,717	19,536,298	39.43
July	72,467	73,810	19,471,442	37.22
August	73,303	74,595	19,448,365	37.69
September	70,550	71,949	19,411,991	36.34
October	77,447	79,100	19,339,254	40.05
November	79,140	80,635	19,299,376	41.01
December	82,115	83,668	19,262,996	42.63

¹Eligible Members are reflective of the number of patients that met all cohort entry criteria on at least one day during the query period.

Figure 1. Incidence of Endoscopy Procedure (183 Days Washout) per 10,000 Eligible Members from October 2010 to December 2021 by Code Type

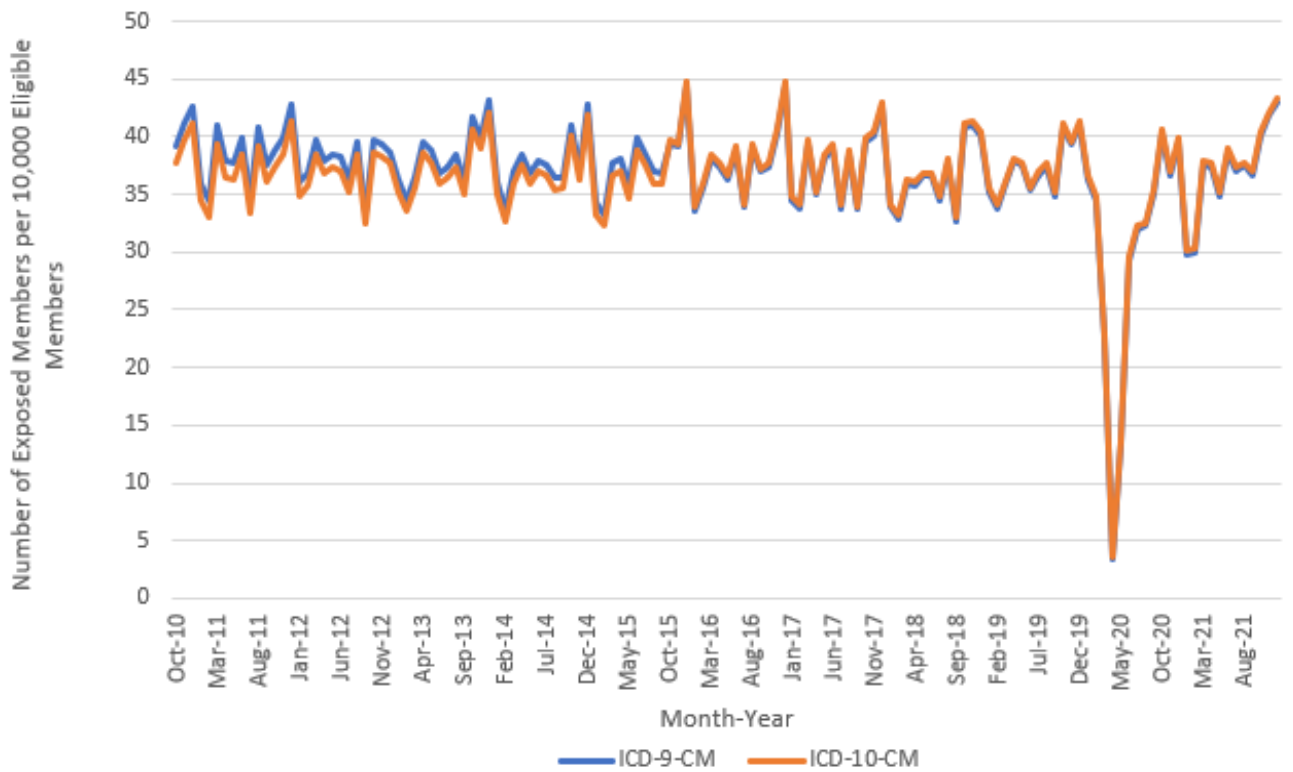
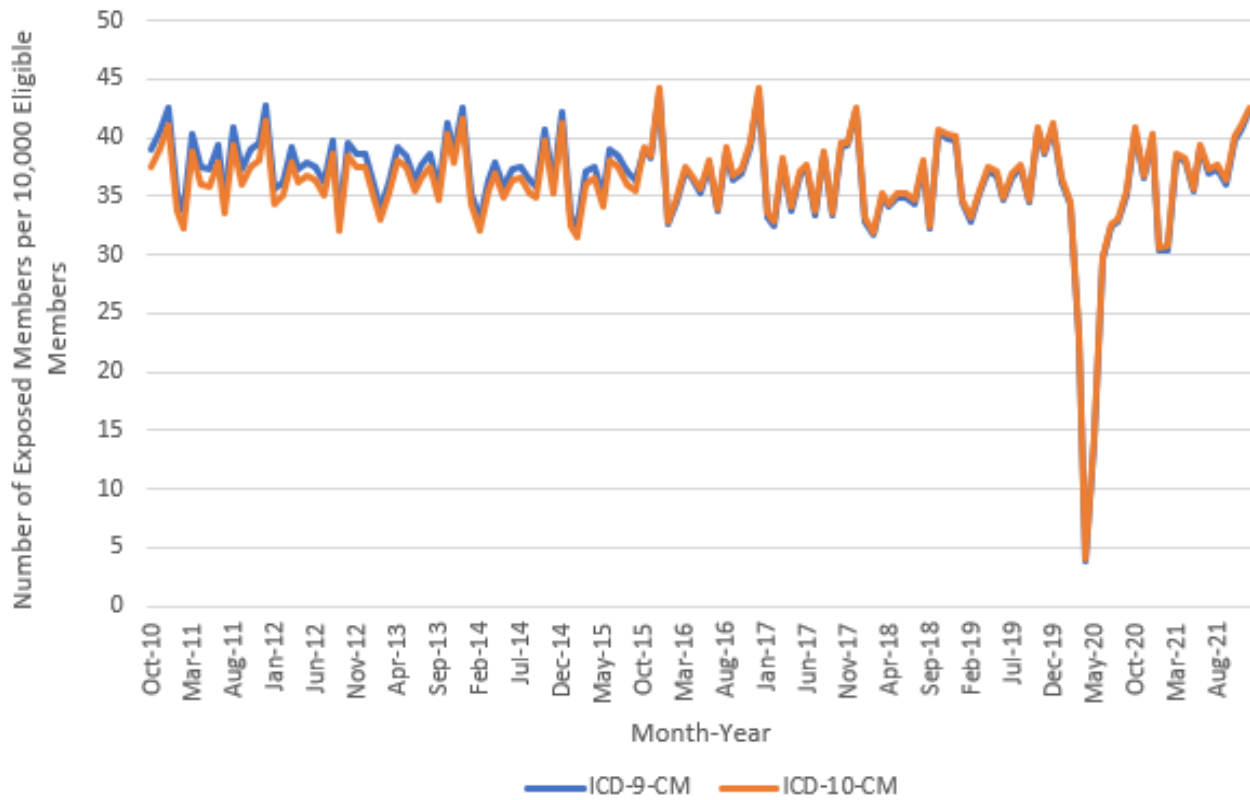


Figure 2. Prevalence of Endoscopy Procedure (0 Days Washout) per 10,000 Eligible Members from October 2010 to December 2021 by Code Type



Appendix A. Dates of Available Data for Each Data Partner (DP) as of Request Distribution Date (January 17, 2023)

Masked DP ID¹	DP Start Date	DP End Date²
DP01	01/01/2010	12/31/2021

¹Participating Data Partner(s) include(s) Merative MarketScan Research Databases.

²End Date represents the earliest of: (1) query end date, or (2) last day of the most recent month for which all of a Data Partner's data tables (enrollment, dispensing, etc.) have at least 80% of the record count relative to the prior month.

Appendix B. List of Current Procedural Terminology, Fourth Edition (CPT-4), Current Procedural Terminology, Third Edition (CPT-3), Healthcare Common Procedure Coding System, Level II (HCPCS), International Classification of Diseases, Ninth Revision, Clinical Modification (ICD-9-CM), and International Classification of Diseases, Tenth Revision, Procedural Coding System (ICD-10-PCS) Codes Used to Define Endoscopy Procedures in this Request

Code	Description	Code Category	Code Type
Endoscopy Procedure			
0355T	Gastrointestinal tract imaging, intraluminal (e.g., capsule endoscopy), colon, with interpretation and report	Procedure	CPT-3
0651T	Magnetically controlled capsule endoscopy, esophagus through stomach, including intraprocedural positioning of capsule, with interpretation and report	Procedure	CPT-3
0D9E3ZX	Drainage of Large Intestine, Percutaneous Approach, Diagnostic	Procedure	ICD-10-PCS
0D9E4ZX	Drainage of Large Intestine, Percutaneous Endoscopic Approach, Diagnostic	Procedure	ICD-10-PCS
0D9E7ZX	Drainage of Large Intestine, Via Natural or Artificial Opening, Diagnostic	Procedure	ICD-10-PCS
0D9E8ZX	Drainage of Large Intestine, Via Natural or Artificial Opening Endoscopic, Diagnostic	Procedure	ICD-10-PCS
0D9F3ZX	Drainage of Right Large Intestine, Percutaneous Approach, Diagnostic	Procedure	ICD-10-PCS
0D9F4ZX	Drainage of Right Large Intestine, Percutaneous Endoscopic Approach, Diagnostic	Procedure	ICD-10-PCS
0D9F7ZX	Drainage of Right Large Intestine, Via Natural or Artificial Opening, Diagnostic	Procedure	ICD-10-PCS
0D9F8ZX	Drainage of Right Large Intestine, Via Natural or Artificial Opening Endoscopic, Diagnostic	Procedure	ICD-10-PCS
0D9G3ZX	Drainage of Left Large Intestine, Percutaneous Approach, Diagnostic	Procedure	ICD-10-PCS
0D9G4ZX	Drainage of Left Large Intestine, Percutaneous Endoscopic Approach, Diagnostic	Procedure	ICD-10-PCS
0D9G7ZX	Drainage of Left Large Intestine, Via Natural or Artificial Opening, Diagnostic	Procedure	ICD-10-PCS
0D9G8ZX	Drainage of Left Large Intestine, Via Natural or Artificial Opening Endoscopic, Diagnostic	Procedure	ICD-10-PCS
0D9H3ZX	Drainage of Cecum, Percutaneous Approach, Diagnostic	Procedure	ICD-10-PCS
0D9H4ZX	Drainage of Cecum, Percutaneous Endoscopic Approach, Diagnostic	Procedure	ICD-10-PCS
0D9H7ZX	Drainage of Cecum, Via Natural or Artificial Opening, Diagnostic	Procedure	ICD-10-PCS
0D9H8ZX	Drainage of Cecum, Via Natural or Artificial Opening Endoscopic, Diagnostic	Procedure	ICD-10-PCS
0D9K3ZX	Drainage of Ascending Colon, Percutaneous Approach, Diagnostic	Procedure	ICD-10-PCS
0D9K4ZX	Drainage of Ascending Colon, Percutaneous Endoscopic Approach, Diagnostic	Procedure	ICD-10-PCS
0D9K7ZX	Drainage of Ascending Colon, Via Natural or Artificial Opening, Diagnostic	Procedure	ICD-10-PCS
0D9K8ZX	Drainage of Ascending Colon, Via Natural or Artificial Opening Endoscopic, Diagnostic	Procedure	ICD-10-PCS
0D9L3ZX	Drainage of Transverse Colon, Percutaneous Approach, Diagnostic	Procedure	ICD-10-PCS
0D9L4ZX	Drainage of Transverse Colon, Percutaneous Endoscopic Approach, Diagnostic	Procedure	ICD-10-PCS
0D9L7ZX	Drainage of Transverse Colon, Via Natural or Artificial Opening, Diagnostic	Procedure	ICD-10-PCS
0D9L8ZX	Drainage of Transverse Colon, Via Natural or Artificial Opening Endoscopic, Diagnostic	Procedure	ICD-10-PCS
0D9M3ZX	Drainage of Descending Colon, Percutaneous Approach, Diagnostic	Procedure	ICD-10-PCS
0D9M4ZX	Drainage of Descending Colon, Percutaneous Endoscopic Approach, Diagnostic	Procedure	ICD-10-PCS
0D9M7ZX	Drainage of Descending Colon, Via Natural or Artificial Opening, Diagnostic	Procedure	ICD-10-PCS

Appendix B. List of Current Procedural Terminology, Fourth Edition (CPT-4), Current Procedural Terminology, Third Edition (CPT-3), Healthcare Common Procedure Coding System, Level II (HCPCS), International Classification of Diseases, Ninth Revision, Clinical Modification (ICD-9-CM), and International Classification of Diseases, Tenth Revision, Procedural Coding System (ICD-10-PCS) Codes Used to Define Endoscopy Procedures in this Request

Code	Description	Code Category	Code Type
0D9M8ZX	Drainage of Descending Colon, Via Natural or Artificial Opening Endoscopic, Diagnostic	Procedure	ICD-10-PCS
0D9N0ZX	Drainage of Sigmoid Colon, Open Approach, Diagnostic	Procedure	ICD-10-PCS
0D9N3ZX	Drainage of Sigmoid Colon, Percutaneous Approach, Diagnostic	Procedure	ICD-10-PCS
0D9N4ZX	Drainage of Sigmoid Colon, Percutaneous Endoscopic Approach, Diagnostic	Procedure	ICD-10-PCS
0D9N7ZX	Drainage of Sigmoid Colon, Via Natural or Artificial Opening, Diagnostic	Procedure	ICD-10-PCS
0D9N8ZX	Drainage of Sigmoid Colon, Via Natural or Artificial Opening Endoscopic, Diagnostic	Procedure	ICD-10-PCS
0DB80ZX	Excision of Small Intestine, Open Approach, Diagnostic	Procedure	ICD-10-PCS
0DB83ZX	Excision of Small Intestine, Percutaneous Approach, Diagnostic	Procedure	ICD-10-PCS
0DB84ZX	Excision of Small Intestine, Percutaneous Endoscopic Approach, Diagnostic	Procedure	ICD-10-PCS
0DB87ZX	Excision of Small Intestine, Via Natural or Artificial Opening, Diagnostic	Procedure	ICD-10-PCS
0DB88ZX	Excision of Small Intestine, Via Natural or Artificial Opening Endoscopic, Diagnostic	Procedure	ICD-10-PCS
0DBE0ZX	Excision of Large Intestine, Open Approach, Diagnostic	Procedure	ICD-10-PCS
0DBE3ZX	Excision of Large Intestine, Percutaneous Approach, Diagnostic	Procedure	ICD-10-PCS
0DBE4ZX	Excision of Large Intestine, Percutaneous Endoscopic Approach, Diagnostic	Procedure	ICD-10-PCS
0DBE7ZX	Excision of Large Intestine, Via Natural or Artificial Opening, Diagnostic	Procedure	ICD-10-PCS
0DBE8ZX	Excision of Large Intestine, Via Natural or Artificial Opening Endoscopic, Diagnostic	Procedure	ICD-10-PCS
0DBF3ZX	Excision of Right Large Intestine, Percutaneous Approach, Diagnostic	Procedure	ICD-10-PCS
0DBF4ZX	Excision of Right Large Intestine, Percutaneous Endoscopic Approach, Diagnostic	Procedure	ICD-10-PCS
0DBF7ZX	Excision of Right Large Intestine, Via Natural or Artificial Opening, Diagnostic	Procedure	ICD-10-PCS
0DBF8ZX	Excision of Right Large Intestine, Via Natural or Artificial Opening Endoscopic, Diagnostic	Procedure	ICD-10-PCS
0DBG3ZX	Excision of Left Large Intestine, Percutaneous Approach, Diagnostic	Procedure	ICD-10-PCS
0DBG4ZX	Excision of Left Large Intestine, Percutaneous Endoscopic Approach, Diagnostic	Procedure	ICD-10-PCS
0DBG7ZX	Excision of Left Large Intestine, Via Natural or Artificial Opening, Diagnostic	Procedure	ICD-10-PCS
0DBG8ZX	Excision of Left Large Intestine, Via Natural or Artificial Opening Endoscopic, Diagnostic	Procedure	ICD-10-PCS
0DBH3ZX	Excision of Cecum, Percutaneous Approach, Diagnostic	Procedure	ICD-10-PCS
0DBH4ZX	Excision of Cecum, Percutaneous Endoscopic Approach, Diagnostic	Procedure	ICD-10-PCS
0DBH7ZX	Excision of Cecum, Via Natural or Artificial Opening, Diagnostic	Procedure	ICD-10-PCS
0DBH8ZX	Excision of Cecum, Via Natural or Artificial Opening Endoscopic, Diagnostic	Procedure	ICD-10-PCS
0DBK3ZX	Excision of Ascending Colon, Percutaneous Approach, Diagnostic	Procedure	ICD-10-PCS
0DBK4ZX	Excision of Ascending Colon, Percutaneous Endoscopic Approach, Diagnostic	Procedure	ICD-10-PCS
0DBK7ZX	Excision of Ascending Colon, Via Natural or Artificial Opening, Diagnostic	Procedure	ICD-10-PCS
0DBK8ZX	Excision of Ascending Colon, Via Natural or Artificial Opening Endoscopic, Diagnostic	Procedure	ICD-10-PCS
0DBL3ZX	Excision of Transverse Colon, Percutaneous Approach, Diagnostic	Procedure	ICD-10-PCS

Appendix B. List of Current Procedural Terminology, Fourth Edition (CPT-4), Current Procedural Terminology, Third Edition (CPT-3), Healthcare Common Procedure Coding System, Level II (HCPCS), International Classification of Diseases, Ninth Revision, Clinical Modification (ICD-9-CM), and International Classification of Diseases, Tenth Revision, Procedural Coding System (ICD-10-PCS) Codes Used to Define Endoscopy Procedures in this Request

Code	Description	Code Category	Code Type
0DBL4ZX	Excision of Transverse Colon, Percutaneous Endoscopic Approach, Diagnostic	Procedure	ICD-10-PCS
0DBL7ZX	Excision of Transverse Colon, Via Natural or Artificial Opening, Diagnostic	Procedure	ICD-10-PCS
0DBL8ZX	Excision of Transverse Colon, Via Natural or Artificial Opening Endoscopic, Diagnostic	Procedure	ICD-10-PCS
0DBM3ZX	Excision of Descending Colon, Percutaneous Approach, Diagnostic	Procedure	ICD-10-PCS
0DBM4ZX	Excision of Descending Colon, Percutaneous Endoscopic Approach, Diagnostic	Procedure	ICD-10-PCS
0DBM7ZX	Excision of Descending Colon, Via Natural or Artificial Opening, Diagnostic	Procedure	ICD-10-PCS
0DBM8ZX	Excision of Descending Colon, Via Natural or Artificial Opening Endoscopic, Diagnostic	Procedure	ICD-10-PCS
0DBN0ZX	Excision of Sigmoid Colon, Open Approach, Diagnostic	Procedure	ICD-10-PCS
0DBN3ZX	Excision of Sigmoid Colon, Percutaneous Approach, Diagnostic	Procedure	ICD-10-PCS
0DBN4ZX	Excision of Sigmoid Colon, Percutaneous Endoscopic Approach, Diagnostic	Procedure	ICD-10-PCS
0DBN7ZX	Excision of Sigmoid Colon, Via Natural or Artificial Opening, Diagnostic	Procedure	ICD-10-PCS
0DBN8ZX	Excision of Sigmoid Colon, Via Natural or Artificial Opening Endoscopic, Diagnostic	Procedure	ICD-10-PCS
0DD83ZX	Extraction of Small Intestine, Percutaneous Approach, Diagnostic	Procedure	ICD-10-PCS
0DD84ZX	Extraction of Small Intestine, Percutaneous Endoscopic Approach, Diagnostic	Procedure	ICD-10-PCS
0DD88ZX	Extraction of Small Intestine, Via Natural or Artificial Opening Endoscopic, Diagnostic	Procedure	ICD-10-PCS
0DDE3ZX	Extraction of Large Intestine, Percutaneous Approach, Diagnostic	Procedure	ICD-10-PCS
0DDE4ZX	Extraction of Large Intestine, Percutaneous Endoscopic Approach, Diagnostic	Procedure	ICD-10-PCS
0DDE8ZX	Extraction of Large Intestine, Via Natural or Artificial Opening Endoscopic, Diagnostic	Procedure	ICD-10-PCS
0DDF3ZX	Extraction of Right Large Intestine, Percutaneous Approach, Diagnostic	Procedure	ICD-10-PCS
0DDF4ZX	Extraction of Right Large Intestine, Percutaneous Endoscopic Approach, Diagnostic	Procedure	ICD-10-PCS
0DDF8ZX	Extraction of Right Large Intestine, Via Natural or Artificial Opening Endoscopic, Diagnostic	Procedure	ICD-10-PCS
0DDG	Extraction / Large Intestine, Left	Procedure	ICD-10-PCS
0DDG3ZX	Extraction of Left Large Intestine, Percutaneous Approach, Diagnostic	Procedure	ICD-10-PCS
0DDG4ZX	Extraction of Left Large Intestine, Percutaneous Endoscopic Approach, Diagnostic	Procedure	ICD-10-PCS
0DDG8ZX	Extraction of Left Large Intestine, Via Natural or Artificial Opening Endoscopic, Diagnostic	Procedure	ICD-10-PCS
0DDH3ZX	Extraction of Cecum, Percutaneous Approach, Diagnostic	Procedure	ICD-10-PCS
0DDH4ZX	Extraction of Cecum, Percutaneous Endoscopic Approach, Diagnostic	Procedure	ICD-10-PCS
0DDH8ZX	Extraction of Cecum, Via Natural or Artificial Opening Endoscopic, Diagnostic	Procedure	ICD-10-PCS
0DDK3ZX	Extraction of Ascending Colon, Percutaneous Approach, Diagnostic	Procedure	ICD-10-PCS
0DDK4ZX	Extraction of Ascending Colon, Percutaneous Endoscopic Approach, Diagnostic	Procedure	ICD-10-PCS

Appendix B. List of Current Procedural Terminology, Fourth Edition (CPT-4), Current Procedural Terminology, Third Edition (CPT-3), Healthcare Common Procedure Coding System, Level II (HCPCS), International Classification of Diseases, Ninth Revision, Clinical Modification (ICD-9-CM), and International Classification of Diseases, Tenth Revision, Procedural Coding System (ICD-10-PCS) Codes Used to Define Endoscopy Procedures in this Request

Code	Description	Code Category	Code Type
	Extraction of Ascending Colon, Via Natural or Artificial Opening Endoscopic,		
ODDK8ZX	Diagnostic	Procedure	ICD-10-PCS
ODDL3ZX	Extraction of Transverse Colon, Percutaneous Approach, Diagnostic	Procedure	ICD-10-PCS
	Extraction of Transverse Colon, Percutaneous Endoscopic Approach,		
ODDL4ZX	Diagnostic	Procedure	ICD-10-PCS
	Extraction of Transverse Colon, Via Natural or Artificial Opening Endoscopic,		
ODDL8ZX	Diagnostic	Procedure	ICD-10-PCS
ODDM3ZX	Extraction of Descending Colon, Percutaneous Approach, Diagnostic	Procedure	ICD-10-PCS
	Extraction of Descending Colon, Percutaneous Endoscopic Approach,		
ODDM4ZX	Diagnostic	Procedure	ICD-10-PCS
	Extraction of Descending Colon, Via Natural or Artificial Opening Endoscopic,		
ODDM8ZX	Diagnostic	Procedure	ICD-10-PCS
ODDN3ZX	Extraction of Sigmoid Colon, Percutaneous Approach, Diagnostic	Procedure	ICD-10-PCS
ODDN4ZX	Extraction of Sigmoid Colon, Percutaneous Endoscopic Approach, Diagnostic	Procedure	ICD-10-PCS
	Extraction of Sigmoid Colon, Via Natural or Artificial Opening Endoscopic,		
ODDN8ZX	Diagnostic	Procedure	ICD-10-PCS
ODDP3ZX	Extraction of Rectum, Percutaneous Approach, Diagnostic	Procedure	ICD-10-PCS
ODDP4ZX	Extraction of Rectum, Percutaneous Endoscopic Approach, Diagnostic	Procedure	ICD-10-PCS
	Extraction of Rectum, Via Natural or Artificial Opening Endoscopic,		
ODDP8ZX	Diagnostic	Procedure	ICD-10-PCS
ODDQ3ZX	Extraction of Anus, Percutaneous Approach, Diagnostic	Procedure	ICD-10-PCS
ODDQ4ZX	Extraction of Anus, Percutaneous Endoscopic Approach, Diagnostic	Procedure	ICD-10-PCS
ODDQ8ZX	Extraction of Anus, Via Natural or Artificial Opening Endoscopic, Diagnostic	Procedure	ICD-10-PCS
ODDQXZX	Extraction of Anus, External Approach, Diagnostic	Procedure	ICD-10-PCS
ODJ00ZZ	Inspection of Upper Intestinal Tract, Open Approach	Procedure	ICD-10-PCS
ODJ03ZZ	Inspection of Upper Intestinal Tract, Percutaneous Approach	Procedure	ICD-10-PCS
ODJ04ZZ	Inspection of Upper Intestinal Tract, Percutaneous Endoscopic Approach	Procedure	ICD-10-PCS
ODJ07ZZ	Inspection of Upper Intestinal Tract, Via Natural or Artificial Opening	Procedure	ICD-10-PCS
	Inspection of Upper Intestinal Tract, Via Natural or Artificial Opening		
ODJ08ZZ	Endoscopic	Procedure	ICD-10-PCS
ODJ0XZZ	Inspection of Upper Intestinal Tract, External Approach	Procedure	ICD-10-PCS
ODJD3ZZ	Inspection of Lower Intestinal Tract, Percutaneous Approach	Procedure	ICD-10-PCS
ODJD7ZZ	Inspection of Lower Intestinal Tract, Via Natural or Artificial Opening	Procedure	ICD-10-PCS
	Inspection of Lower Intestinal Tract, Via Natural or Artificial Opening		
ODJD8ZZ	Endoscopic	Procedure	ICD-10-PCS
42.22	Esophagoscopy through artificial stoma	Procedure	ICD-9-CM
42.23	Other esophagoscopy	Procedure	ICD-9-CM
42.24	Closed (endoscopic) biopsy of esophagus	Procedure	ICD-9-CM
43200	Esophagoscopy, flexible, transoral; diagnostic, including collection of specimen(s) by brushing or washing, when performed (separate procedure)	Procedure	CPT-4
43235	Esophagogastroduodenoscopy, flexible, transoral; diagnostic, including collection of specimen(s) by brushing or washing, when performed (separate procedure)	Procedure	CPT-4
44.14	Closed [endoscopic] biopsy of stomach	Procedure	ICD-9-CM

Appendix B. List of Current Procedural Terminology, Fourth Edition (CPT-4), Current Procedural Terminology, Third Edition (CPT-3), Healthcare Common Procedure Coding System, Level II (HCPCS), International Classification of Diseases, Ninth Revision, Clinical Modification (ICD-9-CM), and International Classification of Diseases, Tenth Revision, Procedural Coding System (ICD-10-PCS) Codes Used to Define Endoscopy Procedures in this Request

Code	Description	Code Category	Code Type
44360	Small intestinal endoscopy, enteroscopy beyond second portion of duodenum, not including ileum; diagnostic, including collection of specimen(s) by brushing or washing, when performed (separate procedure)	Procedure	CPT-4
44361	Small intestinal endoscopy, enteroscopy beyond second portion of duodenum, not including ileum; with biopsy, single or multiple	Procedure	CPT-4
44363	Small intestinal endoscopy, enteroscopy beyond second portion of duodenum, not including ileum; with removal of foreign body(s)	Procedure	CPT-4
44364	Small intestinal endoscopy, enteroscopy beyond second portion of duodenum, not including ileum; with removal of tumor(s), polyp(s), or other lesion(s) by snare technique	Procedure	CPT-4
44365	Small intestinal endoscopy, enteroscopy beyond second portion of duodenum, not including ileum; with removal of tumor(s), polyp(s), or other lesion(s) by hot biopsy forceps or bipolar cautery	Procedure	CPT-4
44366	Small intestinal endoscopy, enteroscopy beyond second portion of duodenum, not including ileum; with control of bleeding (e.g., injection, bipolar cautery, unipolar cautery, laser, heater probe, stapler, plasma coagulator)	Procedure	CPT-4
44369	Small intestinal endoscopy, enteroscopy beyond second portion of duodenum, not including ileum; with ablation of tumor(s), polyp(s), or other lesion(s) not amenable to removal by hot biopsy forceps, bipolar cautery or snare technique	Procedure	CPT-4
44370	Small intestinal endoscopy, enteroscopy beyond second portion of duodenum, not including ileum; with transendoscopic stent placement (includes predilation)	Procedure	CPT-4
44372	Small intestinal endoscopy, enteroscopy beyond second portion of duodenum, not including ileum; with placement of percutaneous jejunostomy tube	Procedure	CPT-4
44373	Small intestinal endoscopy, enteroscopy beyond second portion of duodenum, not including ileum; with conversion of percutaneous gastrostomy tube to percutaneous jejunostomy tube	Procedure	CPT-4
44376	Small intestinal endoscopy, enteroscopy beyond second portion of duodenum, including ileum; diagnostic, with or without collection of specimen(s) by brushing or washing (separate procedure)	Procedure	CPT-4
44377	Small intestinal endoscopy, enteroscopy beyond second portion of duodenum, including ileum; with biopsy, single or multiple	Procedure	CPT-4
44378	Small intestinal endoscopy, enteroscopy beyond second portion of duodenum, including ileum; with control of bleeding (e.g., injection, bipolar cautery, unipolar cautery, laser, heater probe, stapler, plasma coagulator)	Procedure	CPT-4
44379	Small intestinal endoscopy, enteroscopy beyond second portion of duodenum, including ileum; with transendoscopic stent placement (includes predilation)	Procedure	CPT-4
44388	Colonoscopy through stoma; diagnostic, including collection of specimen(s) by brushing or washing, when performed (separate procedure)	Procedure	CPT-4
44389	Colonoscopy through stoma; with biopsy, single or multiple	Procedure	CPT-4
44390	Colonoscopy through stoma; with removal of foreign body(s)	Procedure	CPT-4

Appendix B. List of Current Procedural Terminology, Fourth Edition (CPT-4), Current Procedural Terminology, Third Edition (CPT-3), Healthcare Common Procedure Coding System, Level II (HCPCS), International Classification of Diseases, Ninth Revision, Clinical Modification (ICD-9-CM), and International Classification of Diseases, Tenth Revision, Procedural Coding System (ICD-10-PCS) Codes Used to Define Endoscopy Procedures in this Request

Code	Description	Code Category	Code Type
44391	Colonoscopy through stoma; with control of bleeding, any method	Procedure	CPT-4
44392	Colonoscopy through stoma; with removal of tumor(s), polyp(s), or other lesion(s) by hot biopsy forceps	Procedure	CPT-4
44393	Colonoscopy through stoma; with ablation of tumor(s), polyp(s), or other lesion(s) not amenable to removal by hot biopsy forceps, bipolar cautery or snare technique	Procedure	CPT-4
44394	Colonoscopy through stoma; with removal of tumor(s), polyp(s), or other lesion(s) by snare technique	Procedure	CPT-4
44397	Colonoscopy through stoma; with transendoscopic stent placement (includes predilation)	Procedure	CPT-4
44401	Colonoscopy through stoma; with ablation of tumor(s), polyp(s), or other lesion(s) (includes pre-and post-dilation and guide wire passage, when performed)	Procedure	CPT-4
44402	Colonoscopy through stoma; with endoscopic stent placement (including pre-and post-dilation and guide wire passage, when performed)	Procedure	CPT-4
44403	Colonoscopy through stoma; with endoscopic mucosal resection	Procedure	CPT-4
44404	Colonoscopy through stoma; with directed submucosal injection(s), any substance	Procedure	CPT-4
44405	Colonoscopy through stoma; with transendoscopic balloon dilation	Procedure	CPT-4
44406	Colonoscopy through stoma; with endoscopic ultrasound examination, limited to the sigmoid, descending, transverse, or ascending colon and cecum and adjacent structures	Procedure	CPT-4
44407	Colonoscopy through stoma; with transendoscopic ultrasound guided intramural or transmural fine needle aspiration/biopsy(s), includes endoscopic ultrasound examination limited to the sigmoid, descending, transverse, or ascending colon and cecum and adjacent structures	Procedure	CPT-4
44408	Colonoscopy through stoma; with decompression (for pathologic distention) (e.g., volvulus, megacolon), including placement of decompression tube, when performed	Procedure	CPT-4
45.11	Transabdominal endoscopy of small intestine	Procedure	ICD-9-CM
45.13	Other endoscopy of small intestine	Procedure	ICD-9-CM
45.14	Closed [endoscopic] biopsy of small intestine	Procedure	ICD-9-CM
45.16	Esophagogastroduodenoscopy (EGD) with closed biopsy	Procedure	ICD-9-CM
45.19	Other diagnostic procedures on small intestine	Procedure	ICD-9-CM
45.21	Transabdominal endoscopy of large intestine	Procedure	ICD-9-CM
45.22	Endoscopy of large intestine through artificial stoma	Procedure	ICD-9-CM
45.23	Colonoscopy	Procedure	ICD-9-CM
45.24	Flexible sigmoidoscopy	Procedure	ICD-9-CM
45.25	Closed [endoscopic] biopsy of large intestine	Procedure	ICD-9-CM
45.27	Intestinal biopsy, site unspecified	Procedure	ICD-9-CM
45300	Proctosigmoidoscopy, rigid; diagnostic, with or without collection of specimen(s) by brushing or washing (separate procedure)	Procedure	CPT-4
45302	PROCTOSIGMOIDOSCOPY; COLLECT SPECIMEN BRUSH/WASH	Procedure	CPT-4
45303	Proctosigmoidoscopy, rigid; with dilation (e.g., balloon, guide wire, bougie)	Procedure	CPT-4
45305	Proctosigmoidoscopy, rigid; with biopsy, single or multiple	Procedure	CPT-4

Appendix B. List of Current Procedural Terminology, Fourth Edition (CPT-4), Current Procedural Terminology, Third Edition (CPT-3), Healthcare Common Procedure Coding System, Level II (HCPCS), International Classification of Diseases, Ninth Revision, Clinical Modification (ICD-9-CM), and International Classification of Diseases, Tenth Revision, Procedural Coding System (ICD-10-PCS) Codes Used to Define Endoscopy Procedures in this Request

Code	Description	Code Category	Code Type
45307	Proctosigmoidoscopy, rigid; with removal of foreign body	Procedure	CPT-4
45308	Proctosigmoidoscopy, rigid; with removal of single tumor, polyp, or other lesion by hot biopsy forceps or bipolar cautery	Procedure	CPT-4
45309	Proctosigmoidoscopy, rigid; with removal of single tumor, polyp, or other lesion by snare technique	Procedure	CPT-4
45310	PROCTOSIGMOIDOSCOPY; REMOVAL POLYP/PAPILLOMA	Procedure	CPT-4
45315	Proctosigmoidoscopy, rigid; with removal of multiple tumors, polyps, or other lesions by hot biopsy forceps, bipolar cautery or snare technique	Procedure	CPT-4
45317	Proctosigmoidoscopy, rigid; with control of bleeding (e.g., injection, bipolar cautery, unipolar cautery, laser, heater probe, stapler, plasma coagulator)	Procedure	CPT-4
45320	Proctosigmoidoscopy, rigid; with ablation of tumor(s), polyp(s), or other lesion(s) not amenable to removal by hot biopsy forceps, bipolar cautery or snare technique (e.g., laser)	Procedure	CPT-4
45321	Proctosigmoidoscopy, rigid; with decompression of volvulus	Procedure	CPT-4
45327	Proctosigmoidoscopy, rigid; with transendoscopic stent placement (includes predilation)	Procedure	CPT-4
45330	Sigmoidoscopy, flexible; diagnostic, including collection of specimen(s) by brushing or washing, when performed (separate procedure)	Procedure	CPT-4
45331	Sigmoidoscopy, flexible; with biopsy, single or multiple	Procedure	CPT-4
45332	Sigmoidoscopy, flexible; with removal of foreign body(s)	Procedure	CPT-4
45333	Sigmoidoscopy, flexible; with removal of tumor(s), polyp(s), or other lesion(s) by hot biopsy forceps	Procedure	CPT-4
45334	Sigmoidoscopy, flexible; with control of bleeding, any method	Procedure	CPT-4
45335	Sigmoidoscopy, flexible; with directed submucosal injection(s), any substance	Procedure	CPT-4
45336	SIGMOIDOSCOPY; ABLATE TUMOR MUCOSAL LESION	Procedure	CPT-4
45337	Sigmoidoscopy, flexible; with decompression (for pathologic distention) (e.g., volvulus, megacolon), including placement of decompression tube, when performed	Procedure	CPT-4
45338	Sigmoidoscopy, flexible; with removal of tumor(s), polyp(s), or other lesion(s) by snare technique	Procedure	CPT-4
45339	Sigmoidoscopy, flexible; with ablation of tumor(s), polyp(s), or other lesion(s) not amenable to removal by hot biopsy forceps, bipolar cautery or snare technique	Procedure	CPT-4
45340	Sigmoidoscopy, flexible; with transendoscopic balloon dilation	Procedure	CPT-4
45341	Sigmoidoscopy, flexible; with endoscopic ultrasound examination	Procedure	CPT-4
45342	Sigmoidoscopy, flexible; with transendoscopic ultrasound guided intramural or transmural fine needle aspiration/biopsy(s)	Procedure	CPT-4
45345	Sigmoidoscopy, flexible; with transendoscopic stent placement (includes predilation)	Procedure	CPT-4
45346	Sigmoidoscopy, flexible; with ablation of tumor(s), polyp(s), or other lesion(s) (includes pre- and post-dilation and guide wire passage, when performed)	Procedure	CPT-4
45347	Sigmoidoscopy, flexible; with placement of endoscopic stent (includes pre- and post-dilation and guide wire passage, when performed)	Procedure	CPT-4

Appendix B. List of Current Procedural Terminology, Fourth Edition (CPT-4), Current Procedural Terminology, Third Edition (CPT-3), Healthcare Common Procedure Coding System, Level II (HCPCS), International Classification of Diseases, Ninth Revision, Clinical Modification (ICD-9-CM), and International Classification of Diseases, Tenth Revision, Procedural Coding System (ICD-10-PCS) Codes Used to Define Endoscopy Procedures in this Request

Code	Description	Code Category	Code Type
45349	Sigmoidoscopy, flexible; with endoscopic mucosal resection	Procedure	CPT-4
45350	Sigmoidoscopy, flexible; with band ligation(s) (e.g., hemorrhoids)	Procedure	CPT-4
45355	Colonoscopy, rigid or flexible, transabdominal via colotomy, single or multiple	Procedure	CPT-4
45378	Colonoscopy, flexible; diagnostic, including collection of specimen(s) by brushing or washing, when performed (separate procedure)	Procedure	CPT-4
45379	Colonoscopy, flexible; with removal of foreign body(s)	Procedure	CPT-4
45380	Colonoscopy, flexible; with biopsy, single or multiple	Procedure	CPT-4
45381	Colonoscopy, flexible; with directed submucosal injection(s), any substance	Procedure	CPT-4
45382	Colonoscopy, flexible; with control of bleeding, any method	Procedure	CPT-4
45383	Colonoscopy, flexible, proximal to splenic flexure; with ablation of tumor(s), polyp(s), or other lesion(s) not amenable to removal by hot biopsy forceps, bipolar cautery or snare technique	Procedure	CPT-4
45384	Colonoscopy, flexible; with removal of tumor(s), polyp(s), or other lesion(s) by hot biopsy forceps	Procedure	CPT-4
45385	Colonoscopy, flexible; with removal of tumor(s), polyp(s), or other lesion(s) by snare technique	Procedure	CPT-4
45386	Colonoscopy, flexible; with transendoscopic balloon dilation	Procedure	CPT-4
45387	Colonoscopy, flexible, proximal to splenic flexure; with transendoscopic stent placement (includes predilation)	Procedure	CPT-4
45388	Colonoscopy, flexible; with ablation of tumor(s), polyp(s), or other lesion(s) (includes pre- and post-dilation and guide wire passage, when performed)	Procedure	CPT-4
45389	Colonoscopy, flexible; with endoscopic stent placement (includes pre- and post-dilation and guide wire passage, when performed)	Procedure	CPT-4
45390	Colonoscopy, flexible; with endoscopic mucosal resection	Procedure	CPT-4
45391	Colonoscopy, flexible; with endoscopic ultrasound examination limited to the rectum, sigmoid, descending, transverse, or ascending colon and cecum, and adjacent structures	Procedure	CPT-4
45392	Colonoscopy, flexible; with transendoscopic ultrasound guided intramural or transmural fine needle aspiration/biopsy(s), includes endoscopic ultrasound examination limited to the rectum, sigmoid, descending, transverse, or ascending colon and cecum, and adjacent structures	Procedure	CPT-4
45393	Colonoscopy, flexible; with decompression (for pathologic distention) (e.g., volvulus, megacolon), including placement of decompression tube, when performed	Procedure	CPT-4
45398	Colonoscopy, flexible; with band ligation(s) (e.g., hemorrhoids)	Procedure	CPT-4
48.21	Transabdominal proctosigmoidoscopy	Procedure	ICD-9-CM
48.22	Proctosigmoidoscopy through artificial stoma	Procedure	ICD-9-CM
48.23	Rigid proctosigmoidoscopy	Procedure	ICD-9-CM
49.21	Anoscopy	Procedure	ICD-9-CM
91110	Gastrointestinal tract imaging, intraluminal (e.g., capsule endoscopy), esophagus through ileum, with interpretation and report	Procedure	CPT-4
91111	Gastrointestinal tract imaging, intraluminal (e.g., capsule endoscopy), esophagus with interpretation and report	Procedure	CPT-4

Appendix B. List of Current Procedural Terminology, Fourth Edition (CPT-4), Current Procedural Terminology, Third Edition (CPT-3), Healthcare Common Procedure Coding System, Level II (HCPCS), International Classification of Diseases, Ninth Revision, Clinical Modification (ICD-9-CM), and International Classification of Diseases, Tenth Revision, Procedural Coding System (ICD-10-PCS) Codes Used to Define Endoscopy Procedures in this Request

Code	Description	Code Category	Code Type
91113	Gastrointestinal tract imaging, intraluminal (e.g., capsule endoscopy), colon, with interpretation and report	Procedure	CPT-4
G0104	Colorectal cancer screening; flexible sigmoidoscopy	Procedure	HCPCS
G0105	Colorectal cancer screening; colonoscopy on individual at high risk	Procedure	HCPCS
G0106	Colorectal cancer screening; alternative to G0104, screening sigmoidoscopy, barium enema	Procedure	HCPCS
G0120	Colorectal cancer screening; alternative to G0105, screening colonoscopy, barium enema	Procedure	HCPCS
G0121	Colorectal cancer screening; colonoscopy on individual not meeting criteria for high risk	Procedure	HCPCS
G6022	Sigmoidoscopy, flexible; with ablation of tumor(s), polyp(s), or other lesions(s) not amenable to removal by hot biopsy forceps, bipolar cautery or snare technique	Procedure	CPT-4
G6023	Sigmoidoscopy, flexible; with transendoscopic stent placement (includes predilation)	Procedure	CPT-4
G9659	Patients greater than or equal to 86 years of age who underwent a screening colonoscopy and did not have a history of colorectal cancer or other valid medical reason for the colonoscopy, including: iron deficiency anemia, lower gastrointestinal bleeding, Crohn's disease (i.e., regional enteritis), familial adenomatous polyposis, Lynch syndrome (i.e., hereditary nonpolyposis colorectal cancer), inflammatory bowel disease, ulcerative colitis, abnormal finding of gastrointestinal tract, or changes in bowel habits	Procedure	HCPCS
G9660	Documentation of medical reason(s) for a colonoscopy performed on a patient greater than or equal to 86 years of age (e.g., iron deficiency anemia, lower gastrointestinal bleeding, Crohn's disease (i.e., regional enteritis), familial history of adenomatous polyposis, Lynch syndrome (i.e., hereditary nonpolyposis colorectal cancer), inflammatory bowel disease, ulcerative colitis, abnormal finding of gastrointestinal tract, or changes in bowel habits)	Procedure	HCPCS
G9661	Patients greater than or equal to 86 years of age who received a colonoscopy for an assessment of signs/symptoms of GI tract illness, and/or because the patient meets high risk criteria, and/or to follow-up on previously diagnosed advanced lesions	Procedure	HCPCS
G9933	Adenoma(s) or colorectal cancer detected during screening colonoscopy	Procedure	HCPCS
G9935	Adenoma(s) or colorectal cancer not detected during screening colonoscopy	Procedure	HCPCS
G9936	Surveillance colonoscopy - personal history of colonic polyps, colon cancer, or other malignant neoplasm of rectum, rectosigmoid junction, and anus	Procedure	HCPCS
G9937	Diagnostic colonoscopy	Procedure	HCPCS
S0285	Colonoscopy consultation performed prior to a screening colonoscopy procedure	Procedure	HCPCS
Endoscopy Procedure ICD-9-CM and HCPCS/CPT			
0355T	Gastrointestinal tract imaging, intraluminal (e.g., capsule endoscopy), colon, with interpretation and report	Procedure	CPT-3

Appendix B. List of Current Procedural Terminology, Fourth Edition (CPT-4), Current Procedural Terminology, Third Edition (CPT-3), Healthcare Common Procedure Coding System, Level II (HCPCS), International Classification of Diseases, Ninth Revision, Clinical Modification (ICD-9-CM), and International Classification of Diseases, Tenth Revision, Procedural Coding System (ICD-10-PCS) Codes Used to Define Endoscopy Procedures in this Request

Code	Description	Code Category	Code Type
0651T	Magnetically controlled capsule endoscopy, esophagus through stomach, including intraprocedural positioning of capsule, with interpretation and report	Procedure	CPT-3
42.22	Esophagoscopy through artificial stoma	Procedure	ICD-9-CM
42.23	Other esophagoscopy	Procedure	ICD-9-CM
42.24	Closed (endoscopic) biopsy of esophagus	Procedure	ICD-9-CM
43200	Esophagoscopy, flexible, transoral; diagnostic, including collection of specimen(s) by brushing or washing, when performed (separate procedure)	Procedure	CPT-4
43235	Esophagogastroduodenoscopy, flexible, transoral; diagnostic, including collection of specimen(s) by brushing or washing, when performed (separate procedure)	Procedure	CPT-4
44.14	Closed [endoscopic] biopsy of stomach	Procedure	ICD-9-CM
44360	Small intestinal endoscopy, enteroscopy beyond second portion of duodenum, not including ileum; diagnostic, including collection of specimen(s) by brushing or washing, when performed (separate procedure)	Procedure	CPT-4
44361	Small intestinal endoscopy, enteroscopy beyond second portion of duodenum, not including ileum; with biopsy, single or multiple	Procedure	CPT-4
44363	Small intestinal endoscopy, enteroscopy beyond second portion of duodenum, not including ileum; with removal of foreign body(s)	Procedure	CPT-4
44364	Small intestinal endoscopy, enteroscopy beyond second portion of duodenum, not including ileum; with removal of tumor(s), polyp(s), or other lesion(s) by snare technique	Procedure	CPT-4
44365	Small intestinal endoscopy, enteroscopy beyond second portion of duodenum, not including ileum; with removal of tumor(s), polyp(s), or other lesion(s) by hot biopsy forceps or bipolar cautery	Procedure	CPT-4
44366	Small intestinal endoscopy, enteroscopy beyond second portion of duodenum, not including ileum; with control of bleeding (e.g., injection, bipolar cautery, unipolar cautery, laser, heater probe, stapler, plasma coagulator)	Procedure	CPT-4
44369	Small intestinal endoscopy, enteroscopy beyond second portion of duodenum, not including ileum; with ablation of tumor(s), polyp(s), or other lesion(s) not amenable to removal by hot biopsy forceps, bipolar cautery or snare technique	Procedure	CPT-4
44370	Small intestinal endoscopy, enteroscopy beyond second portion of duodenum, not including ileum; with transendoscopic stent placement (includes predilation)	Procedure	CPT-4
44372	Small intestinal endoscopy, enteroscopy beyond second portion of duodenum, not including ileum; with placement of percutaneous jejunostomy tube	Procedure	CPT-4
44373	Small intestinal endoscopy, enteroscopy beyond second portion of duodenum, not including ileum; with conversion of percutaneous gastrostomy tube to percutaneous jejunostomy tube	Procedure	CPT-4
44376	Small intestinal endoscopy, enteroscopy beyond second portion of duodenum, including ileum; diagnostic, with or without collection of specimen(s) by brushing or washing (separate procedure)	Procedure	CPT-4

Appendix B. List of Current Procedural Terminology, Fourth Edition (CPT-4), Current Procedural Terminology, Third Edition (CPT-3), Healthcare Common Procedure Coding System, Level II (HCPCS), International Classification of Diseases, Ninth Revision, Clinical Modification (ICD-9-CM), and International Classification of Diseases, Tenth Revision, Procedural Coding System (ICD-10-PCS) Codes Used to Define Endoscopy Procedures in this Request

Code	Description	Code Category	Code Type
44377	Small intestinal endoscopy, enteroscopy beyond second portion of duodenum, including ileum; with biopsy, single or multiple	Procedure	CPT-4
44378	Small intestinal endoscopy, enteroscopy beyond second portion of duodenum, including ileum; with control of bleeding (e.g., injection, bipolar cautery, unipolar cautery, laser, heater probe, stapler, plasma coagulator)	Procedure	CPT-4
44379	Small intestinal endoscopy, enteroscopy beyond second portion of duodenum, including ileum; with transendoscopic stent placement (includes predilation)	Procedure	CPT-4
44388	Colonoscopy through stoma; diagnostic, including collection of specimen(s) by brushing or washing, when performed (separate procedure)	Procedure	CPT-4
44389	Colonoscopy through stoma; with biopsy, single or multiple	Procedure	CPT-4
44390	Colonoscopy through stoma; with removal of foreign body(s)	Procedure	CPT-4
44391	Colonoscopy through stoma; with control of bleeding, any method	Procedure	CPT-4
44392	Colonoscopy through stoma; with removal of tumor(s), polyp(s), or other lesion(s) by hot biopsy forceps	Procedure	CPT-4
44393	Colonoscopy through stoma; with ablation of tumor(s), polyp(s), or other lesion(s) not amenable to removal by hot biopsy forceps, bipolar cautery or snare technique	Procedure	CPT-4
44394	Colonoscopy through stoma; with removal of tumor(s), polyp(s), or other lesion(s) by snare technique	Procedure	CPT-4
44397	Colonoscopy through stoma; with transendoscopic stent placement (includes predilation)	Procedure	CPT-4
44401	Colonoscopy through stoma; with ablation of tumor(s), polyp(s), or other lesion(s) (includes pre-and post-dilation and guide wire passage, when performed)	Procedure	CPT-4
44402	Colonoscopy through stoma; with endoscopic stent placement (including pre-and post-dilation and guide wire passage, when performed)	Procedure	CPT-4
44403	Colonoscopy through stoma; with endoscopic mucosal resection	Procedure	CPT-4
44404	Colonoscopy through stoma; with directed submucosal injection(s), any substance	Procedure	CPT-4
44405	Colonoscopy through stoma; with transendoscopic balloon dilation	Procedure	CPT-4
44406	Colonoscopy through stoma; with endoscopic ultrasound examination, limited to the sigmoid, descending, transverse, or ascending colon and cecum and adjacent structures	Procedure	CPT-4
44407	Colonoscopy through stoma; with transendoscopic ultrasound guided intramural or transmural fine needle aspiration/biopsy(s), includes endoscopic ultrasound examination limited to the sigmoid, descending, transverse, or ascending colon and cecum and adjacent structures	Procedure	CPT-4
44408	Colonoscopy through stoma; with decompression (for pathologic distention) (e.g., volvulus, megacolon), including placement of decompression tube, when performed	Procedure	CPT-4
45.11	Transabdominal endoscopy of small intestine	Procedure	ICD-9-CM
45.13	Other endoscopy of small intestine	Procedure	ICD-9-CM
45.14	Closed [endoscopic] biopsy of small intestine	Procedure	ICD-9-CM
45.16	Esophagogastroduodenoscopy (EGD) with closed biopsy	Procedure	ICD-9-CM

Appendix B. List of Current Procedural Terminology, Fourth Edition (CPT-4), Current Procedural Terminology, Third Edition (CPT-3), Healthcare Common Procedure Coding System, Level II (HCPCS), International Classification of Diseases, Ninth Revision, Clinical Modification (ICD-9-CM), and International Classification of Diseases, Tenth Revision, Procedural Coding System (ICD-10-PCS) Codes Used to Define Endoscopy Procedures in this Request

Code	Description	Code Category	Code Type
45.19	Other diagnostic procedures on small intestine	Procedure	ICD-9-CM
45.21	Transabdominal endoscopy of large intestine	Procedure	ICD-9-CM
45.22	Endoscopy of large intestine through artificial stoma	Procedure	ICD-9-CM
45.23	Colonoscopy	Procedure	ICD-9-CM
45.24	Flexible sigmoidoscopy	Procedure	ICD-9-CM
45.25	Closed [endoscopic] biopsy of large intestine	Procedure	ICD-9-CM
45.27	Intestinal biopsy, site unspecified	Procedure	ICD-9-CM
45300	Proctosigmoidoscopy, rigid; diagnostic, with or without collection of specimen(s) by brushing or washing (separate procedure)	Procedure	CPT-4
45302	PROCTOSIGMOIDOSCOPY; COLLECT SPECIMEN BRUSH/WASH	Procedure	CPT-4
45303	Proctosigmoidoscopy, rigid; with dilation (e.g., balloon, guide wire, bougie)	Procedure	CPT-4
45305	Proctosigmoidoscopy, rigid; with biopsy, single or multiple	Procedure	CPT-4
45307	Proctosigmoidoscopy, rigid; with removal of foreign body	Procedure	CPT-4
45308	Proctosigmoidoscopy, rigid; with removal of single tumor, polyp, or other lesion by hot biopsy forceps or bipolar cautery	Procedure	CPT-4
45309	Proctosigmoidoscopy, rigid; with removal of single tumor, polyp, or other lesion by snare technique	Procedure	CPT-4
45310	PROCTOSIGMOIDOSCOPY; REMOVAL POLYP/PAPILLOMA	Procedure	CPT-4
45315	Proctosigmoidoscopy, rigid; with removal of multiple tumors, polyps, or other lesions by hot biopsy forceps, bipolar cautery or snare technique	Procedure	CPT-4
45317	Proctosigmoidoscopy, rigid; with control of bleeding (e.g., injection, bipolar cautery, unipolar cautery, laser, heater probe, stapler, plasma coagulator)	Procedure	CPT-4
45320	Proctosigmoidoscopy, rigid; with ablation of tumor(s), polyp(s), or other lesion(s) not amenable to removal by hot biopsy forceps, bipolar cautery or snare technique (e.g., laser)	Procedure	CPT-4
45321	Proctosigmoidoscopy, rigid; with decompression of volvulus	Procedure	CPT-4
45327	Proctosigmoidoscopy, rigid; with transendoscopic stent placement (includes predilation)	Procedure	CPT-4
45330	Sigmoidoscopy, flexible; diagnostic, including collection of specimen(s) by brushing or washing, when performed (separate procedure)	Procedure	CPT-4
45331	Sigmoidoscopy, flexible; with biopsy, single or multiple	Procedure	CPT-4
45332	Sigmoidoscopy, flexible; with removal of foreign body(s)	Procedure	CPT-4
45333	Sigmoidoscopy, flexible; with removal of tumor(s), polyp(s), or other lesion(s) by hot biopsy forceps	Procedure	CPT-4
45334	Sigmoidoscopy, flexible; with control of bleeding, any method	Procedure	CPT-4
45335	Sigmoidoscopy, flexible; with directed submucosal injection(s), any substance	Procedure	CPT-4
45336	SIGMOIDOSCOPY; ABLATE TUMOR MUCOSAL LESION	Procedure	CPT-4
45337	Sigmoidoscopy, flexible; with decompression (for pathologic distention) (e.g., volvulus, megacolon), including placement of decompression tube, when performed	Procedure	CPT-4
45338	Sigmoidoscopy, flexible; with removal of tumor(s), polyp(s), or other lesion(s) by snare technique	Procedure	CPT-4

Appendix B. List of Current Procedural Terminology, Fourth Edition (CPT-4), Current Procedural Terminology, Third Edition (CPT-3), Healthcare Common Procedure Coding System, Level II (HCPCS), International Classification of Diseases, Ninth Revision, Clinical Modification (ICD-9-CM), and International Classification of Diseases, Tenth Revision, Procedural Coding System (ICD-10-PCS) Codes Used to Define Endoscopy Procedures in this Request

Code	Description	Code Category	Code Type
	Sigmoidoscopy, flexible; with ablation of tumor(s), polyp(s), or other lesion(s) not amenable to removal by hot biopsy forceps, bipolar cautery or snare technique	Procedure	CPT-4
45339		Procedure	CPT-4
45340	Sigmoidoscopy, flexible; with transendoscopic balloon dilation	Procedure	CPT-4
45341	Sigmoidoscopy, flexible; with endoscopic ultrasound examination	Procedure	CPT-4
45342	Sigmoidoscopy, flexible; with transendoscopic ultrasound guided intramural or transmural fine needle aspiration/biopsy(s)	Procedure	CPT-4
45345	Sigmoidoscopy, flexible; with transendoscopic stent placement (includes predilation)	Procedure	CPT-4
45346	Sigmoidoscopy, flexible; with ablation of tumor(s), polyp(s), or other lesion(s) (includes pre- and post-dilation and guide wire passage, when performed)	Procedure	CPT-4
45347	Sigmoidoscopy, flexible; with placement of endoscopic stent (includes pre- and post-dilation and guide wire passage, when performed)	Procedure	CPT-4
45349	Sigmoidoscopy, flexible; with endoscopic mucosal resection	Procedure	CPT-4
45350	Sigmoidoscopy, flexible; with band ligation(s) (e.g., hemorrhoids)	Procedure	CPT-4
45355	Colonoscopy, rigid or flexible, transabdominal via colotomy, single or multiple	Procedure	CPT-4
45378	Colonoscopy, flexible; diagnostic, including collection of specimen(s) by brushing or washing, when performed (separate procedure)	Procedure	CPT-4
45379	Colonoscopy, flexible; with removal of foreign body(s)	Procedure	CPT-4
45380	Colonoscopy, flexible; with biopsy, single or multiple	Procedure	CPT-4
45381	Colonoscopy, flexible; with directed submucosal injection(s), any substance	Procedure	CPT-4
45382	Colonoscopy, flexible; with control of bleeding, any method	Procedure	CPT-4
45383	Colonoscopy, flexible, proximal to splenic flexure; with ablation of tumor(s), polyp(s), or other lesion(s) not amenable to removal by hot biopsy forceps, bipolar cautery or snare technique	Procedure	CPT-4
45384	Colonoscopy, flexible; with removal of tumor(s), polyp(s), or other lesion(s) by hot biopsy forceps	Procedure	CPT-4
45385	Colonoscopy, flexible; with removal of tumor(s), polyp(s), or other lesion(s) by snare technique	Procedure	CPT-4
45386	Colonoscopy, flexible; with transendoscopic balloon dilation	Procedure	CPT-4
45387	Colonoscopy, flexible, proximal to splenic flexure; with transendoscopic stent placement (includes predilation)	Procedure	CPT-4
45388	Colonoscopy, flexible; with ablation of tumor(s), polyp(s), or other lesion(s) (includes pre- and post-dilation and guide wire passage, when performed)	Procedure	CPT-4
45389	Colonoscopy, flexible; with endoscopic stent placement (includes pre- and post-dilation and guide wire passage, when performed)	Procedure	CPT-4
45390	Colonoscopy, flexible; with endoscopic mucosal resection	Procedure	CPT-4
45391	Colonoscopy, flexible; with endoscopic ultrasound examination limited to the rectum, sigmoid, descending, transverse, or ascending colon and cecum, and adjacent structures	Procedure	CPT-4

Appendix B. List of Current Procedural Terminology, Fourth Edition (CPT-4), Current Procedural Terminology, Third Edition (CPT-3), Healthcare Common Procedure Coding System, Level II (HCPCS), International Classification of Diseases, Ninth Revision, Clinical Modification (ICD-9-CM), and International Classification of Diseases, Tenth Revision, Procedural Coding System (ICD-10-PCS) Codes Used to Define Endoscopy Procedures in this Request

Code	Description	Code Category	Code Type
45392	Colonoscopy, flexible; with transendoscopic ultrasound guided intramural or transmural fine needle aspiration/biopsy(s), includes endoscopic ultrasound examination limited to the rectum, sigmoid, descending, transverse, or ascending colon and cecum, and adjacent structures	Procedure	CPT-4
45393	Colonoscopy, flexible; with decompression (for pathologic distention) (e.g., volvulus, megacolon), including placement of decompression tube, when performed	Procedure	CPT-4
45398	Colonoscopy, flexible; with band ligation(s) (e.g., hemorrhoids)	Procedure	CPT-4
48.21	Transabdominal proctosigmoidoscopy	Procedure	ICD-9-CM
48.22	Proctosigmoidoscopy through artificial stoma	Procedure	ICD-9-CM
48.23	Rigid proctosigmoidoscopy	Procedure	ICD-9-CM
49.21	Anoscopy	Procedure	ICD-9-CM
91110	Gastrointestinal tract imaging, intraluminal (e.g., capsule endoscopy), esophagus through ileum, with interpretation and report	Procedure	CPT-4
91111	Gastrointestinal tract imaging, intraluminal (e.g., capsule endoscopy), esophagus with interpretation and report	Procedure	CPT-4
91113	Gastrointestinal tract imaging, intraluminal (e.g., capsule endoscopy), colon, with interpretation and report	Procedure	CPT-4
G0104	Colorectal cancer screening; flexible sigmoidoscopy	Procedure	HCPCS
G0105	Colorectal cancer screening; colonoscopy on individual at high risk	Procedure	HCPCS
G0106	Colorectal cancer screening; alternative to G0104, screening sigmoidoscopy, barium enema	Procedure	HCPCS
G0120	Colorectal cancer screening; alternative to G0105, screening colonoscopy, barium enema	Procedure	HCPCS
G0121	Colorectal cancer screening; colonoscopy on individual not meeting criteria for high risk	Procedure	HCPCS
G6022	Sigmoidoscopy, flexible; with ablation of tumor(s), polyp(s), or other lesions(s) not amenable to removal by hot biopsy forceps, bipolar cautery or snare technique	Procedure	CPT-4
G6023	Sigmoidoscopy, flexible; with transendoscopic stent placement (includes predilation)	Procedure	CPT-4
G9659	Patients greater than or equal to 86 years of age who underwent a screening colonoscopy and did not have a history of colorectal cancer or other valid medical reason for the colonoscopy, including: iron deficiency anemia, lower gastrointestinal bleeding, Crohn's disease (i.e., regional enteritis), familial adenomatous polyposis, Lynch syndrome (i.e., hereditary nonpolyposis colorectal cancer), inflammatory bowel disease, ulcerative colitis, abnormal finding of gastrointestinal tract, or changes in bowel habits	Procedure	HCPCS

Appendix B. List of Current Procedural Terminology, Fourth Edition (CPT-4), Current Procedural Terminology, Third Edition (CPT-3), Healthcare Common Procedure Coding System, Level II (HCPCS), International Classification of Diseases, Ninth Revision, Clinical Modification (ICD-9-CM), and International Classification of Diseases, Tenth Revision, Procedural Coding System (ICD-10-PCS) Codes Used to Define Endoscopy Procedures in this Request

Code	Description	Code Category	Code Type
G9660	Documentation of medical reason(s) for a colonoscopy performed on a patient greater than or equal to 86 years of age (e.g., iron deficiency anemia, lower gastrointestinal bleeding, Crohn's disease (i.e., regional enteritis), familial history of adenomatous polyposis, Lynch syndrome (i.e., hereditary nonpolyposis colorectal cancer), inflammatory bowel disease, ulcerative colitis, abnormal finding of gastrointestinal tract, or changes in bowel habits) Patients greater than or equal to 86 years of age who received a colonoscopy for an assessment of signs/symptoms of GI tract illness, and/or because the patient meets high risk criteria, and/or to follow-up on	Procedure	HCPCS
G9661	previously diagnosed advanced lesions	Procedure	HCPCS
G9933	Adenoma(s) or colorectal cancer detected during screening colonoscopy	Procedure	HCPCS
G9935	Adenoma(s) or colorectal cancer not detected during screening colonoscopy	Procedure	HCPCS
G9936	Surveillance colonoscopy - personal history of colonic polyps, colon cancer, or other malignant neoplasm of rectum, rectosigmoid junction, and anus	Procedure	HCPCS
G9937	Diagnostic colonoscopy	Procedure	HCPCS
S0285	Colonoscopy consultation performed prior to a screening colonoscopy procedure	Procedure	HCPCS
Endoscopy Procedure ICD-10-CM and HCPCS/CPT			
0355T	Gastrointestinal tract imaging, intraluminal (e.g., capsule endoscopy), colon, with interpretation and report	Procedure	CPT-3
0651T	Magnetically controlled capsule endoscopy, esophagus through stomach, including intraprocedural positioning of capsule, with interpretation and report	Procedure	CPT-3
0D9E3ZX	Drainage of Large Intestine, Percutaneous Approach, Diagnostic	Procedure	ICD-10-PCS
0D9E4ZX	Drainage of Large Intestine, Percutaneous Endoscopic Approach, Diagnostic	Procedure	ICD-10-PCS
0D9E7ZX	Drainage of Large Intestine, Via Natural or Artificial Opening, Diagnostic	Procedure	ICD-10-PCS
0D9E8ZX	Drainage of Large Intestine, Via Natural or Artificial Opening Endoscopic, Diagnostic	Procedure	ICD-10-PCS
0D9F3ZX	Drainage of Right Large Intestine, Percutaneous Approach, Diagnostic	Procedure	ICD-10-PCS
0D9F4ZX	Drainage of Right Large Intestine, Percutaneous Endoscopic Approach, Diagnostic	Procedure	ICD-10-PCS
0D9F7ZX	Drainage of Right Large Intestine, Via Natural or Artificial Opening, Diagnostic	Procedure	ICD-10-PCS
0D9F8ZX	Drainage of Right Large Intestine, Via Natural or Artificial Opening Endoscopic, Diagnostic	Procedure	ICD-10-PCS
0D9G3ZX	Drainage of Left Large Intestine, Percutaneous Approach, Diagnostic	Procedure	ICD-10-PCS
0D9G4ZX	Drainage of Left Large Intestine, Percutaneous Endoscopic Approach, Diagnostic	Procedure	ICD-10-PCS
0D9G7ZX	Drainage of Left Large Intestine, Via Natural or Artificial Opening, Diagnostic	Procedure	ICD-10-PCS
0D9G8ZX	Drainage of Left Large Intestine, Via Natural or Artificial Opening Endoscopic, Diagnostic	Procedure	ICD-10-PCS
0D9H3ZX	Drainage of Cecum, Percutaneous Approach, Diagnostic	Procedure	ICD-10-PCS
0D9H4ZX	Drainage of Cecum, Percutaneous Endoscopic Approach, Diagnostic	Procedure	ICD-10-PCS
0D9H7ZX	Drainage of Cecum, Via Natural or Artificial Opening, Diagnostic	Procedure	ICD-10-PCS

Appendix B. List of Current Procedural Terminology, Fourth Edition (CPT-4), Current Procedural Terminology, Third Edition (CPT-3), Healthcare Common Procedure Coding System, Level II (HCPCS), International Classification of Diseases, Ninth Revision, Clinical Modification (ICD-9-CM), and International Classification of Diseases, Tenth Revision, Procedural Coding System (ICD-10-PCS) Codes Used to Define Endoscopy Procedures in this Request

Code	Description	Code Category	Code Type
0D9H8ZX	Drainage of Cecum, Via Natural or Artificial Opening Endoscopic, Diagnostic	Procedure	ICD-10-PCS
0D9K3ZX	Drainage of Ascending Colon, Percutaneous Approach, Diagnostic Drainage of Ascending Colon, Percutaneous Endoscopic Approach,	Procedure	ICD-10-PCS
0D9K4ZX	Diagnostic	Procedure	ICD-10-PCS
0D9K7ZX	Drainage of Ascending Colon, Via Natural or Artificial Opening, Diagnostic Drainage of Ascending Colon, Via Natural or Artificial Opening Endoscopic,	Procedure	ICD-10-PCS
0D9K8ZX	Diagnostic	Procedure	ICD-10-PCS
0D9L3ZX	Drainage of Transverse Colon, Percutaneous Approach, Diagnostic Drainage of Transverse Colon, Percutaneous Endoscopic Approach,	Procedure	ICD-10-PCS
0D9L4ZX	Diagnostic	Procedure	ICD-10-PCS
0D9L7ZX	Drainage of Transverse Colon, Via Natural or Artificial Opening, Diagnostic Drainage of Transverse Colon, Via Natural or Artificial Opening Endoscopic,	Procedure	ICD-10-PCS
0D9L8ZX	Diagnostic	Procedure	ICD-10-PCS
0D9M3ZX	Drainage of Descending Colon, Percutaneous Approach, Diagnostic Drainage of Descending Colon, Percutaneous Endoscopic Approach,	Procedure	ICD-10-PCS
0D9M4ZX	Diagnostic	Procedure	ICD-10-PCS
0D9M7ZX	Drainage of Descending Colon, Via Natural or Artificial Opening, Diagnostic Drainage of Descending Colon, Via Natural or Artificial Opening Endoscopic,	Procedure	ICD-10-PCS
0D9M8ZX	Diagnostic	Procedure	ICD-10-PCS
0D9N0ZX	Drainage of Sigmoid Colon, Open Approach, Diagnostic	Procedure	ICD-10-PCS
0D9N3ZX	Drainage of Sigmoid Colon, Percutaneous Approach, Diagnostic	Procedure	ICD-10-PCS
0D9N4ZX	Drainage of Sigmoid Colon, Percutaneous Endoscopic Approach, Diagnostic	Procedure	ICD-10-PCS
0D9N7ZX	Drainage of Sigmoid Colon, Via Natural or Artificial Opening, Diagnostic Drainage of Sigmoid Colon, Via Natural or Artificial Opening Endoscopic,	Procedure	ICD-10-PCS
0D9N8ZX	Diagnostic	Procedure	ICD-10-PCS
0DB80ZX	Excision of Small Intestine, Open Approach, Diagnostic	Procedure	ICD-10-PCS
0DB83ZX	Excision of Small Intestine, Percutaneous Approach, Diagnostic	Procedure	ICD-10-PCS
0DB84ZX	Excision of Small Intestine, Percutaneous Endoscopic Approach, Diagnostic	Procedure	ICD-10-PCS
0DB87ZX	Excision of Small Intestine, Via Natural or Artificial Opening, Diagnostic Excision of Small Intestine, Via Natural or Artificial Opening Endoscopic,	Procedure	ICD-10-PCS
0DB88ZX	Diagnostic	Procedure	ICD-10-PCS
0DBE0ZX	Excision of Large Intestine, Open Approach, Diagnostic	Procedure	ICD-10-PCS
0DBE3ZX	Excision of Large Intestine, Percutaneous Approach, Diagnostic	Procedure	ICD-10-PCS
0DBE4ZX	Excision of Large Intestine, Percutaneous Endoscopic Approach, Diagnostic	Procedure	ICD-10-PCS
0DBE7ZX	Excision of Large Intestine, Via Natural or Artificial Opening, Diagnostic Excision of Large Intestine, Via Natural or Artificial Opening Endoscopic,	Procedure	ICD-10-PCS
0DBE8ZX	Diagnostic	Procedure	ICD-10-PCS
0DBF3ZX	Excision of Right Large Intestine, Percutaneous Approach, Diagnostic Excision of Right Large Intestine, Percutaneous Endoscopic Approach,	Procedure	ICD-10-PCS
0DBF4ZX	Diagnostic	Procedure	ICD-10-PCS
0DBF7ZX	Excision of Right Large Intestine, Via Natural or Artificial Opening, Diagnostic Excision of Right Large Intestine, Via Natural or Artificial Opening	Procedure	ICD-10-PCS
0DBF8ZX	Endoscopic, Diagnostic	Procedure	ICD-10-PCS
0DBG3ZX	Excision of Left Large Intestine, Percutaneous Approach, Diagnostic	Procedure	ICD-10-PCS

Appendix B. List of Current Procedural Terminology, Fourth Edition (CPT-4), Current Procedural Terminology, Third Edition (CPT-3), Healthcare Common Procedure Coding System, Level II (HCPCS), International Classification of Diseases, Ninth Revision, Clinical Modification (ICD-9-CM), and International Classification of Diseases, Tenth Revision, Procedural Coding System (ICD-10-PCS) Codes Used to Define Endoscopy Procedures in this Request

Code	Description	Code Category	Code Type
	Excision of Left Large Intestine, Percutaneous Endoscopic Approach,		
0DBG4ZX	Diagnostic	Procedure	ICD-10-PCS
0DBG7ZX	Excision of Left Large Intestine, Via Natural or Artificial Opening, Diagnostic	Procedure	ICD-10-PCS
	Excision of Left Large Intestine, Via Natural or Artificial Opening Endoscopic,		
0DBG8ZX	Diagnostic	Procedure	ICD-10-PCS
0DBH3ZX	Excision of Cecum, Percutaneous Approach, Diagnostic	Procedure	ICD-10-PCS
0DBH4ZX	Excision of Cecum, Percutaneous Endoscopic Approach, Diagnostic	Procedure	ICD-10-PCS
0DBH7ZX	Excision of Cecum, Via Natural or Artificial Opening, Diagnostic	Procedure	ICD-10-PCS
0DBH8ZX	Excision of Cecum, Via Natural or Artificial Opening Endoscopic, Diagnostic	Procedure	ICD-10-PCS
0DBK3ZX	Excision of Ascending Colon, Percutaneous Approach, Diagnostic	Procedure	ICD-10-PCS
0DBK4ZX	Excision of Ascending Colon, Percutaneous Endoscopic Approach, Diagnostic	Procedure	ICD-10-PCS
0DBK7ZX	Excision of Ascending Colon, Via Natural or Artificial Opening, Diagnostic	Procedure	ICD-10-PCS
	Excision of Ascending Colon, Via Natural or Artificial Opening Endoscopic,		
0DBK8ZX	Diagnostic	Procedure	ICD-10-PCS
0DBL3ZX	Excision of Transverse Colon, Percutaneous Approach, Diagnostic	Procedure	ICD-10-PCS
0DBL4ZX	Excision of Transverse Colon, Percutaneous Endoscopic Approach, Diagnostic	Procedure	ICD-10-PCS
0DBL7ZX	Excision of Transverse Colon, Via Natural or Artificial Opening, Diagnostic	Procedure	ICD-10-PCS
	Excision of Transverse Colon, Via Natural or Artificial Opening Endoscopic,		
0DBL8ZX	Diagnostic	Procedure	ICD-10-PCS
0DBM3ZX	Excision of Descending Colon, Percutaneous Approach, Diagnostic	Procedure	ICD-10-PCS
	Excision of Descending Colon, Percutaneous Endoscopic Approach,		
0DBM4ZX	Diagnostic	Procedure	ICD-10-PCS
0DBM7ZX	Excision of Descending Colon, Via Natural or Artificial Opening, Diagnostic	Procedure	ICD-10-PCS
	Excision of Descending Colon, Via Natural or Artificial Opening Endoscopic,		
0DBM8ZX	Diagnostic	Procedure	ICD-10-PCS
0DBN0ZX	Excision of Sigmoid Colon, Open Approach, Diagnostic	Procedure	ICD-10-PCS
0DBN3ZX	Excision of Sigmoid Colon, Percutaneous Approach, Diagnostic	Procedure	ICD-10-PCS
0DBN4ZX	Excision of Sigmoid Colon, Percutaneous Endoscopic Approach, Diagnostic	Procedure	ICD-10-PCS
0DBN7ZX	Excision of Sigmoid Colon, Via Natural or Artificial Opening, Diagnostic	Procedure	ICD-10-PCS
	Excision of Sigmoid Colon, Via Natural or Artificial Opening Endoscopic,		
0DBN8ZX	Diagnostic	Procedure	ICD-10-PCS
0DD83ZX	Extraction of Small Intestine, Percutaneous Approach, Diagnostic	Procedure	ICD-10-PCS
0DD84ZX	Extraction of Small Intestine, Percutaneous Endoscopic Approach, Diagnostic	Procedure	ICD-10-PCS
	Extraction of Small Intestine, Via Natural or Artificial Opening Endoscopic,		
0DD88ZX	Diagnostic	Procedure	ICD-10-PCS
0DDE3ZX	Extraction of Large Intestine, Percutaneous Approach, Diagnostic	Procedure	ICD-10-PCS
0DDE4ZX	Extraction of Large Intestine, Percutaneous Endoscopic Approach, Diagnostic	Procedure	ICD-10-PCS
	Extraction of Large Intestine, Via Natural or Artificial Opening Endoscopic,		
0DDE8ZX	Diagnostic	Procedure	ICD-10-PCS
0DDF3ZX	Extraction of Right Large Intestine, Percutaneous Approach, Diagnostic	Procedure	ICD-10-PCS

Appendix B. List of Current Procedural Terminology, Fourth Edition (CPT-4), Current Procedural Terminology, Third Edition (CPT-3), Healthcare Common Procedure Coding System, Level II (HCPCS), International Classification of Diseases, Ninth Revision, Clinical Modification (ICD-9-CM), and International Classification of Diseases, Tenth Revision, Procedural Coding System (ICD-10-PCS) Codes Used to Define Endoscopy Procedures in this Request

Code	Description	Code Category	Code Type
ODDF4ZX	Extraction of Right Large Intestine, Percutaneous Endoscopic Approach, Diagnostic	Procedure	ICD-10-PCS
ODDF8ZX	Extraction of Right Large Intestine, Via Natural or Artificial Opening Endoscopic, Diagnostic	Procedure	ICD-10-PCS
ODDG	Extraction / Large Intestine, Left	Procedure	ICD-10-PCS
ODDG3ZX	Extraction of Left Large Intestine, Percutaneous Approach, Diagnostic	Procedure	ICD-10-PCS
ODDG4ZX	Extraction of Left Large Intestine, Percutaneous Endoscopic Approach, Diagnostic	Procedure	ICD-10-PCS
ODDG8ZX	Extraction of Left Large Intestine, Via Natural or Artificial Opening Endoscopic, Diagnostic	Procedure	ICD-10-PCS
ODDH3ZX	Extraction of Cecum, Percutaneous Approach, Diagnostic	Procedure	ICD-10-PCS
ODDH4ZX	Extraction of Cecum, Percutaneous Endoscopic Approach, Diagnostic	Procedure	ICD-10-PCS
ODDH8ZX	Extraction of Cecum, Via Natural or Artificial Opening Endoscopic, Diagnostic	Procedure	ICD-10-PCS
ODDK3ZX	Extraction of Ascending Colon, Percutaneous Approach, Diagnostic	Procedure	ICD-10-PCS
ODDK4ZX	Extraction of Ascending Colon, Percutaneous Endoscopic Approach, Diagnostic	Procedure	ICD-10-PCS
ODDK8ZX	Extraction of Ascending Colon, Via Natural or Artificial Opening Endoscopic, Diagnostic	Procedure	ICD-10-PCS
ODDL3ZX	Extraction of Transverse Colon, Percutaneous Approach, Diagnostic	Procedure	ICD-10-PCS
ODDL4ZX	Extraction of Transverse Colon, Percutaneous Endoscopic Approach, Diagnostic	Procedure	ICD-10-PCS
ODDL8ZX	Extraction of Transverse Colon, Via Natural or Artificial Opening Endoscopic, Diagnostic	Procedure	ICD-10-PCS
ODDM3ZX	Extraction of Descending Colon, Percutaneous Approach, Diagnostic	Procedure	ICD-10-PCS
ODDM4ZX	Extraction of Descending Colon, Percutaneous Endoscopic Approach, Diagnostic	Procedure	ICD-10-PCS
ODDM8ZX	Extraction of Descending Colon, Via Natural or Artificial Opening Endoscopic, Diagnostic	Procedure	ICD-10-PCS
ODDN3ZX	Extraction of Sigmoid Colon, Percutaneous Approach, Diagnostic	Procedure	ICD-10-PCS
ODDN4ZX	Extraction of Sigmoid Colon, Percutaneous Endoscopic Approach, Diagnostic	Procedure	ICD-10-PCS
ODDN8ZX	Extraction of Sigmoid Colon, Via Natural or Artificial Opening Endoscopic, Diagnostic	Procedure	ICD-10-PCS
ODDP3ZX	Extraction of Rectum, Percutaneous Approach, Diagnostic	Procedure	ICD-10-PCS
ODDP4ZX	Extraction of Rectum, Percutaneous Endoscopic Approach, Diagnostic	Procedure	ICD-10-PCS
ODDP8ZX	Extraction of Rectum, Via Natural or Artificial Opening Endoscopic, Diagnostic	Procedure	ICD-10-PCS
ODDQ3ZX	Extraction of Anus, Percutaneous Approach, Diagnostic	Procedure	ICD-10-PCS
ODDQ4ZX	Extraction of Anus, Percutaneous Endoscopic Approach, Diagnostic	Procedure	ICD-10-PCS
ODDQ8ZX	Extraction of Anus, Via Natural or Artificial Opening Endoscopic, Diagnostic	Procedure	ICD-10-PCS
ODDQXZX	Extraction of Anus, External Approach, Diagnostic	Procedure	ICD-10-PCS
ODJ00ZZ	Inspection of Upper Intestinal Tract, Open Approach	Procedure	ICD-10-PCS
ODJ03ZZ	Inspection of Upper Intestinal Tract, Percutaneous Approach	Procedure	ICD-10-PCS
ODJ04ZZ	Inspection of Upper Intestinal Tract, Percutaneous Endoscopic Approach	Procedure	ICD-10-PCS
ODJ07ZZ	Inspection of Upper Intestinal Tract, Via Natural or Artificial Opening	Procedure	ICD-10-PCS

Appendix B. List of Current Procedural Terminology, Fourth Edition (CPT-4), Current Procedural Terminology, Third Edition (CPT-3), Healthcare Common Procedure Coding System, Level II (HCPCS), International Classification of Diseases, Ninth Revision, Clinical Modification (ICD-9-CM), and International Classification of Diseases, Tenth Revision, Procedural Coding System (ICD-10-PCS) Codes Used to Define Endoscopy Procedures in this Request

Code	Description	Code Category	Code Type
	Inspection of Upper Intestinal Tract, Via Natural or Artificial Opening		
0DJ08ZZ	Endoscopic	Procedure	ICD-10-PCS
0DJ0XZZ	Inspection of Upper Intestinal Tract, External Approach	Procedure	ICD-10-PCS
0DJD3ZZ	Inspection of Lower Intestinal Tract, Percutaneous Approach	Procedure	ICD-10-PCS
0DJD7ZZ	Inspection of Lower Intestinal Tract, Via Natural or Artificial Opening	Procedure	ICD-10-PCS
0DJD8ZZ	Inspection of Lower Intestinal Tract, Via Natural or Artificial Opening Endoscopic	Procedure	ICD-10-PCS
43200	Esophagoscopy, flexible, transoral; diagnostic, including collection of specimen(s) by brushing or washing, when performed (separate procedure)	Procedure	CPT-4
43235	Esophagogastroduodenoscopy, flexible, transoral; diagnostic, including collection of specimen(s) by brushing or washing, when performed (separate procedure)	Procedure	CPT-4
44360	Small intestinal endoscopy, enteroscopy beyond second portion of duodenum, not including ileum; diagnostic, including collection of specimen(s) by brushing or washing, when performed (separate procedure)	Procedure	CPT-4
44361	Small intestinal endoscopy, enteroscopy beyond second portion of duodenum, not including ileum; with biopsy, single or multiple	Procedure	CPT-4
44363	Small intestinal endoscopy, enteroscopy beyond second portion of duodenum, not including ileum; with removal of foreign body(s)	Procedure	CPT-4
44364	Small intestinal endoscopy, enteroscopy beyond second portion of duodenum, not including ileum; with removal of tumor(s), polyp(s), or other lesion(s) by snare technique	Procedure	CPT-4
44365	Small intestinal endoscopy, enteroscopy beyond second portion of duodenum, not including ileum; with removal of tumor(s), polyp(s), or other lesion(s) by hot biopsy forceps or bipolar cautery	Procedure	CPT-4
44366	Small intestinal endoscopy, enteroscopy beyond second portion of duodenum, not including ileum; with control of bleeding (e.g., injection, bipolar cautery, unipolar cautery, laser, heater probe, stapler, plasma coagulator)	Procedure	CPT-4
44369	Small intestinal endoscopy, enteroscopy beyond second portion of duodenum, not including ileum; with ablation of tumor(s), polyp(s), or other lesion(s) not amenable to removal by hot biopsy forceps, bipolar cautery or snare technique	Procedure	CPT-4
44370	Small intestinal endoscopy, enteroscopy beyond second portion of duodenum, not including ileum; with transendoscopic stent placement (includes predilation)	Procedure	CPT-4
44372	Small intestinal endoscopy, enteroscopy beyond second portion of duodenum, not including ileum; with placement of percutaneous jejunostomy tube	Procedure	CPT-4
44373	Small intestinal endoscopy, enteroscopy beyond second portion of duodenum, not including ileum; with conversion of percutaneous gastrostomy tube to percutaneous jejunostomy tube	Procedure	CPT-4
44376	Small intestinal endoscopy, enteroscopy beyond second portion of duodenum, including ileum; diagnostic, with or without collection of specimen(s) by brushing or washing (separate procedure)	Procedure	CPT-4

Appendix B. List of Current Procedural Terminology, Fourth Edition (CPT-4), Current Procedural Terminology, Third Edition (CPT-3), Healthcare Common Procedure Coding System, Level II (HCPCS), International Classification of Diseases, Ninth Revision, Clinical Modification (ICD-9-CM), and International Classification of Diseases, Tenth Revision, Procedural Coding System (ICD-10-PCS) Codes Used to Define Endoscopy Procedures in this Request

Code	Description	Code Category	Code Type
44377	Small intestinal endoscopy, enteroscopy beyond second portion of duodenum, including ileum; with biopsy, single or multiple	Procedure	CPT-4
44378	Small intestinal endoscopy, enteroscopy beyond second portion of duodenum, including ileum; with control of bleeding (e.g., injection, bipolar cautery, unipolar cautery, laser, heater probe, stapler, plasma coagulator)	Procedure	CPT-4
44379	Small intestinal endoscopy, enteroscopy beyond second portion of duodenum, including ileum; with transendoscopic stent placement (includes predilation)	Procedure	CPT-4
44388	Colonoscopy through stoma; diagnostic, including collection of specimen(s) by brushing or washing, when performed (separate procedure)	Procedure	CPT-4
44389	Colonoscopy through stoma; with biopsy, single or multiple	Procedure	CPT-4
44390	Colonoscopy through stoma; with removal of foreign body(s)	Procedure	CPT-4
44391	Colonoscopy through stoma; with control of bleeding, any method	Procedure	CPT-4
44392	Colonoscopy through stoma; with removal of tumor(s), polyp(s), or other lesion(s) by hot biopsy forceps	Procedure	CPT-4
44393	Colonoscopy through stoma; with ablation of tumor(s), polyp(s), or other lesion(s) not amenable to removal by hot biopsy forceps, bipolar cautery or snare technique	Procedure	CPT-4
44394	Colonoscopy through stoma; with removal of tumor(s), polyp(s), or other lesion(s) by snare technique	Procedure	CPT-4
44397	Colonoscopy through stoma; with transendoscopic stent placement (includes predilation)	Procedure	CPT-4
44401	Colonoscopy through stoma; with ablation of tumor(s), polyp(s), or other lesion(s) (includes pre-and post-dilation and guide wire passage, when performed)	Procedure	CPT-4
44402	Colonoscopy through stoma; with endoscopic stent placement (including pre-and post-dilation and guide wire passage, when performed)	Procedure	CPT-4
44403	Colonoscopy through stoma; with endoscopic mucosal resection	Procedure	CPT-4
44404	Colonoscopy through stoma; with directed submucosal injection(s), any substance	Procedure	CPT-4
44405	Colonoscopy through stoma; with transendoscopic balloon dilation	Procedure	CPT-4
44406	Colonoscopy through stoma; with endoscopic ultrasound examination, limited to the sigmoid, descending, transverse, or ascending colon and cecum and adjacent structures	Procedure	CPT-4
44407	Colonoscopy through stoma; with transendoscopic ultrasound guided intramural or transmural fine needle aspiration/biopsy(s), includes endoscopic ultrasound examination limited to the sigmoid, descending, transverse, or ascending colon and cecum and adjacent structures	Procedure	CPT-4
44408	Colonoscopy through stoma; with decompression (for pathologic distention) (e.g., volvulus, megacolon), including placement of decompression tube, when performed	Procedure	CPT-4
45300	Proctosigmoidoscopy, rigid; diagnostic, with or without collection of specimen(s) by brushing or washing (separate procedure)	Procedure	CPT-4
45302	PROCTOSIGMOIDOSCOPY; COLLECT SPECIMEN BRUSH/WASH	Procedure	CPT-4
45303	Proctosigmoidoscopy, rigid; with dilation (e.g., balloon, guide wire, bougie)	Procedure	CPT-4

Appendix B. List of Current Procedural Terminology, Fourth Edition (CPT-4), Current Procedural Terminology, Third Edition (CPT-3), Healthcare Common Procedure Coding System, Level II (HCPCS), International Classification of Diseases, Ninth Revision, Clinical Modification (ICD-9-CM), and International Classification of Diseases, Tenth Revision, Procedural Coding System (ICD-10-PCS) Codes Used to Define Endoscopy Procedures in this Request

Code	Description	Code Category	Code Type
45305	Proctosigmoidoscopy, rigid; with biopsy, single or multiple	Procedure	CPT-4
45307	Proctosigmoidoscopy, rigid; with removal of foreign body	Procedure	CPT-4
45308	Proctosigmoidoscopy, rigid; with removal of single tumor, polyp, or other lesion by hot biopsy forceps or bipolar cautery	Procedure	CPT-4
45309	Proctosigmoidoscopy, rigid; with removal of single tumor, polyp, or other lesion by snare technique	Procedure	CPT-4
45310	PROCTOSIGMOIDOSCOPY; REMOVAL POLYP/PAPILLOMA	Procedure	CPT-4
45315	Proctosigmoidoscopy, rigid; with removal of multiple tumors, polyps, or other lesions by hot biopsy forceps, bipolar cautery or snare technique	Procedure	CPT-4
45317	Proctosigmoidoscopy, rigid; with control of bleeding (e.g., injection, bipolar cautery, unipolar cautery, laser, heater probe, stapler, plasma coagulator)	Procedure	CPT-4
45320	Proctosigmoidoscopy, rigid; with ablation of tumor(s), polyp(s), or other lesion(s) not amenable to removal by hot biopsy forceps, bipolar cautery or snare technique (e.g., laser)	Procedure	CPT-4
45321	Proctosigmoidoscopy, rigid; with decompression of volvulus	Procedure	CPT-4
45327	Proctosigmoidoscopy, rigid; with transendoscopic stent placement (includes predilation)	Procedure	CPT-4
45330	Sigmoidoscopy, flexible; diagnostic, including collection of specimen(s) by brushing or washing, when performed (separate procedure)	Procedure	CPT-4
45331	Sigmoidoscopy, flexible; with biopsy, single or multiple	Procedure	CPT-4
45332	Sigmoidoscopy, flexible; with removal of foreign body(s)	Procedure	CPT-4
45333	Sigmoidoscopy, flexible; with removal of tumor(s), polyp(s), or other lesion(s) by hot biopsy forceps	Procedure	CPT-4
45334	Sigmoidoscopy, flexible; with control of bleeding, any method	Procedure	CPT-4
45335	Sigmoidoscopy, flexible; with directed submucosal injection(s), any substance	Procedure	CPT-4
45336	SIGMOIDOSCOPY; ABLATE TUMOR MUCOSAL LESION	Procedure	CPT-4
45337	Sigmoidoscopy, flexible; with decompression (for pathologic distention) (e.g., volvulus, megacolon), including placement of decompression tube, when performed	Procedure	CPT-4
45338	Sigmoidoscopy, flexible; with removal of tumor(s), polyp(s), or other lesion(s) by snare technique	Procedure	CPT-4
45339	Sigmoidoscopy, flexible; with ablation of tumor(s), polyp(s), or other lesion(s) not amenable to removal by hot biopsy forceps, bipolar cautery or snare technique	Procedure	CPT-4
45340	Sigmoidoscopy, flexible; with transendoscopic balloon dilation	Procedure	CPT-4
45341	Sigmoidoscopy, flexible; with endoscopic ultrasound examination	Procedure	CPT-4
45342	Sigmoidoscopy, flexible; with transendoscopic ultrasound guided intramural or transmural fine needle aspiration/biopsy(s)	Procedure	CPT-4
45345	Sigmoidoscopy, flexible; with transendoscopic stent placement (includes predilation)	Procedure	CPT-4
45346	Sigmoidoscopy, flexible; with ablation of tumor(s), polyp(s), or other lesion(s) (includes pre- and post-dilation and guide wire passage, when performed)	Procedure	CPT-4

Appendix B. List of Current Procedural Terminology, Fourth Edition (CPT-4), Current Procedural Terminology, Third Edition (CPT-3), Healthcare Common Procedure Coding System, Level II (HCPCS), International Classification of Diseases, Ninth Revision, Clinical Modification (ICD-9-CM), and International Classification of Diseases, Tenth Revision, Procedural Coding System (ICD-10-PCS) Codes Used to Define Endoscopy Procedures in this Request

Code	Description	Code Category	Code Type
45347	Sigmoidoscopy, flexible; with placement of endoscopic stent (includes pre- and post-dilation and guide wire passage, when performed)	Procedure	CPT-4
45349	Sigmoidoscopy, flexible; with endoscopic mucosal resection	Procedure	CPT-4
45350	Sigmoidoscopy, flexible; with band ligation(s) (e.g., hemorrhoids)	Procedure	CPT-4
45355	Colonoscopy, rigid or flexible, transabdominal via colotomy, single or multiple	Procedure	CPT-4
45378	Colonoscopy, flexible; diagnostic, including collection of specimen(s) by brushing or washing, when performed (separate procedure)	Procedure	CPT-4
45379	Colonoscopy, flexible; with removal of foreign body(s)	Procedure	CPT-4
45380	Colonoscopy, flexible; with biopsy, single or multiple	Procedure	CPT-4
45381	Colonoscopy, flexible; with directed submucosal injection(s), any substance	Procedure	CPT-4
45382	Colonoscopy, flexible; with control of bleeding, any method	Procedure	CPT-4
45383	Colonoscopy, flexible, proximal to splenic flexure; with ablation of tumor(s), polyp(s), or other lesion(s) not amenable to removal by hot biopsy forceps, bipolar cautery or snare technique	Procedure	CPT-4
45384	Colonoscopy, flexible; with removal of tumor(s), polyp(s), or other lesion(s) by hot biopsy forceps	Procedure	CPT-4
45385	Colonoscopy, flexible; with removal of tumor(s), polyp(s), or other lesion(s) by snare technique	Procedure	CPT-4
45386	Colonoscopy, flexible; with transendoscopic balloon dilation	Procedure	CPT-4
45387	Colonoscopy, flexible, proximal to splenic flexure; with transendoscopic stent placement (includes predilation)	Procedure	CPT-4
45388	Colonoscopy, flexible; with ablation of tumor(s), polyp(s), or other lesion(s) (includes pre- and post-dilation and guide wire passage, when performed)	Procedure	CPT-4
45389	Colonoscopy, flexible; with endoscopic stent placement (includes pre- and post-dilation and guide wire passage, when performed)	Procedure	CPT-4
45390	Colonoscopy, flexible; with endoscopic mucosal resection	Procedure	CPT-4
45391	Colonoscopy, flexible; with endoscopic ultrasound examination limited to the rectum, sigmoid, descending, transverse, or ascending colon and cecum, and adjacent structures	Procedure	CPT-4
45392	Colonoscopy, flexible; with transendoscopic ultrasound guided intramural or transmural fine needle aspiration/biopsy(s), includes endoscopic ultrasound examination limited to the rectum, sigmoid, descending, transverse, or ascending colon and cecum, and adjacent structures	Procedure	CPT-4
45393	Colonoscopy, flexible; with decompression (for pathologic distention) (e.g., volvulus, megacolon), including placement of decompression tube, when performed	Procedure	CPT-4
45398	Colonoscopy, flexible; with band ligation(s) (e.g., hemorrhoids)	Procedure	CPT-4
91110	Gastrointestinal tract imaging, intraluminal (e.g., capsule endoscopy), esophagus through ileum, with interpretation and report	Procedure	CPT-4
91111	Gastrointestinal tract imaging, intraluminal (e.g., capsule endoscopy), esophagus with interpretation and report	Procedure	CPT-4
91113	Gastrointestinal tract imaging, intraluminal (e.g., capsule endoscopy), colon, with interpretation and report	Procedure	CPT-4
G0104	Colorectal cancer screening; flexible sigmoidoscopy	Procedure	HCPCS

Appendix B. List of Current Procedural Terminology, Fourth Edition (CPT-4), Current Procedural Terminology, Third Edition (CPT-3), Healthcare Common Procedure Coding System, Level II (HCPCS), International Classification of Diseases, Ninth Revision, Clinical Modification (ICD-9-CM), and International Classification of Diseases, Tenth Revision, Procedural Coding System (ICD-10-PCS) Codes Used to Define Endoscopy Procedures in this Request

Code	Description	Code Category	Code Type
G0105	Colorectal cancer screening; colonoscopy on individual at high risk	Procedure	HCPCS
G0106	Colorectal cancer screening; alternative to G0104, screening sigmoidoscopy, barium enema	Procedure	HCPCS
G0120	Colorectal cancer screening; alternative to G0105, screening colonoscopy, barium enema	Procedure	HCPCS
G0121	Colorectal cancer screening; colonoscopy on individual not meeting criteria for high risk	Procedure	HCPCS
G6022	Sigmoidoscopy, flexible; with ablation of tumor(s), polyp(s), or other lesions(s) not amenable to removal by hot biopsy forceps, bipolar cautery or snare technique	Procedure	CPT-4
G6023	Sigmoidoscopy, flexible; with transendoscopic stent placement (includes predilation)	Procedure	CPT-4
G9659	Patients greater than or equal to 86 years of age who underwent a screening colonoscopy and did not have a history of colorectal cancer or other valid medical reason for the colonoscopy, including: iron deficiency anemia, lower gastrointestinal bleeding, Crohn's disease (i.e., regional enteritis), familial adenomatous polyposis, Lynch syndrome (i.e., hereditary nonpolyposis colorectal cancer), inflammatory bowel disease, ulcerative colitis, abnormal finding of gastrointestinal tract, or changes in bowel habits	Procedure	HCPCS
G9660	Documentation of medical reason(s) for a colonoscopy performed on a patient greater than or equal to 86 years of age (e.g., iron deficiency anemia, lower gastrointestinal bleeding, Crohn's disease (i.e., regional enteritis), familial history of adenomatous polyposis, Lynch syndrome (i.e., hereditary nonpolyposis colorectal cancer), inflammatory bowel disease, ulcerative colitis, abnormal finding of gastrointestinal tract, or changes in bowel habits)	Procedure	HCPCS
G9661	Patients greater than or equal to 86 years of age who received a colonoscopy for an assessment of signs/symptoms of GI tract illness, and/or because the patient meets high risk criteria, and/or to follow-up on previously diagnosed advanced lesions	Procedure	HCPCS
G9933	Adenoma(s) or colorectal cancer detected during screening colonoscopy	Procedure	HCPCS
G9935	Adenoma(s) or colorectal cancer not detected during screening colonoscopy	Procedure	HCPCS
G9936	Surveillance colonoscopy - personal history of colonic polyps, colon cancer, or other malignant neoplasm of rectum, rectosigmoid junction, and anus	Procedure	HCPCS
G9937	Diagnostic colonoscopy	Procedure	HCPCS
S0285	Colonoscopy consultation performed prior to a screening colonoscopy procedure	Procedure	HCPCS

Appendix C. List of Current Procedural Terminology, Fourth Edition (CPT-4), Current Procedural Terminology, Third Edition (CPT-3), Healthcare Common Procedure Coding System, Level II (HCPCS), International Classification of Diseases, Ninth Revision, Clinical Modification (ICD-9-CM), and International Classification of Diseases, Tenth Revision, Procedural Coding System (ICD-10-PCS) Codes Used to Define Endoscopy Procedure Incidence

Code	Description	Code Category	Code Type
0355T	Gastrointestinal tract imaging, intraluminal (e.g., capsule endoscopy), colon, with interpretation and report	Procedure	CPT-3
0651T	Magnetically controlled capsule endoscopy, esophagus through stomach, including intraprocedural positioning of capsule, with interpretation and report	Procedure	CPT-3
0D9E3ZX	Drainage of Large Intestine, Percutaneous Approach, Diagnostic	Procedure	ICD-10-PCS
0D9E4ZX	Drainage of Large Intestine, Percutaneous Endoscopic Approach, Diagnostic	Procedure	ICD-10-PCS
0D9E7ZX	Drainage of Large Intestine, Via Natural or Artificial Opening, Diagnostic	Procedure	ICD-10-PCS
0D9E8ZX	Drainage of Large Intestine, Via Natural or Artificial Opening Endoscopic, Diagnostic	Procedure	ICD-10-PCS
0D9F3ZX	Drainage of Right Large Intestine, Percutaneous Approach, Diagnostic	Procedure	ICD-10-PCS
0D9F4ZX	Drainage of Right Large Intestine, Percutaneous Endoscopic Approach, Diagnostic	Procedure	ICD-10-PCS
0D9F7ZX	Drainage of Right Large Intestine, Via Natural or Artificial Opening, Diagnostic	Procedure	ICD-10-PCS
0D9F8ZX	Drainage of Right Large Intestine, Via Natural or Artificial Opening Endoscopic, Diagnostic	Procedure	ICD-10-PCS
0D9G3ZX	Drainage of Left Large Intestine, Percutaneous Approach, Diagnostic	Procedure	ICD-10-PCS
0D9G4ZX	Drainage of Left Large Intestine, Percutaneous Endoscopic Approach, Diagnostic	Procedure	ICD-10-PCS
0D9G7ZX	Drainage of Left Large Intestine, Via Natural or Artificial Opening, Diagnostic	Procedure	ICD-10-PCS
0D9G8ZX	Drainage of Left Large Intestine, Via Natural or Artificial Opening Endoscopic, Diagnostic	Procedure	ICD-10-PCS
0D9H3ZX	Drainage of Cecum, Percutaneous Approach, Diagnostic	Procedure	ICD-10-PCS
0D9H4ZX	Drainage of Cecum, Percutaneous Endoscopic Approach, Diagnostic	Procedure	ICD-10-PCS
0D9H7ZX	Drainage of Cecum, Via Natural or Artificial Opening, Diagnostic	Procedure	ICD-10-PCS
0D9H8ZX	Drainage of Cecum, Via Natural or Artificial Opening Endoscopic, Diagnostic	Procedure	ICD-10-PCS
0D9K3ZX	Drainage of Ascending Colon, Percutaneous Approach, Diagnostic	Procedure	ICD-10-PCS
0D9K4ZX	Drainage of Ascending Colon, Percutaneous Endoscopic Approach, Diagnostic	Procedure	ICD-10-PCS
0D9K7ZX	Drainage of Ascending Colon, Via Natural or Artificial Opening, Diagnostic	Procedure	ICD-10-PCS
0D9K8ZX	Drainage of Ascending Colon, Via Natural or Artificial Opening Endoscopic, Diagnostic	Procedure	ICD-10-PCS
0D9L3ZX	Drainage of Transverse Colon, Percutaneous Approach, Diagnostic	Procedure	ICD-10-PCS
0D9L4ZX	Drainage of Transverse Colon, Percutaneous Endoscopic Approach, Diagnostic	Procedure	ICD-10-PCS
0D9L7ZX	Drainage of Transverse Colon, Via Natural or Artificial Opening, Diagnostic	Procedure	ICD-10-PCS
0D9L8ZX	Drainage of Transverse Colon, Via Natural or Artificial Opening Endoscopic, Diagnostic	Procedure	ICD-10-PCS
0D9M3ZX	Drainage of Descending Colon, Percutaneous Approach, Diagnostic	Procedure	ICD-10-PCS
0D9M4ZX	Drainage of Descending Colon, Percutaneous Endoscopic Approach, Diagnostic	Procedure	ICD-10-PCS
0D9M7ZX	Drainage of Descending Colon, Via Natural or Artificial Opening, Diagnostic	Procedure	ICD-10-PCS
0D9M8ZX	Drainage of Descending Colon, Via Natural or Artificial Opening Endoscopic, Diagnostic	Procedure	ICD-10-PCS
0D9N0ZX	Drainage of Sigmoid Colon, Open Approach, Diagnostic	Procedure	ICD-10-PCS
0D9N3ZX	Drainage of Sigmoid Colon, Percutaneous Approach, Diagnostic	Procedure	ICD-10-PCS
0D9N4ZX	Drainage of Sigmoid Colon, Percutaneous Endoscopic Approach, Diagnostic	Procedure	ICD-10-PCS
0D9N7ZX	Drainage of Sigmoid Colon, Via Natural or Artificial Opening, Diagnostic	Procedure	ICD-10-PCS
0D9N8ZX	Drainage of Sigmoid Colon, Via Natural or Artificial Opening Endoscopic, Diagnostic	Procedure	ICD-10-PCS
0DB80ZX	Excision of Small Intestine, Open Approach, Diagnostic	Procedure	ICD-10-PCS

Appendix C. List of Current Procedural Terminology, Fourth Edition (CPT-4), Current Procedural Terminology, Third Edition (CPT-3), Healthcare Common Procedure Coding System, Level II (HCPCS), International Classification of Diseases, Ninth Revision, Clinical Modification (ICD-9-CM), and International Classification of Diseases, Tenth Revision, Procedural Coding System (ICD-10-PCS) Codes Used to Define Endoscopy Procedure Incidence

Code	Description	Code Category	Code Type
0DB83ZX	Excision of Small Intestine, Percutaneous Approach, Diagnostic	Procedure	ICD-10-PCS
0DB84ZX	Excision of Small Intestine, Percutaneous Endoscopic Approach, Diagnostic	Procedure	ICD-10-PCS
0DB87ZX	Excision of Small Intestine, Via Natural or Artificial Opening, Diagnostic	Procedure	ICD-10-PCS
0DB88ZX	Excision of Small Intestine, Via Natural or Artificial Opening Endoscopic, Diagnostic	Procedure	ICD-10-PCS
0DBE0ZX	Excision of Large Intestine, Open Approach, Diagnostic	Procedure	ICD-10-PCS
0DBE3ZX	Excision of Large Intestine, Percutaneous Approach, Diagnostic	Procedure	ICD-10-PCS
0DBE4ZX	Excision of Large Intestine, Percutaneous Endoscopic Approach, Diagnostic	Procedure	ICD-10-PCS
0DBE7ZX	Excision of Large Intestine, Via Natural or Artificial Opening, Diagnostic	Procedure	ICD-10-PCS
0DBE8ZX	Excision of Large Intestine, Via Natural or Artificial Opening Endoscopic, Diagnostic	Procedure	ICD-10-PCS
0DBF3ZX	Excision of Right Large Intestine, Percutaneous Approach, Diagnostic	Procedure	ICD-10-PCS
0DBF4ZX	Excision of Right Large Intestine, Percutaneous Endoscopic Approach, Diagnostic	Procedure	ICD-10-PCS
0DBF7ZX	Excision of Right Large Intestine, Via Natural or Artificial Opening, Diagnostic	Procedure	ICD-10-PCS
0DBF8ZX	Excision of Right Large Intestine, Via Natural or Artificial Opening Endoscopic, Diagnostic	Procedure	ICD-10-PCS
0DBG3ZX	Excision of Left Large Intestine, Percutaneous Approach, Diagnostic	Procedure	ICD-10-PCS
0DBG4ZX	Excision of Left Large Intestine, Percutaneous Endoscopic Approach, Diagnostic	Procedure	ICD-10-PCS
0DBG7ZX	Excision of Left Large Intestine, Via Natural or Artificial Opening, Diagnostic	Procedure	ICD-10-PCS
0DBG8ZX	Excision of Left Large Intestine, Via Natural or Artificial Opening Endoscopic, Diagnostic	Procedure	ICD-10-PCS
0DBH3ZX	Excision of Cecum, Percutaneous Approach, Diagnostic	Procedure	ICD-10-PCS
0DBH4ZX	Excision of Cecum, Percutaneous Endoscopic Approach, Diagnostic	Procedure	ICD-10-PCS
0DBH7ZX	Excision of Cecum, Via Natural or Artificial Opening, Diagnostic	Procedure	ICD-10-PCS
0DBH8ZX	Excision of Cecum, Via Natural or Artificial Opening Endoscopic, Diagnostic	Procedure	ICD-10-PCS
0DBK3ZX	Excision of Ascending Colon, Percutaneous Approach, Diagnostic	Procedure	ICD-10-PCS
0DBK4ZX	Excision of Ascending Colon, Percutaneous Endoscopic Approach, Diagnostic	Procedure	ICD-10-PCS
0DBK7ZX	Excision of Ascending Colon, Via Natural or Artificial Opening, Diagnostic	Procedure	ICD-10-PCS
0DBK8ZX	Excision of Ascending Colon, Via Natural or Artificial Opening Endoscopic, Diagnostic	Procedure	ICD-10-PCS
0DBL3ZX	Excision of Transverse Colon, Percutaneous Approach, Diagnostic	Procedure	ICD-10-PCS
0DBL4ZX	Excision of Transverse Colon, Percutaneous Endoscopic Approach, Diagnostic	Procedure	ICD-10-PCS
0DBL7ZX	Excision of Transverse Colon, Via Natural or Artificial Opening, Diagnostic	Procedure	ICD-10-PCS
0DBL8ZX	Excision of Transverse Colon, Via Natural or Artificial Opening Endoscopic, Diagnostic	Procedure	ICD-10-PCS
0DBM3ZX	Excision of Descending Colon, Percutaneous Approach, Diagnostic	Procedure	ICD-10-PCS
0DBM4ZX	Excision of Descending Colon, Percutaneous Endoscopic Approach, Diagnostic	Procedure	ICD-10-PCS
0DBM7ZX	Excision of Descending Colon, Via Natural or Artificial Opening, Diagnostic	Procedure	ICD-10-PCS
0DBM8ZX	Excision of Descending Colon, Via Natural or Artificial Opening Endoscopic, Diagnostic	Procedure	ICD-10-PCS
0DBN0ZX	Excision of Sigmoid Colon, Open Approach, Diagnostic	Procedure	ICD-10-PCS
0DBN3ZX	Excision of Sigmoid Colon, Percutaneous Approach, Diagnostic	Procedure	ICD-10-PCS
0DBN4ZX	Excision of Sigmoid Colon, Percutaneous Endoscopic Approach, Diagnostic	Procedure	ICD-10-PCS
0DBN7ZX	Excision of Sigmoid Colon, Via Natural or Artificial Opening, Diagnostic	Procedure	ICD-10-PCS
0DBN8ZX	Excision of Sigmoid Colon, Via Natural or Artificial Opening Endoscopic, Diagnostic	Procedure	ICD-10-PCS
0DD83ZX	Extraction of Small Intestine, Percutaneous Approach, Diagnostic	Procedure	ICD-10-PCS

Appendix C. List of Current Procedural Terminology, Fourth Edition (CPT-4), Current Procedural Terminology, Third Edition (CPT-3), Healthcare Common Procedure Coding System, Level II (HCPCS), International Classification of Diseases, Ninth Revision, Clinical Modification (ICD-9-CM), and International Classification of Diseases, Tenth Revision, Procedural Coding System (ICD-10-PCS) Codes Used to Define Endoscopy Procedure Incidence

Code	Description	Code Category	Code Type
0DD84ZX	Extraction of Small Intestine, Percutaneous Endoscopic Approach, Diagnostic	Procedure	ICD-10-PCS
0DD88ZX	Extraction of Small Intestine, Via Natural or Artificial Opening Endoscopic, Diagnostic	Procedure	ICD-10-PCS
0DDE3ZX	Extraction of Large Intestine, Percutaneous Approach, Diagnostic	Procedure	ICD-10-PCS
0DDE4ZX	Extraction of Large Intestine, Percutaneous Endoscopic Approach, Diagnostic	Procedure	ICD-10-PCS
0DDE8ZX	Extraction of Large Intestine, Via Natural or Artificial Opening Endoscopic, Diagnostic	Procedure	ICD-10-PCS
0DDF3ZX	Extraction of Right Large Intestine, Percutaneous Approach, Diagnostic	Procedure	ICD-10-PCS
0DDF4ZX	Extraction of Right Large Intestine, Percutaneous Endoscopic Approach, Diagnostic	Procedure	ICD-10-PCS
0DDF8ZX	Extraction of Right Large Intestine, Via Natural or Artificial Opening Endoscopic, Diagnostic	Procedure	ICD-10-PCS
0DDG	Extraction / Large Intestine, Left	Procedure	ICD-10-PCS
0DDG3ZX	Extraction of Left Large Intestine, Percutaneous Approach, Diagnostic	Procedure	ICD-10-PCS
0DDG4ZX	Extraction of Left Large Intestine, Percutaneous Endoscopic Approach, Diagnostic	Procedure	ICD-10-PCS
0DDG8ZX	Extraction of Left Large Intestine, Via Natural or Artificial Opening Endoscopic, Diagnostic	Procedure	ICD-10-PCS
0DDH3ZX	Extraction of Cecum, Percutaneous Approach, Diagnostic	Procedure	ICD-10-PCS
0DDH4ZX	Extraction of Cecum, Percutaneous Endoscopic Approach, Diagnostic	Procedure	ICD-10-PCS
0DDH8ZX	Extraction of Cecum, Via Natural or Artificial Opening Endoscopic, Diagnostic	Procedure	ICD-10-PCS
0DDK3ZX	Extraction of Ascending Colon, Percutaneous Approach, Diagnostic	Procedure	ICD-10-PCS
0DDK4ZX	Extraction of Ascending Colon, Percutaneous Endoscopic Approach, Diagnostic	Procedure	ICD-10-PCS
0DDK8ZX	Extraction of Ascending Colon, Via Natural or Artificial Opening Endoscopic, Diagnostic	Procedure	ICD-10-PCS
0DDL3ZX	Extraction of Transverse Colon, Percutaneous Approach, Diagnostic	Procedure	ICD-10-PCS
0DDL4ZX	Extraction of Transverse Colon, Percutaneous Endoscopic Approach, Diagnostic	Procedure	ICD-10-PCS
0DDL8ZX	Extraction of Transverse Colon, Via Natural or Artificial Opening Endoscopic, Diagnostic	Procedure	ICD-10-PCS
0DDM3ZX	Extraction of Descending Colon, Percutaneous Approach, Diagnostic	Procedure	ICD-10-PCS
0DDM4ZX	Extraction of Descending Colon, Percutaneous Endoscopic Approach, Diagnostic	Procedure	ICD-10-PCS
0DDM8ZX	Extraction of Descending Colon, Via Natural or Artificial Opening Endoscopic, Diagnostic	Procedure	ICD-10-PCS
0DDN3ZX	Extraction of Sigmoid Colon, Percutaneous Approach, Diagnostic	Procedure	ICD-10-PCS
0DDN4ZX	Extraction of Sigmoid Colon, Percutaneous Endoscopic Approach, Diagnostic	Procedure	ICD-10-PCS
0DDN8ZX	Extraction of Sigmoid Colon, Via Natural or Artificial Opening Endoscopic, Diagnostic	Procedure	ICD-10-PCS
0DDP3ZX	Extraction of Rectum, Percutaneous Approach, Diagnostic	Procedure	ICD-10-PCS
0DDP4ZX	Extraction of Rectum, Percutaneous Endoscopic Approach, Diagnostic	Procedure	ICD-10-PCS
0DDP8ZX	Extraction of Rectum, Via Natural or Artificial Opening Endoscopic, Diagnostic	Procedure	ICD-10-PCS
0DDQ3ZX	Extraction of Anus, Percutaneous Approach, Diagnostic	Procedure	ICD-10-PCS
0DDQ4ZX	Extraction of Anus, Percutaneous Endoscopic Approach, Diagnostic	Procedure	ICD-10-PCS
0DDQ8ZX	Extraction of Anus, Via Natural or Artificial Opening Endoscopic, Diagnostic	Procedure	ICD-10-PCS
0DDQXZX	Extraction of Anus, External Approach, Diagnostic	Procedure	ICD-10-PCS
0DJ00ZZ	Inspection of Upper Intestinal Tract, Open Approach	Procedure	ICD-10-PCS
0DJ03ZZ	Inspection of Upper Intestinal Tract, Percutaneous Approach	Procedure	ICD-10-PCS
0DJ04ZZ	Inspection of Upper Intestinal Tract, Percutaneous Endoscopic Approach	Procedure	ICD-10-PCS

Appendix C. List of Current Procedural Terminology, Fourth Edition (CPT-4), Current Procedural Terminology, Third Edition (CPT-3), Healthcare Common Procedure Coding System, Level II (HCPCS), International Classification of Diseases, Ninth Revision, Clinical Modification (ICD-9-CM), and International Classification of Diseases, Tenth Revision, Procedural Coding System (ICD-10-PCS) Codes Used to Define Endoscopy Procedure Incidence

Code	Description	Code Category	Code Type
0DJ07ZZ	Inspection of Upper Intestinal Tract, Via Natural or Artificial Opening	Procedure	ICD-10-PCS
0DJ08ZZ	Inspection of Upper Intestinal Tract, Via Natural or Artificial Opening Endoscopic	Procedure	ICD-10-PCS
0DJ0XZZ	Inspection of Upper Intestinal Tract, External Approach	Procedure	ICD-10-PCS
0DJD3ZZ	Inspection of Lower Intestinal Tract, Percutaneous Approach	Procedure	ICD-10-PCS
0DJD7ZZ	Inspection of Lower Intestinal Tract, Via Natural or Artificial Opening	Procedure	ICD-10-PCS
0DJD8ZZ	Inspection of Lower Intestinal Tract, Via Natural or Artificial Opening Endoscopic	Procedure	ICD-10-PCS
42.22	Esophagoscopy through artificial stoma	Procedure	ICD-9-CM
42.23	Other esophagoscopy	Procedure	ICD-9-CM
42.24	Closed (endoscopic) biopsy of esophagus	Procedure	ICD-9-CM
43200	Esophagoscopy, flexible, transoral; diagnostic, including collection of specimen(s) by brushing or washing, when performed (separate procedure)	Procedure	CPT-4
43235	Esophagogastroduodenoscopy, flexible, transoral; diagnostic, including collection of specimen(s) by brushing or washing, when performed (separate procedure)	Procedure	CPT-4
44.14	Closed [endoscopic] biopsy of stomach	Procedure	ICD-9-CM
44360	Small intestinal endoscopy, enteroscopy beyond second portion of duodenum, not including ileum; diagnostic, including collection of specimen(s) by brushing or washing, when performed (separate procedure)	Procedure	CPT-4
44361	Small intestinal endoscopy, enteroscopy beyond second portion of duodenum, not including ileum; with biopsy, single or multiple	Procedure	CPT-4
44363	Small intestinal endoscopy, enteroscopy beyond second portion of duodenum, not including ileum; with removal of foreign body(s)	Procedure	CPT-4
44364	Small intestinal endoscopy, enteroscopy beyond second portion of duodenum, not including ileum; with removal of tumor(s), polyp(s), or other lesion(s) by snare technique	Procedure	CPT-4
44365	Small intestinal endoscopy, enteroscopy beyond second portion of duodenum, not including ileum; with removal of tumor(s), polyp(s), or other lesion(s) by hot biopsy forceps or bipolar cautery	Procedure	CPT-4
44366	Small intestinal endoscopy, enteroscopy beyond second portion of duodenum, not including ileum; with control of bleeding (e.g., injection, bipolar cautery, unipolar cautery, laser, heater probe, stapler, plasma coagulator)	Procedure	CPT-4
44369	Small intestinal endoscopy, enteroscopy beyond second portion of duodenum, not including ileum; with ablation of tumor(s), polyp(s), or other lesion(s) not amenable to removal by hot biopsy forceps, bipolar cautery or snare technique	Procedure	CPT-4
44370	Small intestinal endoscopy, enteroscopy beyond second portion of duodenum, not including ileum; with transendoscopic stent placement (includes predilation)	Procedure	CPT-4
44372	Small intestinal endoscopy, enteroscopy beyond second portion of duodenum, not including ileum; with placement of percutaneous jejunostomy tube	Procedure	CPT-4
44373	Small intestinal endoscopy, enteroscopy beyond second portion of duodenum, not including ileum; with conversion of percutaneous gastrostomy tube to percutaneous jejunostomy tube	Procedure	CPT-4
44376	Small intestinal endoscopy, enteroscopy beyond second portion of duodenum, including ileum; diagnostic, with or without collection of specimen(s) by brushing or washing (separate procedure)	Procedure	CPT-4
44377	Small intestinal endoscopy, enteroscopy beyond second portion of duodenum, including ileum; with biopsy, single or multiple	Procedure	CPT-4

Appendix C. List of Current Procedural Terminology, Fourth Edition (CPT-4), Current Procedural Terminology, Third Edition (CPT-3), Healthcare Common Procedure Coding System, Level II (HCPCS), International Classification of Diseases, Ninth Revision, Clinical Modification (ICD-9-CM), and International Classification of Diseases, Tenth Revision, Procedural Coding System (ICD-10-PCS) Codes Used to Define Endoscopy Procedure Incidence

Code	Description	Code Category	Code Type
44378	Small intestinal endoscopy, enteroscopy beyond second portion of duodenum, including ileum; with control of bleeding (e.g., injection, bipolar cautery, unipolar cautery, laser, heater probe, stapler, plasma coagulator)	Procedure	CPT-4
44379	Small intestinal endoscopy, enteroscopy beyond second portion of duodenum, including ileum; with transendoscopic stent placement (includes predilation)	Procedure	CPT-4
44388	Colonoscopy through stoma; diagnostic, including collection of specimen(s) by brushing or washing, when performed (separate procedure)	Procedure	CPT-4
44389	Colonoscopy through stoma; with biopsy, single or multiple	Procedure	CPT-4
44390	Colonoscopy through stoma; with removal of foreign body(s)	Procedure	CPT-4
44391	Colonoscopy through stoma; with control of bleeding, any method	Procedure	CPT-4
44392	Colonoscopy through stoma; with removal of tumor(s), polyp(s), or other lesion(s) by hot biopsy forceps	Procedure	CPT-4
44393	Colonoscopy through stoma; with ablation of tumor(s), polyp(s), or other lesion(s) not amenable to removal by hot biopsy forceps, bipolar cautery or snare technique	Procedure	CPT-4
44394	Colonoscopy through stoma; with removal of tumor(s), polyp(s), or other lesion(s) by snare technique	Procedure	CPT-4
44397	Colonoscopy through stoma; with transendoscopic stent placement (includes predilation)	Procedure	CPT-4
44401	Colonoscopy through stoma; with ablation of tumor(s), polyp(s), or other lesion(s) (includes pre- and post-dilation and guide wire passage, when performed)	Procedure	CPT-4
44402	Colonoscopy through stoma; with endoscopic stent placement (including pre- and post-dilation and guide wire passage, when performed)	Procedure	CPT-4
44403	Colonoscopy through stoma; with endoscopic mucosal resection	Procedure	CPT-4
44404	Colonoscopy through stoma; with directed submucosal injection(s), any substance	Procedure	CPT-4
44405	Colonoscopy through stoma; with transendoscopic balloon dilation	Procedure	CPT-4
44406	Colonoscopy through stoma; with endoscopic ultrasound examination, limited to the sigmoid, descending, transverse, or ascending colon and cecum and adjacent structures	Procedure	CPT-4
44407	Colonoscopy through stoma; with transendoscopic ultrasound guided intramural or transmural fine needle aspiration/biopsy(s), includes endoscopic ultrasound examination limited to the sigmoid, descending, transverse, or ascending colon and cecum and adjacent structures	Procedure	CPT-4
44408	Colonoscopy through stoma; with decompression (for pathologic distention) (e.g., volvulus, megacolon), including placement of decompression tube, when performed	Procedure	CPT-4
45.11	Transabdominal endoscopy of small intestine	Procedure	ICD-9-CM
45.13	Other endoscopy of small intestine	Procedure	ICD-9-CM
45.14	Closed [endoscopic] biopsy of small intestine	Procedure	ICD-9-CM
45.16	Esophagogastroduodenoscopy (EGD) with closed biopsy	Procedure	ICD-9-CM
45.19	Other diagnostic procedures on small intestine	Procedure	ICD-9-CM
45.21	Transabdominal endoscopy of large intestine	Procedure	ICD-9-CM
45.22	Endoscopy of large intestine through artificial stoma	Procedure	ICD-9-CM
45.23	Colonoscopy	Procedure	ICD-9-CM
45.24	Flexible sigmoidoscopy	Procedure	ICD-9-CM
45.25	Closed [endoscopic] biopsy of large intestine	Procedure	ICD-9-CM
45.27	Intestinal biopsy, site unspecified	Procedure	ICD-9-CM

Appendix C. List of Current Procedural Terminology, Fourth Edition (CPT-4), Current Procedural Terminology, Third Edition (CPT-3), Healthcare Common Procedure Coding System, Level II (HCPCS), International Classification of Diseases, Ninth Revision, Clinical Modification (ICD-9-CM), and International Classification of Diseases, Tenth Revision, Procedural Coding System (ICD-10-PCS) Codes Used to Define Endoscopy Procedure Incidence

Code	Description	Code Category	Code Type
45300	Proctosigmoidoscopy, rigid; diagnostic, with or without collection of specimen(s) by brushing or washing (separate procedure)	Procedure	CPT-4
45302	PROCTOSIGMOIDOSCOPY; COLLECT SPECIMEN BRUSH/WASH	Procedure	CPT-4
45303	Proctosigmoidoscopy, rigid; with dilation (e.g., balloon, guide wire, bougie)	Procedure	CPT-4
45305	Proctosigmoidoscopy, rigid; with biopsy, single or multiple	Procedure	CPT-4
45307	Proctosigmoidoscopy, rigid; with removal of foreign body	Procedure	CPT-4
45308	Proctosigmoidoscopy, rigid; with removal of single tumor, polyp, or other lesion by hot biopsy forceps or bipolar cautery	Procedure	CPT-4
45309	Proctosigmoidoscopy, rigid; with removal of single tumor, polyp, or other lesion by snare technique	Procedure	CPT-4
45310	PROCTOSIGMOIDOSCOPY; REMOVAL POLYP/PAPILLOMA	Procedure	CPT-4
45315	Proctosigmoidoscopy, rigid; with removal of multiple tumors, polyps, or other lesions by hot biopsy forceps, bipolar cautery or snare technique	Procedure	CPT-4
45317	Proctosigmoidoscopy, rigid; with control of bleeding (e.g., injection, bipolar cautery, unipolar cautery, laser, heater probe, stapler, plasma coagulator)	Procedure	CPT-4
45320	Proctosigmoidoscopy, rigid; with ablation of tumor(s), polyp(s), or other lesion(s) not amenable to removal by hot biopsy forceps, bipolar cautery or snare technique (e.g., laser)	Procedure	CPT-4
45321	Proctosigmoidoscopy, rigid; with decompression of volvulus	Procedure	CPT-4
45327	Proctosigmoidoscopy, rigid; with transendoscopic stent placement (includes predilation)	Procedure	CPT-4
45330	Sigmoidoscopy, flexible; diagnostic, including collection of specimen(s) by brushing or washing, when performed (separate procedure)	Procedure	CPT-4
45331	Sigmoidoscopy, flexible; with biopsy, single or multiple	Procedure	CPT-4
45332	Sigmoidoscopy, flexible; with removal of foreign body(s)	Procedure	CPT-4
45333	Sigmoidoscopy, flexible; with removal of tumor(s), polyp(s), or other lesion(s) by hot biopsy forceps	Procedure	CPT-4
45334	Sigmoidoscopy, flexible; with control of bleeding, any method	Procedure	CPT-4
45335	Sigmoidoscopy, flexible; with directed submucosal injection(s), any substance	Procedure	CPT-4
45336	SIGMOIDOSCOPY; ABLATE TUMOR MUCOSAL LESION	Procedure	CPT-4
45337	Sigmoidoscopy, flexible; with decompression (for pathologic distention) (e.g., volvulus, megacolon), including placement of decompression tube, when performed	Procedure	CPT-4
45338	Sigmoidoscopy, flexible; with removal of tumor(s), polyp(s), or other lesion(s) by snare technique	Procedure	CPT-4
45339	Sigmoidoscopy, flexible; with ablation of tumor(s), polyp(s), or other lesion(s) not amenable to removal by hot biopsy forceps, bipolar cautery or snare technique	Procedure	CPT-4
45340	Sigmoidoscopy, flexible; with transendoscopic balloon dilation	Procedure	CPT-4
45341	Sigmoidoscopy, flexible; with endoscopic ultrasound examination	Procedure	CPT-4
45342	Sigmoidoscopy, flexible; with transendoscopic ultrasound guided intramural or transmural fine needle aspiration/biopsy(s)	Procedure	CPT-4
45345	Sigmoidoscopy, flexible; with transendoscopic stent placement (includes predilation)	Procedure	CPT-4
45346	Sigmoidoscopy, flexible; with ablation of tumor(s), polyp(s), or other lesion(s) (includes pre- and post-dilation and guide wire passage, when performed)	Procedure	CPT-4

Appendix C. List of Current Procedural Terminology, Fourth Edition (CPT-4), Current Procedural Terminology, Third Edition (CPT-3), Healthcare Common Procedure Coding System, Level II (HCPCS), International Classification of Diseases, Ninth Revision, Clinical Modification (ICD-9-CM), and International Classification of Diseases, Tenth Revision, Procedural Coding System (ICD-10-PCS) Codes Used to Define Endoscopy Procedure Incidence

Code	Description	Code Category	Code Type
45347	Sigmoidoscopy, flexible; with placement of endoscopic stent (includes pre- and post-dilation and guide wire passage, when performed)	Procedure	CPT-4
45349	Sigmoidoscopy, flexible; with endoscopic mucosal resection	Procedure	CPT-4
45350	Sigmoidoscopy, flexible; with band ligation(s) (e.g., hemorrhoids)	Procedure	CPT-4
45355	Colonoscopy, rigid or flexible, transabdominal via colotomy, single or multiple	Procedure	CPT-4
45378	Colonoscopy, flexible; diagnostic, including collection of specimen(s) by brushing or washing, when performed (separate procedure)	Procedure	CPT-4
45379	Colonoscopy, flexible; with removal of foreign body(s)	Procedure	CPT-4
45380	Colonoscopy, flexible; with biopsy, single or multiple	Procedure	CPT-4
45381	Colonoscopy, flexible; with directed submucosal injection(s), any substance	Procedure	CPT-4
45382	Colonoscopy, flexible; with control of bleeding, any method	Procedure	CPT-4
45383	Colonoscopy, flexible, proximal to splenic flexure; with ablation of tumor(s), polyp(s), or other lesion(s) not amenable to removal by hot biopsy forceps, bipolar cautery or snare technique	Procedure	CPT-4
45384	Colonoscopy, flexible; with removal of tumor(s), polyp(s), or other lesion(s) by hot biopsy forceps	Procedure	CPT-4
45385	Colonoscopy, flexible; with removal of tumor(s), polyp(s), or other lesion(s) by snare technique	Procedure	CPT-4
45386	Colonoscopy, flexible; with transendoscopic balloon dilation	Procedure	CPT-4
45387	Colonoscopy, flexible, proximal to splenic flexure; with transendoscopic stent placement (includes predilation)	Procedure	CPT-4
45388	Colonoscopy, flexible; with ablation of tumor(s), polyp(s), or other lesion(s) (includes pre- and post-dilation and guide wire passage, when performed)	Procedure	CPT-4
45389	Colonoscopy, flexible; with endoscopic stent placement (includes pre- and post-dilation and guide wire passage, when performed)	Procedure	CPT-4
45390	Colonoscopy, flexible; with endoscopic mucosal resection	Procedure	CPT-4
45391	Colonoscopy, flexible; with endoscopic ultrasound examination limited to the rectum, sigmoid, descending, transverse, or ascending colon and cecum, and adjacent structures	Procedure	CPT-4
45392	Colonoscopy, flexible; with transendoscopic ultrasound guided intramural or transmural fine needle aspiration/biopsy(s), includes endoscopic ultrasound examination limited to the rectum, sigmoid, descending, transverse, or ascending colon and cecum, and adjacent structures	Procedure	CPT-4
45393	Colonoscopy, flexible; with decompression (for pathologic distention) (e.g., volvulus, megacolon), including placement of decompression tube, when performed	Procedure	CPT-4
45398	Colonoscopy, flexible; with band ligation(s) (e.g., hemorrhoids)	Procedure	CPT-4
48.21	Transabdominal proctosigmoidoscopy	Procedure	ICD-9-CM
48.22	Proctosigmoidoscopy through artificial stoma	Procedure	ICD-9-CM
48.23	Rigid proctosigmoidoscopy	Procedure	ICD-9-CM
49.21	Anoscopy	Procedure	ICD-9-CM
91110	Gastrointestinal tract imaging, intraluminal (e.g., capsule endoscopy), esophagus through ileum, with interpretation and report	Procedure	CPT-4
91111	Gastrointestinal tract imaging, intraluminal (e.g., capsule endoscopy), esophagus with interpretation and report	Procedure	CPT-4

Appendix C. List of Current Procedural Terminology, Fourth Edition (CPT-4), Current Procedural Terminology, Third Edition (CPT-3), Healthcare Common Procedure Coding System, Level II (HCPCS), International Classification of Diseases, Ninth Revision, Clinical Modification (ICD-9-CM), and International Classification of Diseases, Tenth Revision, Procedural Coding System (ICD-10-PCS) Codes Used to Define Endoscopy Procedure Incidence

Code	Description	Code Category	Code Type
91113	Gastrointestinal tract imaging, intraluminal (e.g., capsule endoscopy), colon, with interpretation and report	Procedure	CPT-4
G0104	Colorectal cancer screening; flexible sigmoidoscopy	Procedure	HCPCS
G0105	Colorectal cancer screening; colonoscopy on individual at high risk	Procedure	HCPCS
G0106	Colorectal cancer screening; alternative to G0104, screening sigmoidoscopy, barium enema	Procedure	HCPCS
G0120	Colorectal cancer screening; alternative to G0105, screening colonoscopy, barium enema	Procedure	HCPCS
G0121	Colorectal cancer screening; colonoscopy on individual not meeting criteria for high risk	Procedure	HCPCS
G6022	Sigmoidoscopy, flexible; with ablation of tumor(s), polyp(s), or other lesions(s) not amenable to removal by hot biopsy forceps, bipolar cautery or snare technique	Procedure	CPT-4
G6023	Sigmoidoscopy, flexible; with transendoscopic stent placement (includes predilation)	Procedure	CPT-4
G9659	Patients greater than or equal to 86 years of age who underwent a screening colonoscopy and did not have a history of colorectal cancer or other valid medical reason for the colonoscopy, including: iron deficiency anemia, lower gastrointestinal bleeding, Crohn's disease (i.e., regional enteritis), familial adenomatous polyposis, Lynch syndrome (i.e., hereditary nonpolyposis colorectal cancer), inflammatory bowel disease, ulcerative colitis, abnormal finding of gastrointestinal tract, or changes in bowel habits	Procedure	HCPCS
G9660	Documentation of medical reason(s) for a colonoscopy performed on a patient greater than or equal to 86 years of age (e.g., iron deficiency anemia, lower gastrointestinal bleeding, Crohn's disease (i.e., regional enteritis), familial history of adenomatous polyposis, Lynch syndrome (i.e., hereditary nonpolyposis colorectal cancer), inflammatory bowel disease, ulcerative colitis, abnormal finding of gastrointestinal tract, or changes in bowel habits)	Procedure	HCPCS
G9661	Patients greater than or equal to 86 years of age who received a colonoscopy for an assessment of signs/symptoms of GI tract illness, and/or because the patient meets high risk criteria, and/or to follow-up on previously diagnosed advanced lesions	Procedure	HCPCS
G9933	Adenoma(s) or colorectal cancer detected during screening colonoscopy	Procedure	HCPCS
G9935	Adenoma(s) or colorectal cancer not detected during screening colonoscopy	Procedure	HCPCS
G9936	Surveillance colonoscopy - personal history of colonic polyps, colon cancer, or other malignant neoplasm of rectum, rectosigmoid junction, and anus	Procedure	HCPCS
G9937	Diagnostic colonoscopy	Procedure	HCPCS
S0285	Colonoscopy consultation performed prior to a screening colonoscopy procedure	Procedure	HCPCS

Appendix D. Specifications of the Study Design and Parameters Used in this Request

Sentinel's Cohort Identification and Descriptive Analysis (CIDA) tool will be used to compare the frequency of diagnoses for a selection of health outcomes using ICD-9 versus ICD-10 codes

Coverage requirement: At least medical coverage

Enrollment gap: 45 Days

Enrollment Requirement: (See below)

Age groups: 0-106

Stratifications: (See below)

Exposure/Event

Scenario	Group	Event	Enrollment Requirement	Stratifications	Query Period Start	Query Period End	Monitoring File/Run #	Event Code Type	Incident Code Type	Cohort definition	Washout period	Care setting
1	EP_9_yr1	Endoscopy Procedure	183	None	10/1/2013	9/30/2014	1	ICD-9-CM, HCPCS/CPT	ICD-9-CM, HCPCS/CPT	02	183	Any care setting
2	EP_9_yr2	Endoscopy Procedure	183	None	10/1/2014	9/30/2015	2	ICD-9-CM, HCPCS/CPT	ICD-9-CM, HCPCS/CPT	02	183	Any care setting
3	EP_10_yr1	Endoscopy Procedure	183	None	10/1/2015	9/30/2016	3	ICD-10-CM, HCPCS/CPT	ICD-10-CM, HCPCS/CPT	02	183	Any care setting
4	EP_10_yr2	Endoscopy Procedure	183	None	10/1/2016	9/30/2017	4	ICD-10-CM, HCPCS/CPT	ICD-10-CM, HCPCS/CPT	02	183	Any care setting
5	EP_9_inc	Endoscopy Procedure	183	Year*Month	10/1/2010	12/31/2022	5	ICD-9-CM, HCPCS/CPT	ICD-9-CM, ICD-10-CM, HCPCS/CPT	02	183	Any care setting
6	EP_10_inc	Endoscopy Procedure	183	Year*Month	10/1/2010	12/31/2022	5	ICD-10-CM, HCPCS/CPT	ICD-9-CM, ICD-10-CM, HCPCS/CPT	02	183	Any care setting
7	EP_9_prev	Endoscopy Procedure	0	Year*Month	10/1/2010	12/31/2022	5	ICD-9-CM, HCPCS/CPT	N/A	02	0	Any care setting
8	EP_10_prev	Endoscopy Procedure	0	Year*Month	10/1/2010	12/31/2022	5	ICD-10-CM, HCPCS/CPT	N/A	02	0	Any care setting

ICD-9-CM and ICD-10-CM are provided by FDA. ICD-10-CM codes were mapped from ICD-9-CM codes and ICD-9-CM codes were mapped from ICD-10-CM. ☒

ICD-9, ICD-10, HCPCS, and CPT codes are provided by FDA.

NDC codes are checked against First Data Bank's FDB MedKnowledge®.